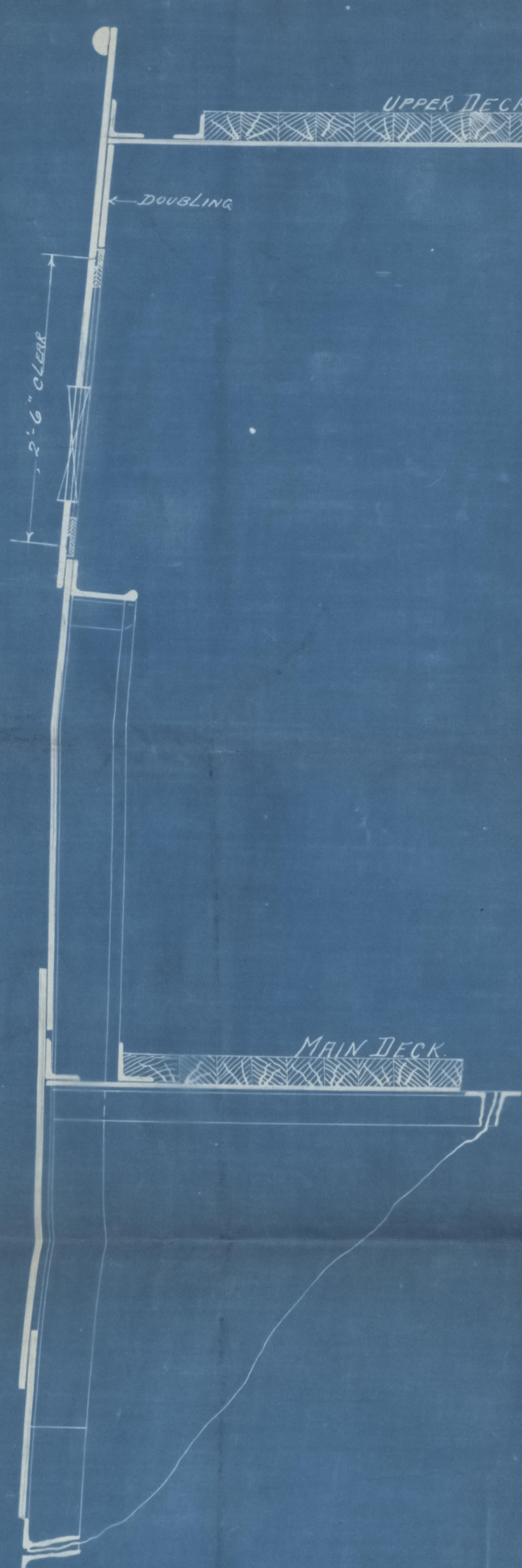
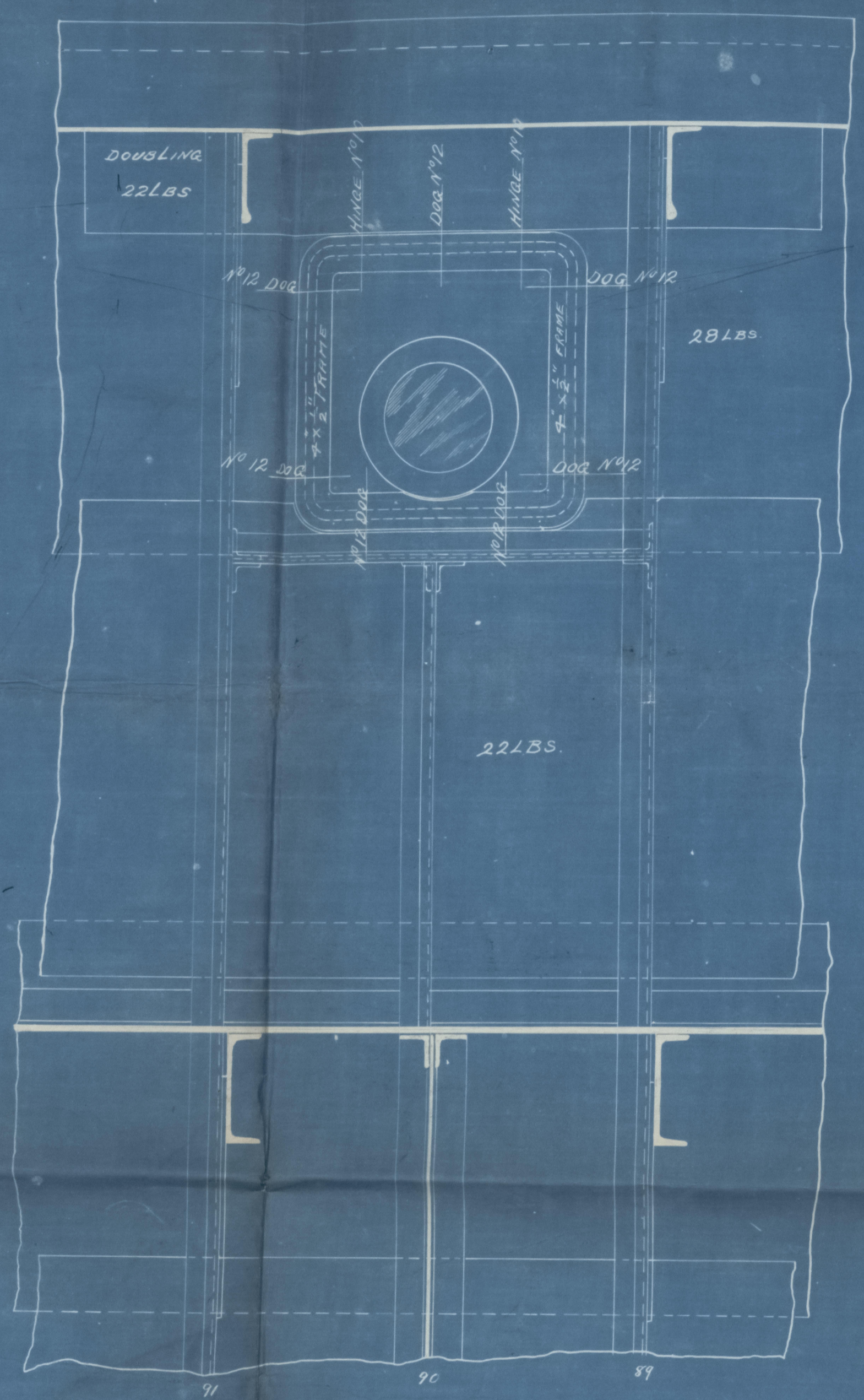
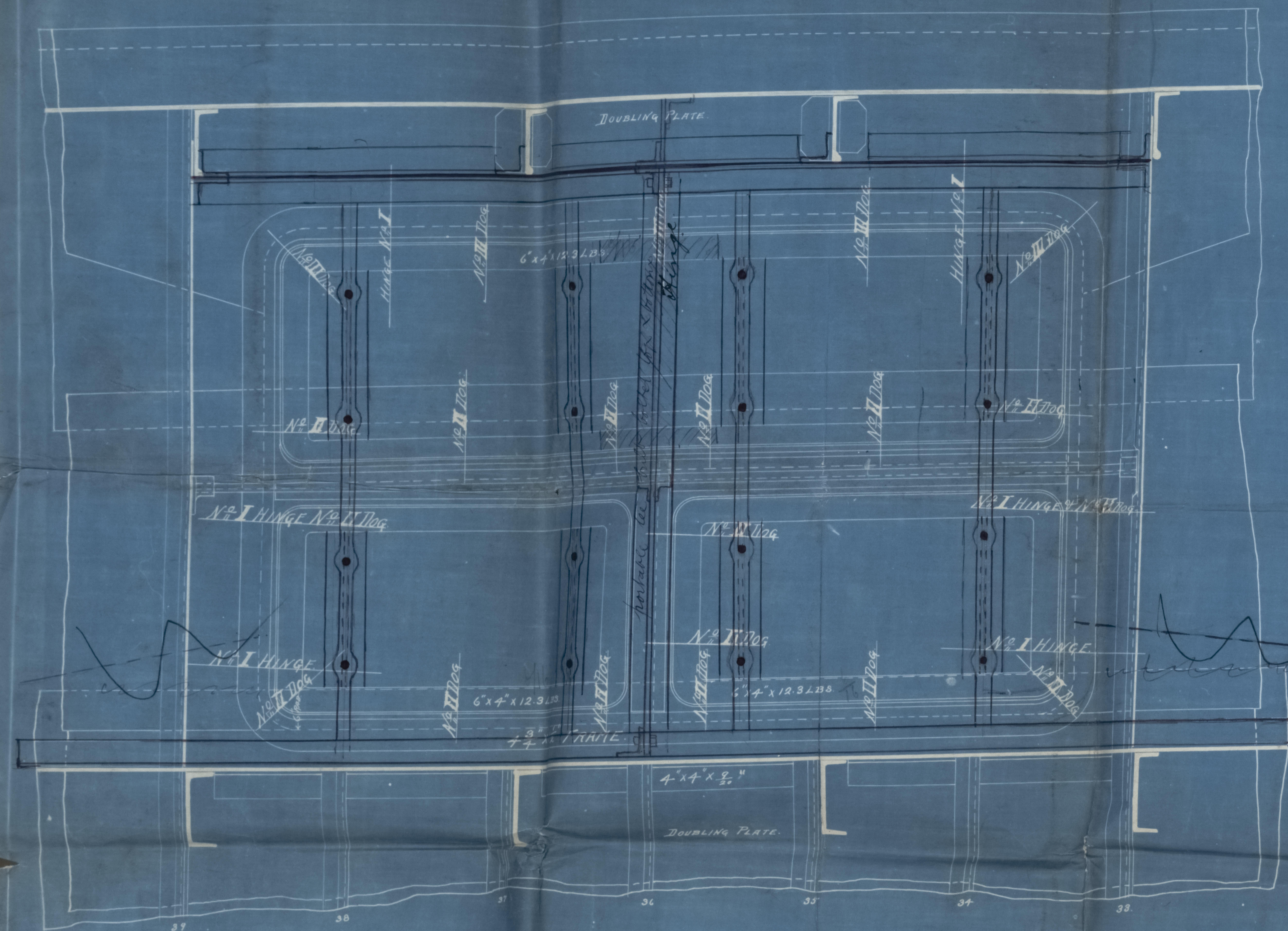


9-12-99



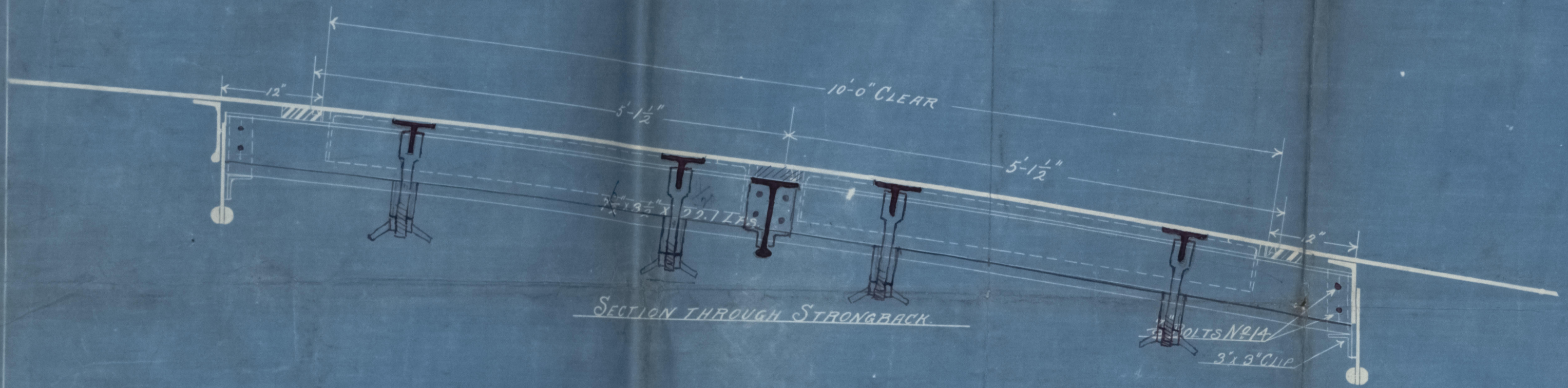
CASTINGS FOR ONE SHIP

NO	QTY	DESCRIPTION	DWG. NO.	MATERIAL	REMARKS	EXTD. ORDER	DATE
7	16	DOOR BOLTS					
8	60						
9	8						
10	4	HINGES	SB-100				
11	18	WHEELS	678				
12	18	DOOR	509				
13	14	DOOR BOLTS					
14	16	BOLTS					

CASTINGS FOR ONE SHIP

NUMBER	QTY	DESCRIPTION	MATERIAL	REMARKS	EXTD. ORDER	DATE
I	24	HINGES	CAST STEEL OR PATENT			
II	64	BOLTS	"			
III	20	"	"			

CARRIAGES BETWEEN FRAMES 33-39 AND 137-143



SECTION LOOKING FORWARD

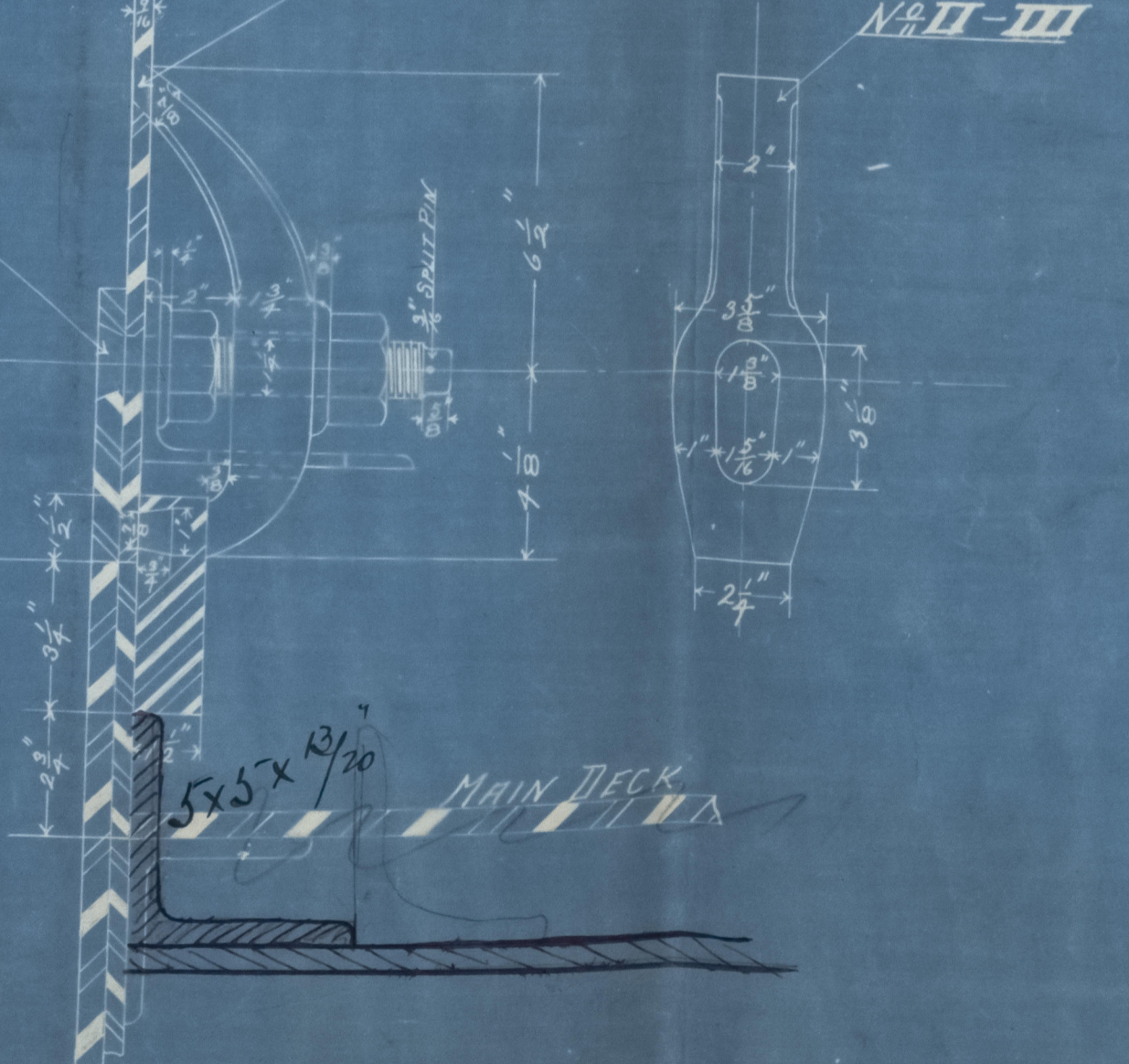
PLAN PORT AT FRAME 80 PORT & STEER

SECTION AT 80 LOOKING FORWARD

NOTE: DOES TO BE MADE AS NOTED AND ALTERED TO SUIT INNER STRONG

Nº II-III

Nº 7-8-9

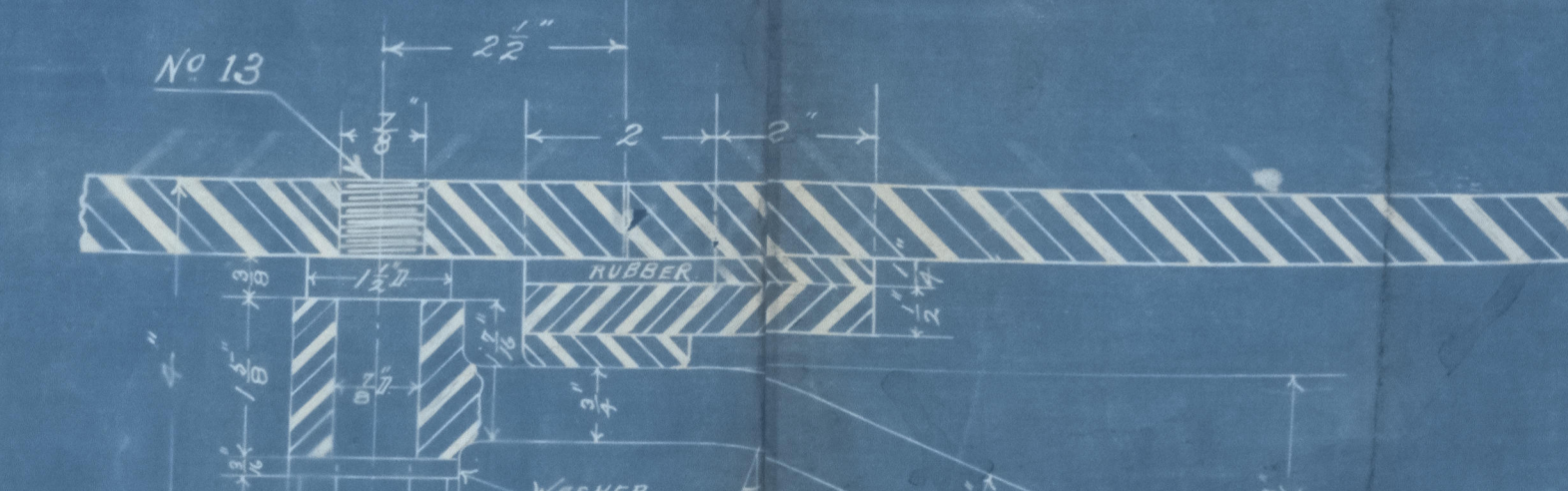
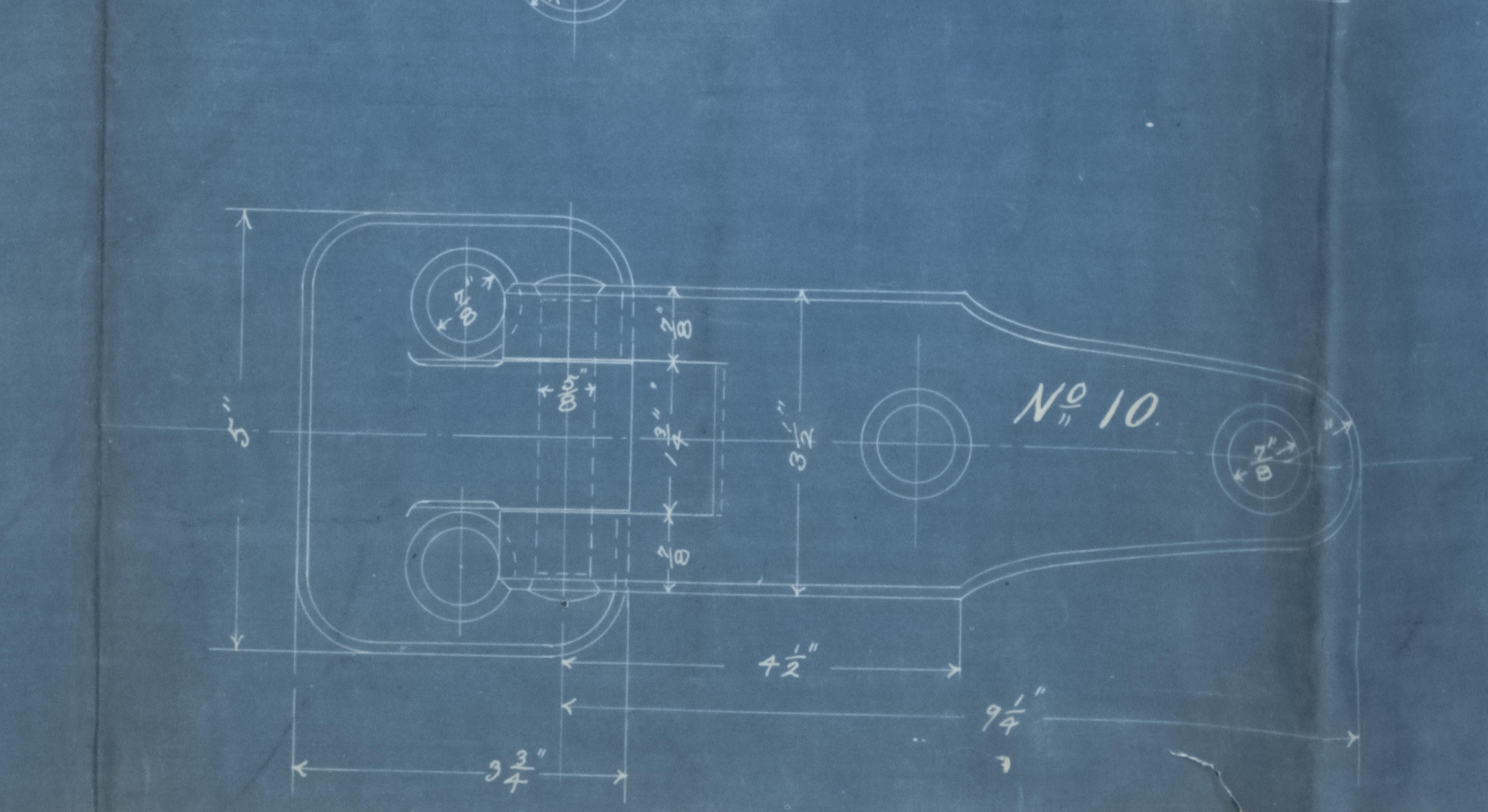
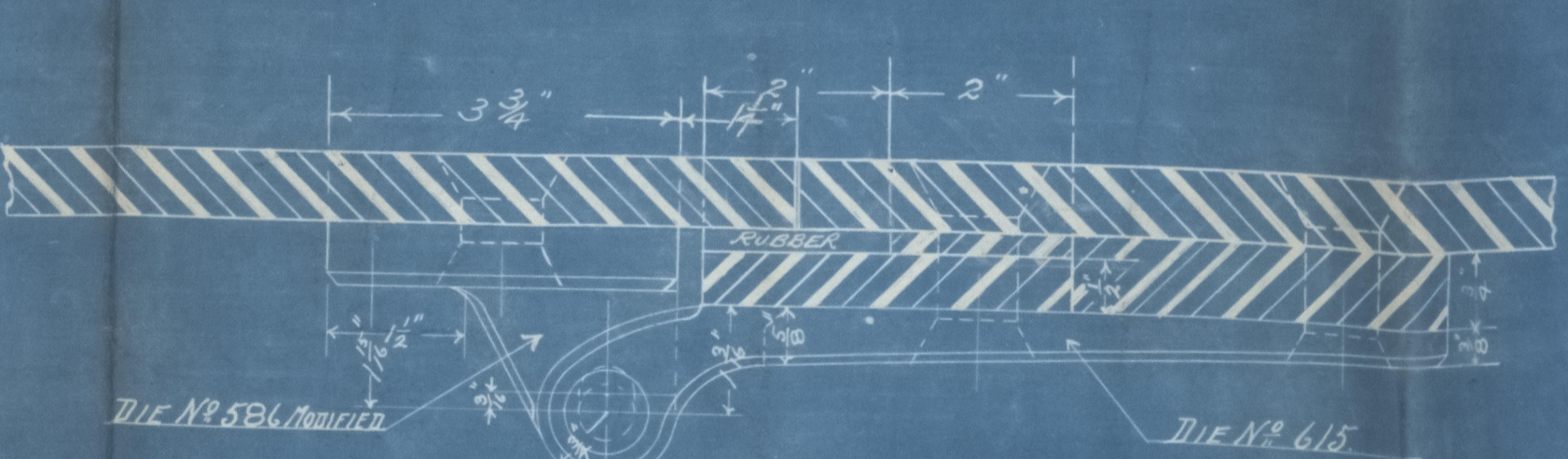


NOTE: LOCK ALL HOLES BY WORK

OLD PATTERN ALTERED

DO NOT DOOR WILL OPEN WAY BACK

DETAIL OF HINGE CAST STEEL

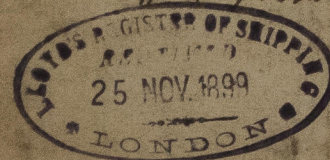


THE WM. CRAMP AND SONS S. & E. B. CO.
 OFFICE OF CONSTRUCTION DEPARTMENT PHILADELPHIA, PA.
HULL Nº 304-306
 TWIN SCREW P & F STEAMERS FOR THE OCEANIC S. CO.
 DETAIL OF CHOCK & HATCH PORTS BETWEEN MAIN
 AND UPPER DECK
 DRAWN BY M. L. DREER. CHECKED BY J. H. DREER. DATE 1-10-1899. SCALE 1"=6'-0"
 TRACED BY J. H. DREER. DATE 1-10-1899. SCALE 1"=6'-0"
 CONSTRUCTION'S SIGNATURE: *[Signature]*
 DRAWING NO. 30

Cargo Ports -

Twin Sea Steamer

N. 304-5 & 6
Wm Gray & Son Sec. Dk.



Kept N. 965 -



© 2021

Lloyd's Register
Foundation