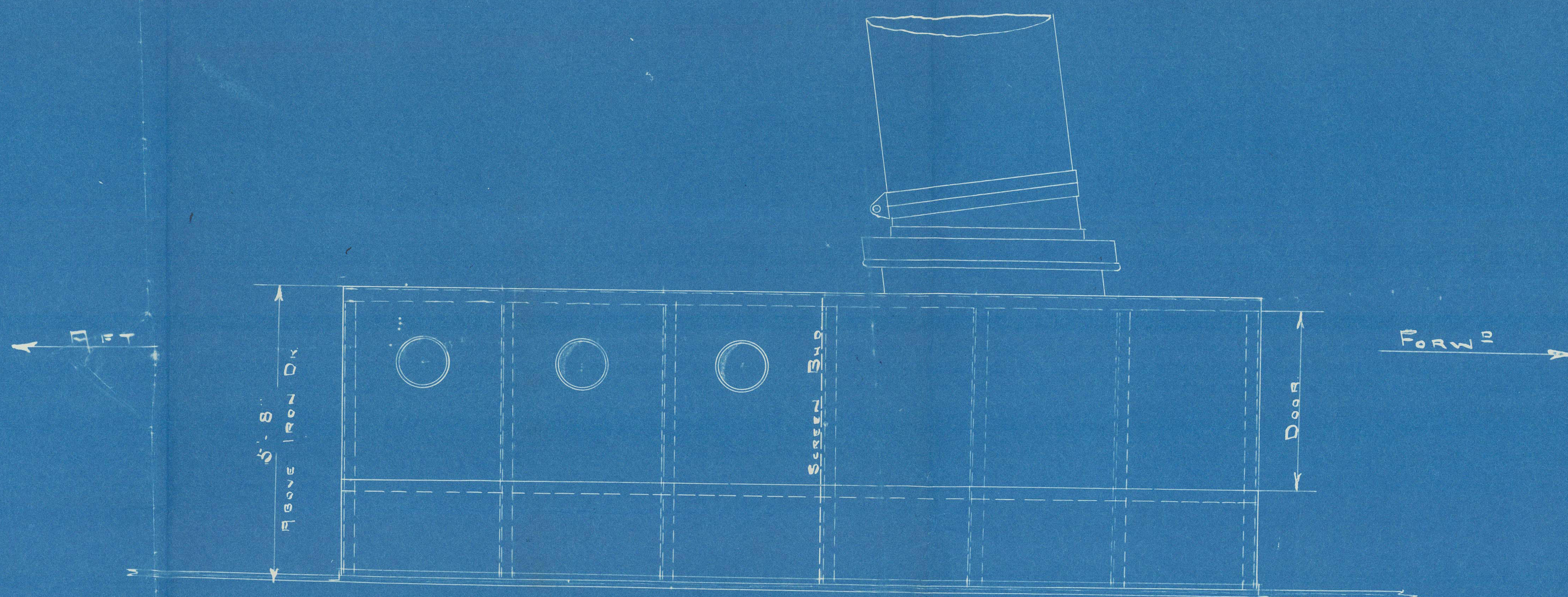


12' 0" 5' 4" x 20' 0"

S. S. M. 1000

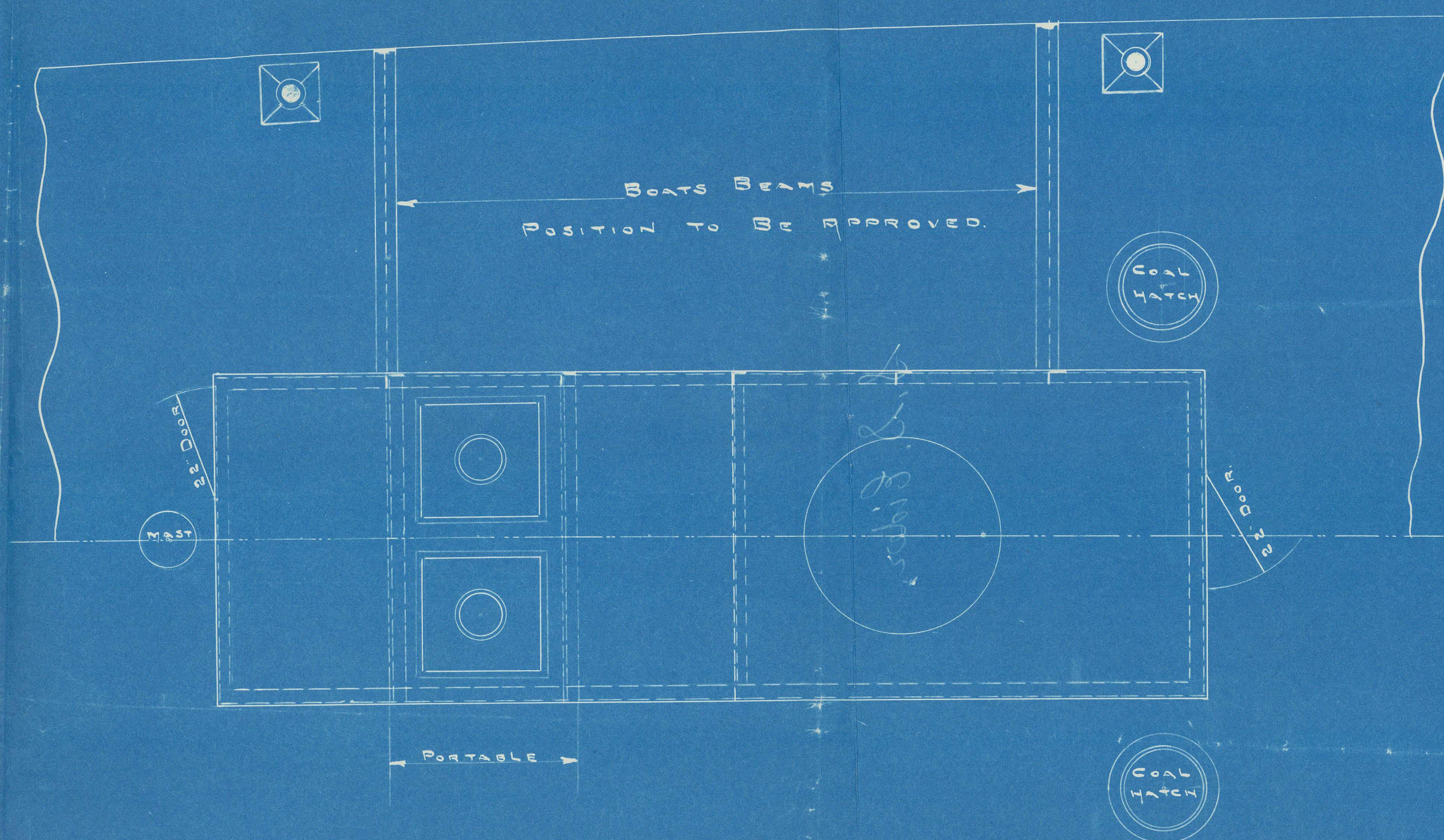
ALTERATIONS TO CABIN & BOY'S
SCALE 1" = 1 FOOT

THE WALLSEND
SLIPWAY & ENGINEERING CO., LTD.
NEWCASTLE-UPON-TYNE.
No. DATE Nov. 19th 1900
E. S.



ELEVATION OF CABIN

PLAN OF UPPER DECK



BOY'S BOAT
POSITION TO BE APPROVED.

PORTABLE

S.S. "Eider"

Boiler Casings

Newcastle Report

No. 41616



© 2021

Lloyd's Register
Foundation

NWC875-0081