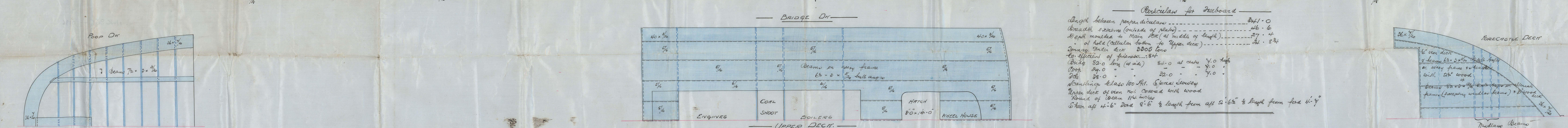
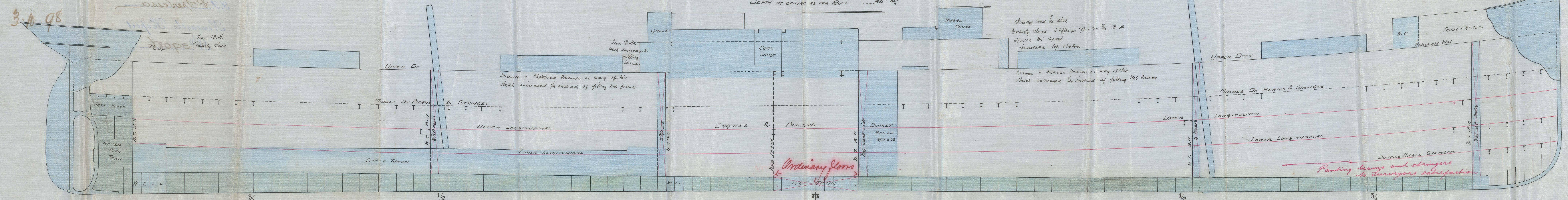


Profile & Deck Plans No 342.

Dimensions as per Rule
 LENGTH AS PER RULE 339.08
 BREADTH MOULDED 46.30
 DEPTH AT CRITER AS PER RULE 28.27



Particulars for Foreboard

Length between perpendiculars 341.0

Breadth extreme (outside of plating) 46.6

Depth moulded to main beam (at middle of length) 27.4

Depth of hold (cellular bottom to upper deck) 31.8

Distance under deck 330.0

Co-efficient of fineness .84

Keel 32.0 long (at side) 81.0 at centre 4.0 high

Keel 29.0 " " 22.0 " " 4.0 "

Keel 28.0 " " 22.0 " " 4.0 "

Scantling class 100 ft. Special survey

Upper deck of iron not covered with wood

Round of beam 11 1/2 inches

Sheer aft 4.6" over 8.6" to length from aft 2.6" to length from fore 4.4"

JOHN READHEAD & SONS,
 Engineers, Boiler Makers,
 Iron & Steel Shipbuilders,
 SOUTH SHIELDS.

JOHN READHEAD & SONS,
 Engineers, Boiler Makers,
 Iron & Steel Shipbuilders,
 SOUTH SHIELDS.

Messrs Readhead & Sons

S. S. No 342

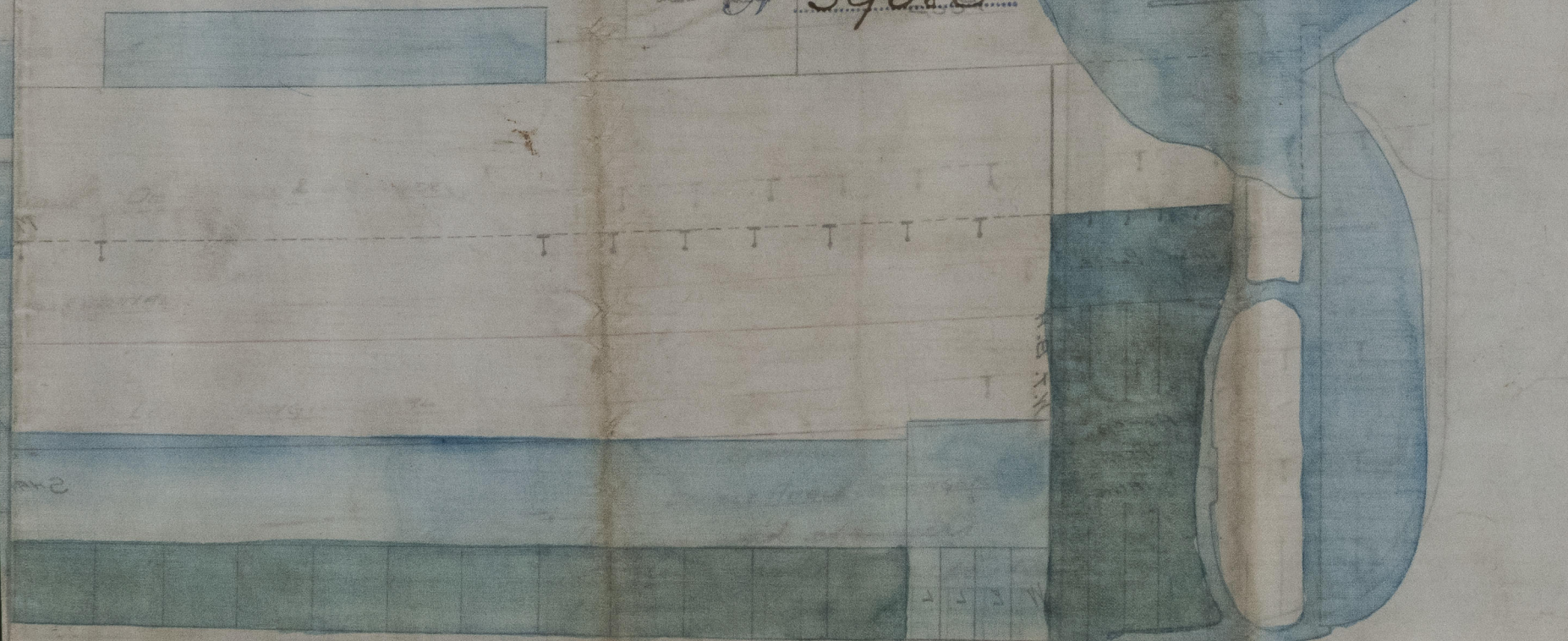
Profile

Que. Abt. Rpt. No 37296

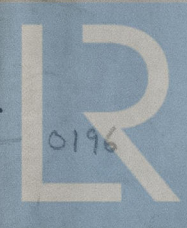
G. P. Drenessa

Newcastle Report

Scale 1/20
No 39086



A/C



© 2021

Lloyd's Register
Foundation

NWC 866 0196

Room 10