

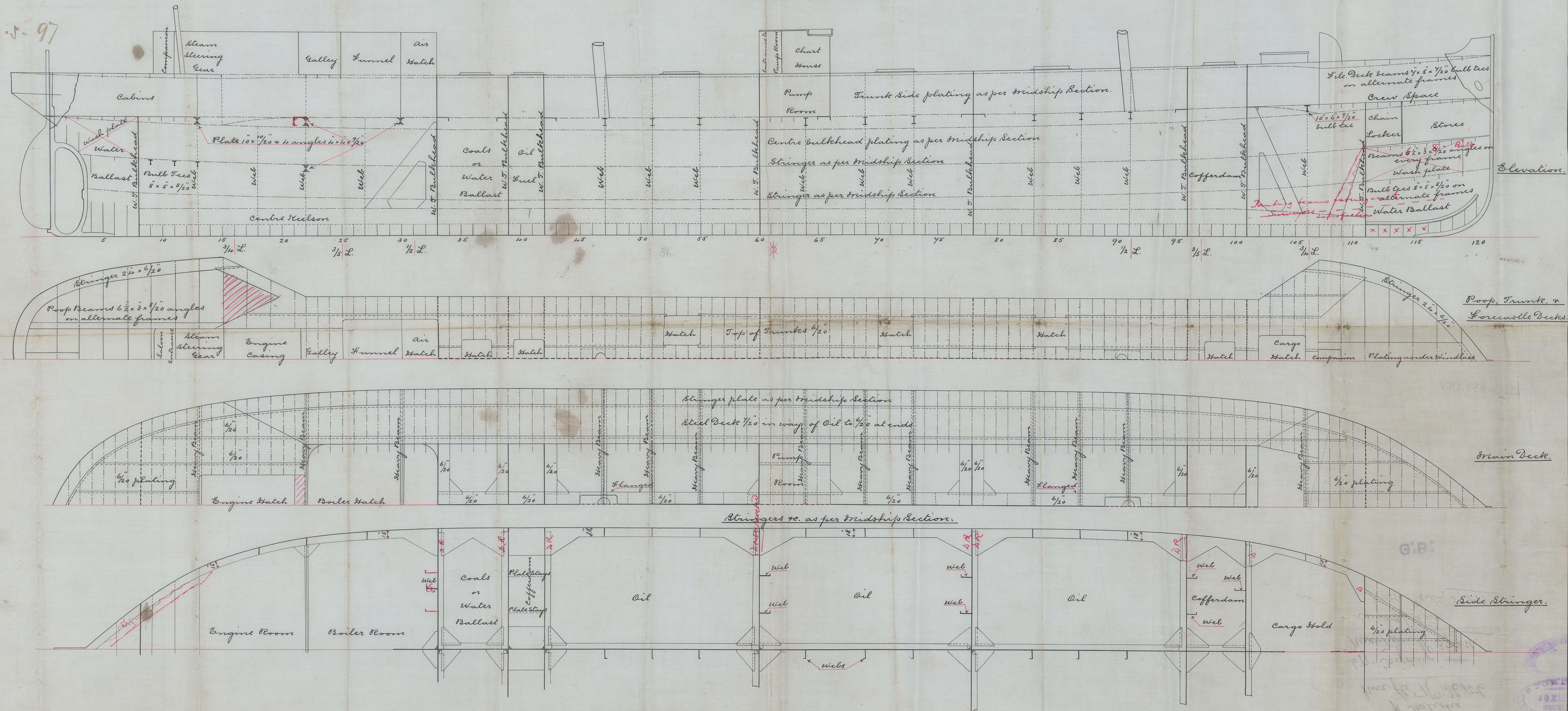
Nos. 677 & 8 Single Decked Tankers.

Longitudinal Plan.

Scale 1/8" = 1 Foot.

Sir W. G. ARMSTRONG, WHITWORTH & CO. Limited.  
NEWCASTLE-UPON-TYNE.  
No 11992 DATE 14/5/97  
WALKER SHIPYARD

18.5.97



14.1  
18/5/97

NWC 858-0137



Sir W. L. Armstrong  
Whitworth & Co Ltd  
amended

Profile 677 & 678

of Trig

Inv fls No 35763

of Station

Inv fls No 36156

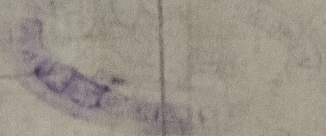
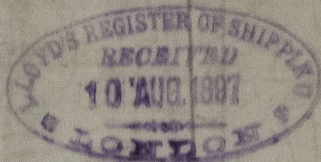
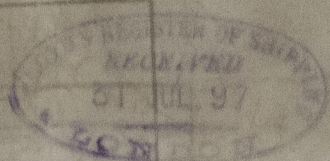
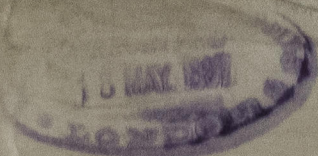
677 'Trigon' —

Inv fls No 37211

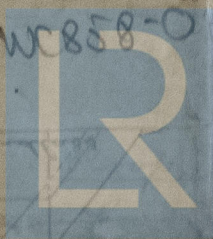
of Station

Inv fls No 37713

G.B.



NWC858-O 37 © 2021



Lloyd's Register  
Foundation