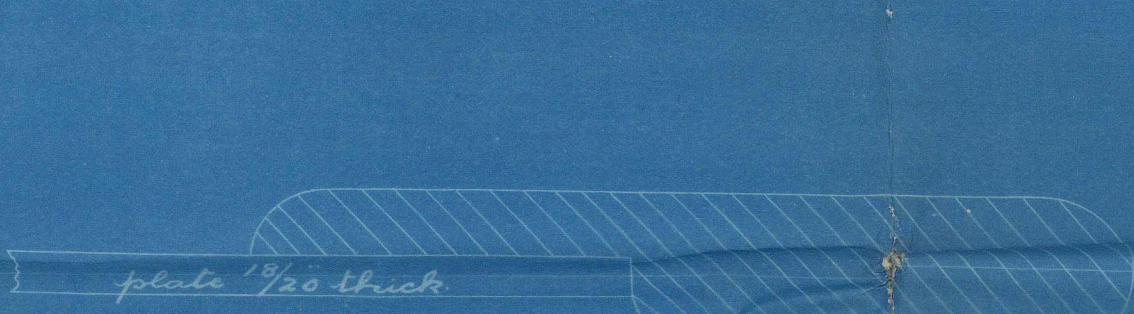


Section thro A. B.



Section thro C. D.



Section thro E. F.

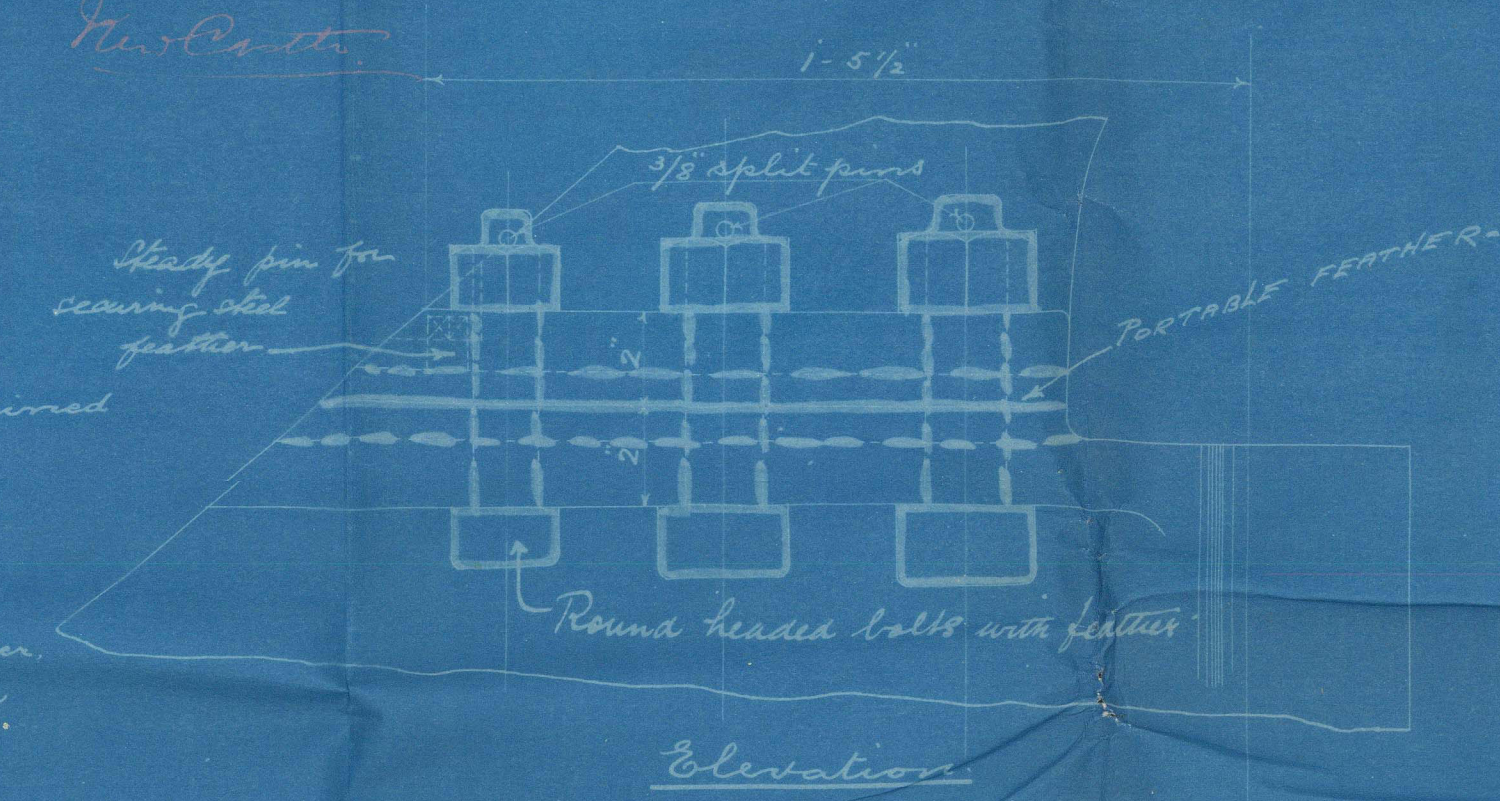
Plan of Stern Post, Stem & Rudder.

for No. 3. to 3. Amstron.

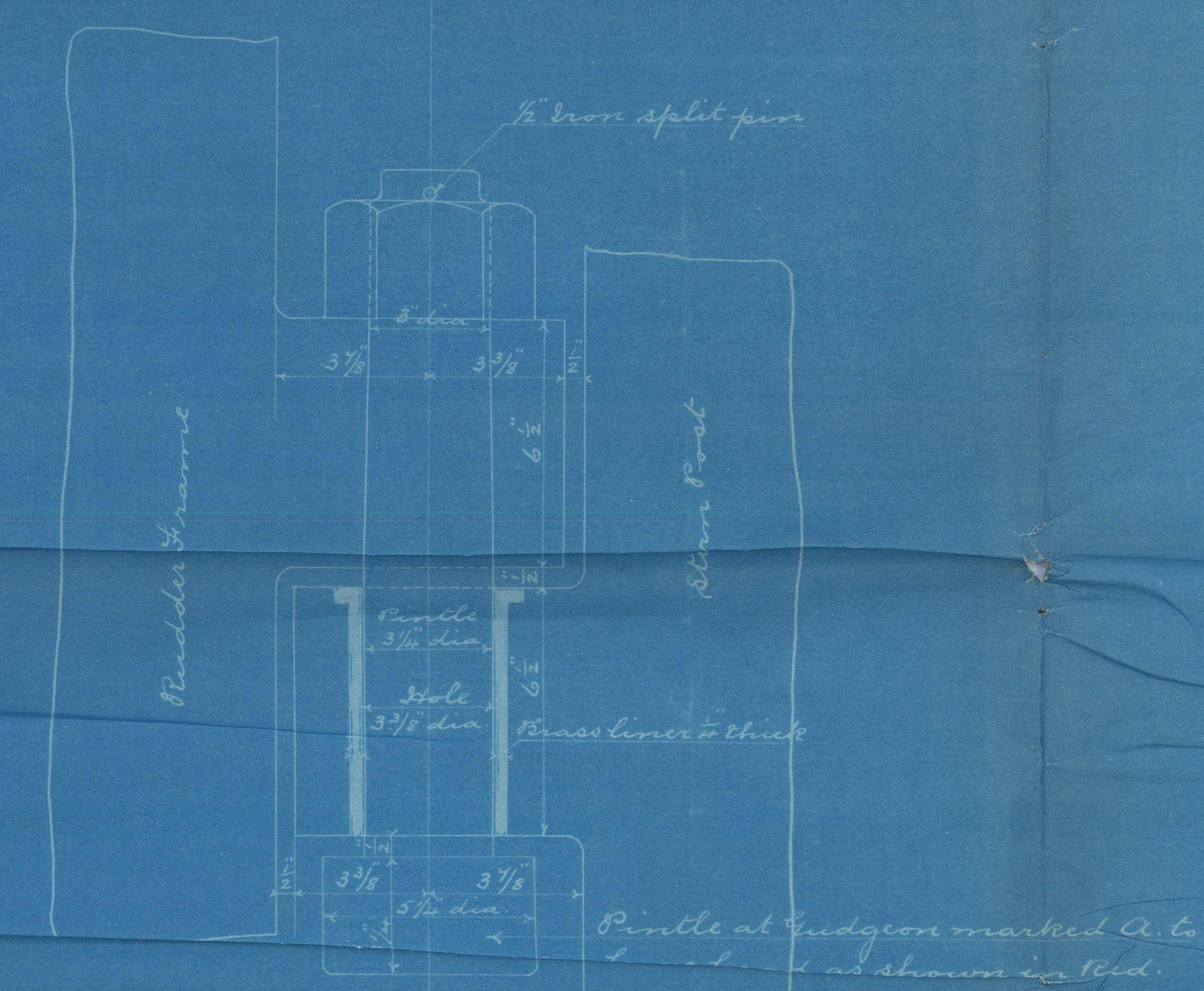
Scale 3/4" = 1'-0"

Detail of Rudder Coupling

Scale 3/4" = 1'-0"

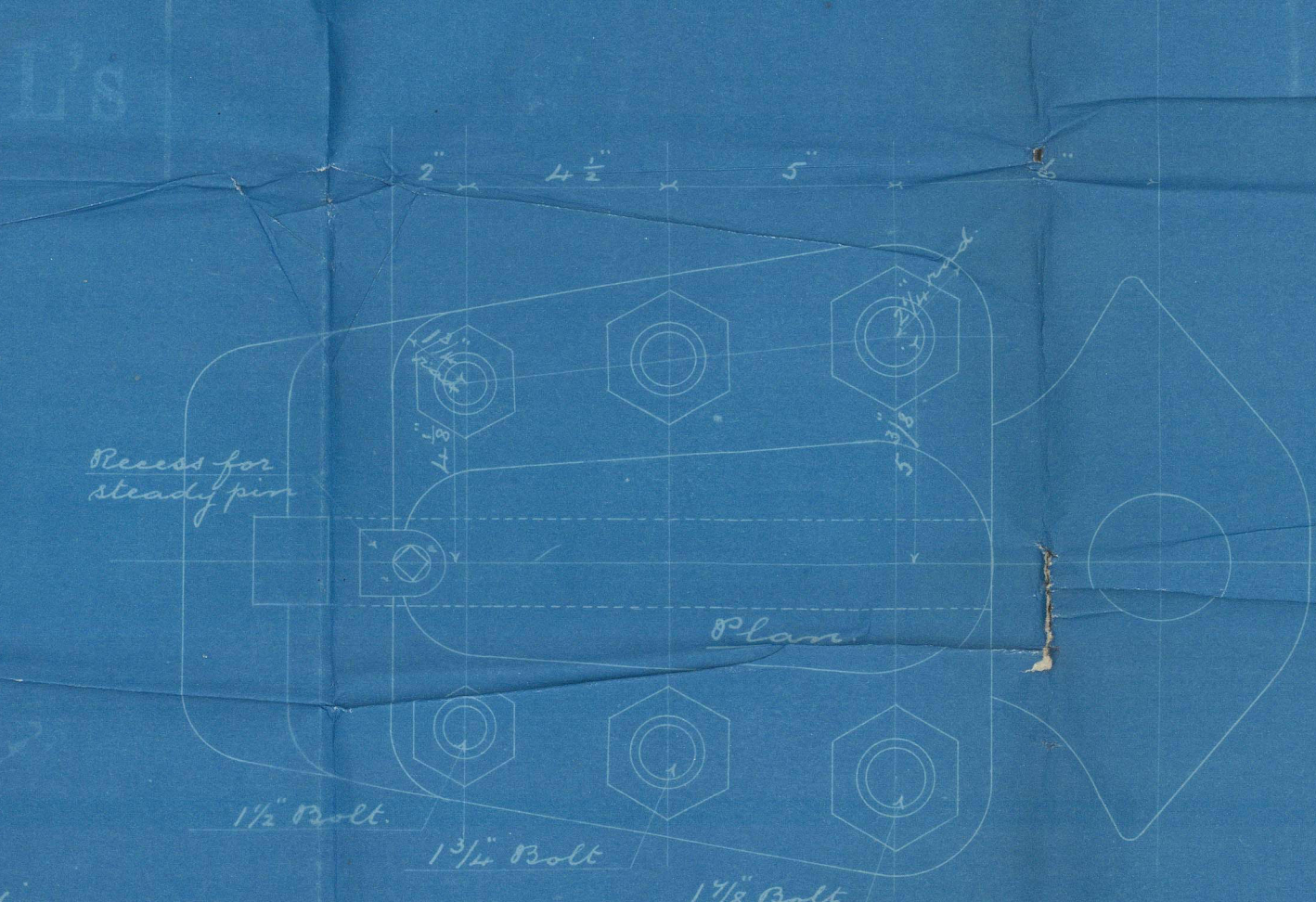


Elevation

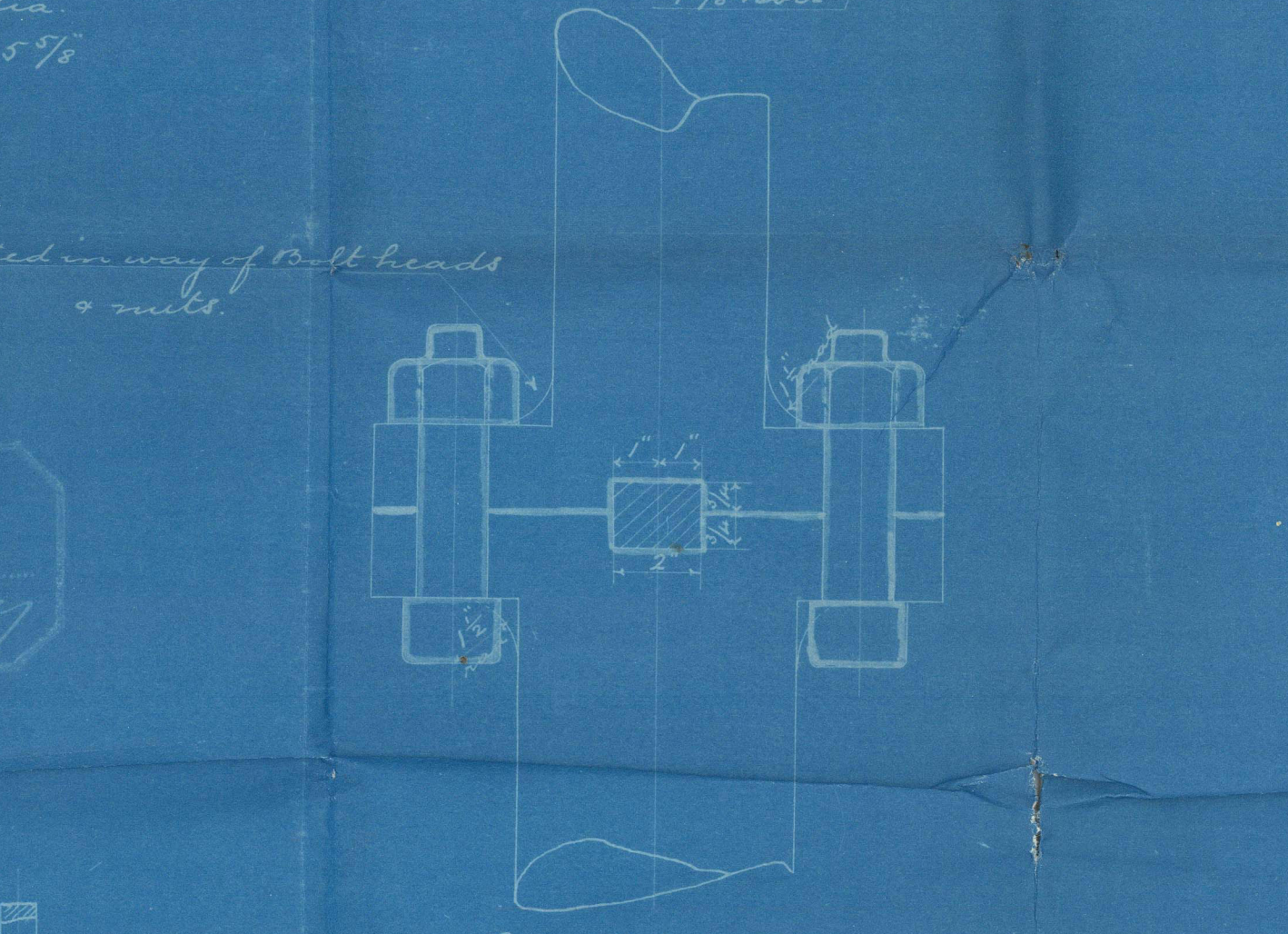


Sectional Elevation of Rudder & Sternpost

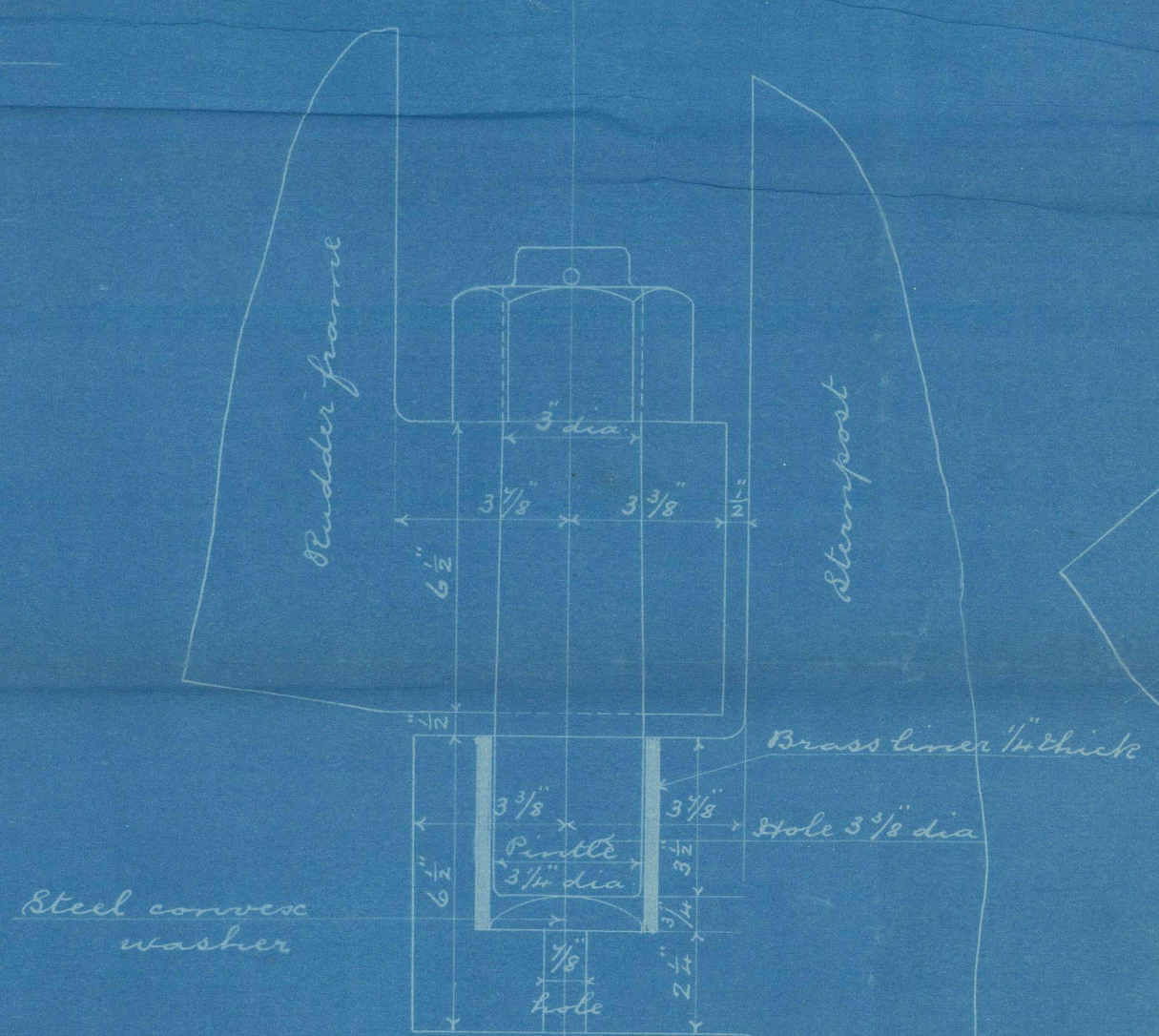
Rudders at B. & C.



Plan

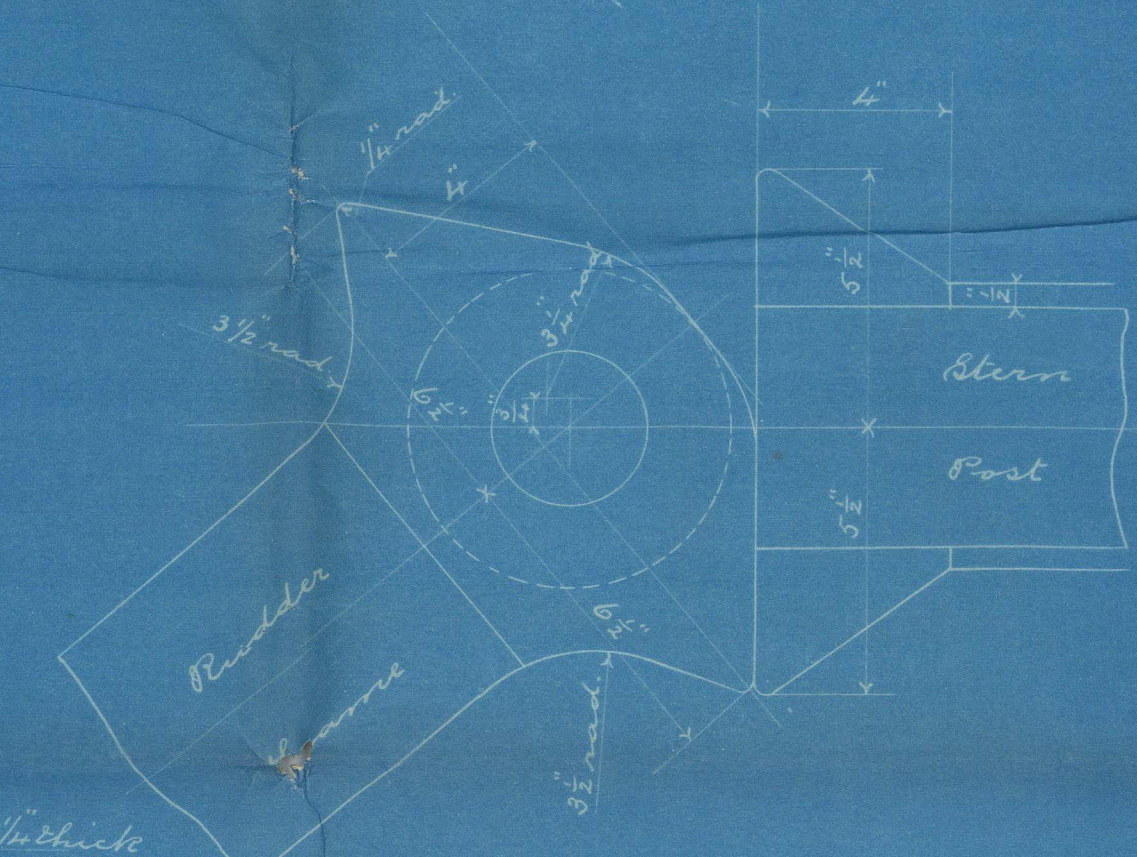


End Elevation



Sectional Elevation of Rudder & Sternpost

Rudders at B. & C.

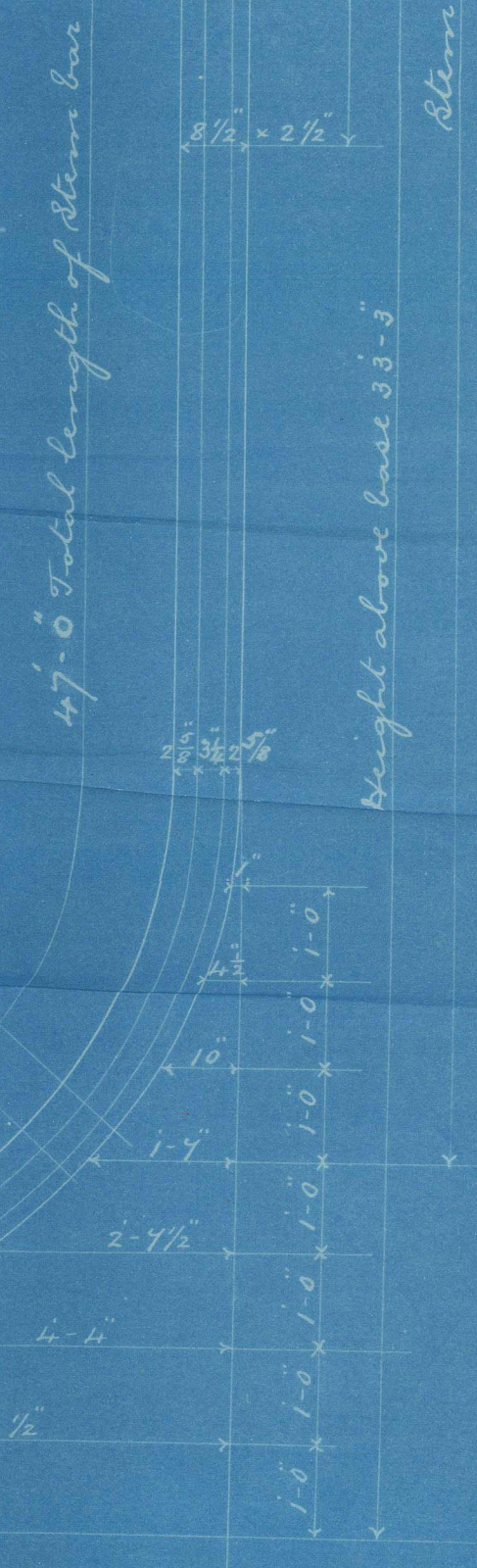


Plan of Stopper

Stopper on Rudder and Stern post to fit.

ORDER No. 466 1/5/1897

Holes in Stern Bar 1 1/2 inch dia for 1 1/2 inch rivets spaced 5/8 inch apart Centre to Centre.



Plan of Rudder End

1 1/2 inch Bolt

1 1/2 inch Bolt

1 1/2 inch Bolt

1 1/2 inch Bolt

1 1/2 inch Bolt

1 1/2 inch Bolt

1 1/2 inch Bolt

1 1/2 inch Bolt

1 1/2 inch Bolt

1 1/2 inch Bolt

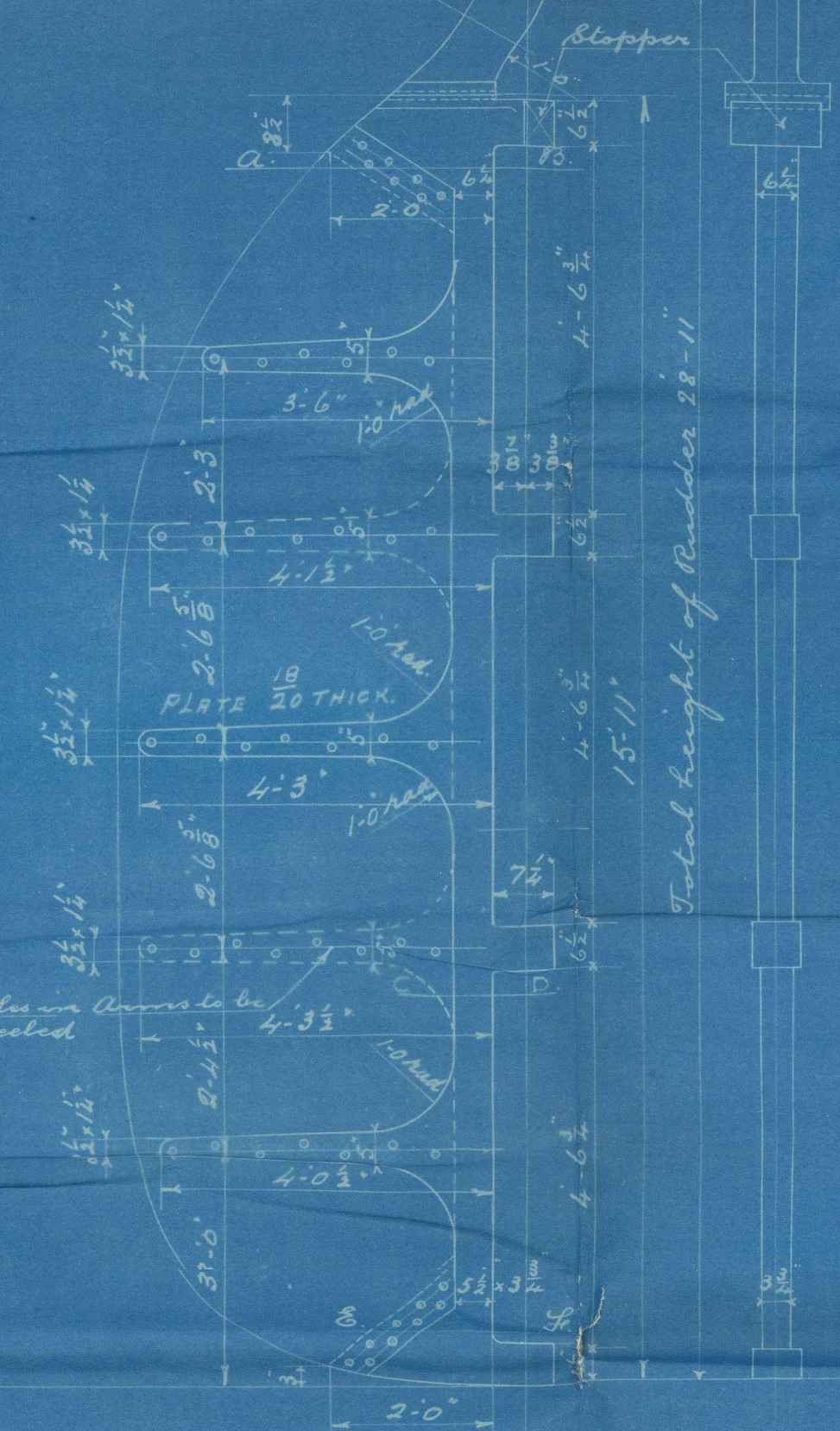
1 1/2 inch Bolt

1 1/2 inch Bolt

1 1/2 inch Bolt

ORDER No. 449 1/5/1897

Cost 36.1 Rudder



Plan of Rudder

1 1/2 inch Bolt

1 1/2 inch Bolt

1 1/2 inch Bolt

1 1/2 inch Bolt

1 1/2 inch Bolt

1 1/2 inch Bolt

1 1/2 inch Bolt

1 1/2 inch Bolt

1 1/2 inch Bolt

3 Arms on Stern Post

3 Arms on Stern Post

3 Arms on Stern Post

3 Arms on Stern Post

3 Arms on Stern Post

3 Arms on Stern Post

3 Arms on Stern Post

DANLINGTON FORGE CO. LTD. No. 114774. Date 2/15/97. LLOYD'S REGISTER FOUNDATION

Armstrong Whitworth

TCs 677-8

of Trigonia

Mus. F.E. No 37211

of Haliotis

Mus. F.E. No 37213

NWC858-0135



© 2021

Lloyd's Register
Foundation