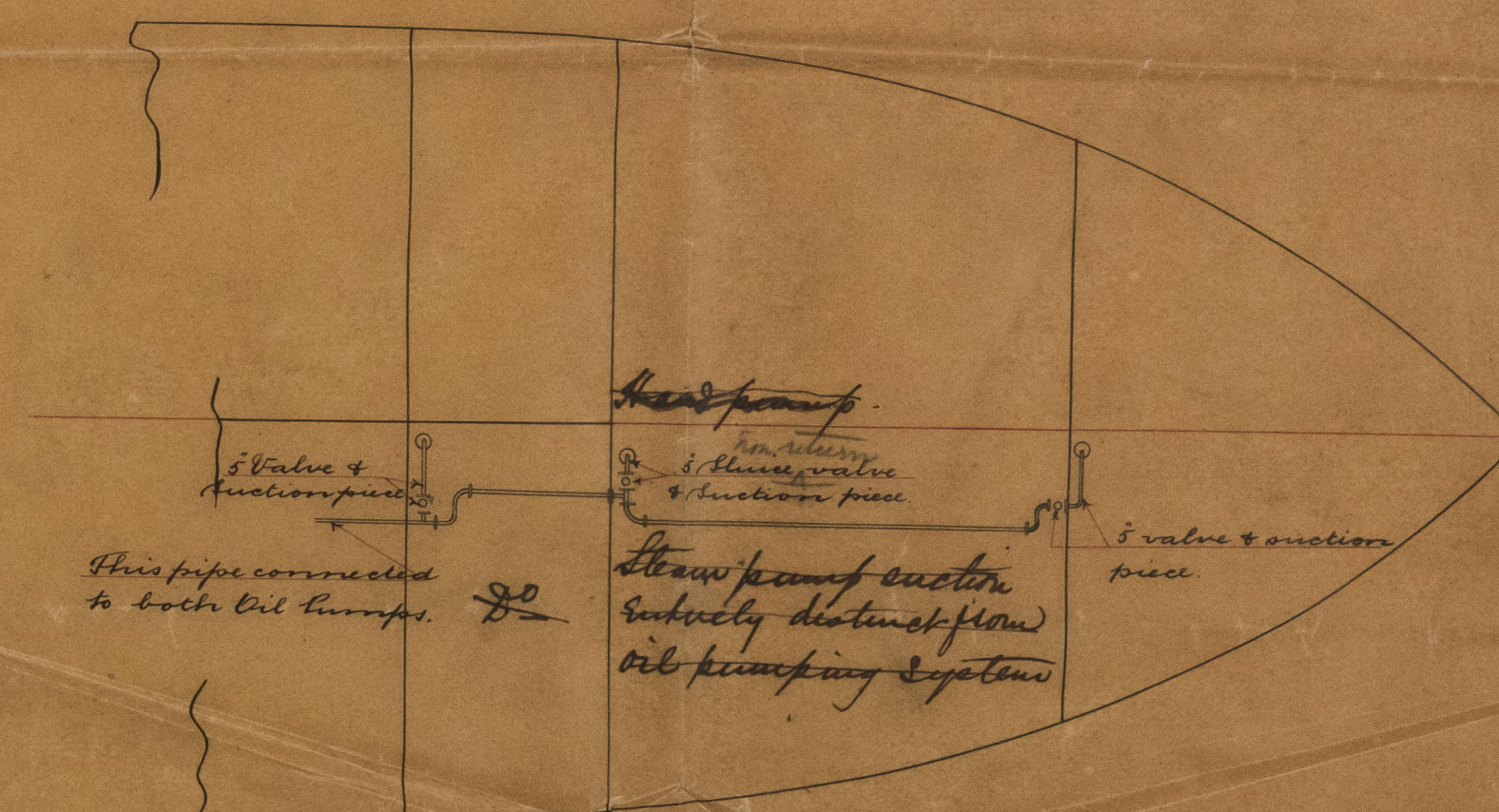
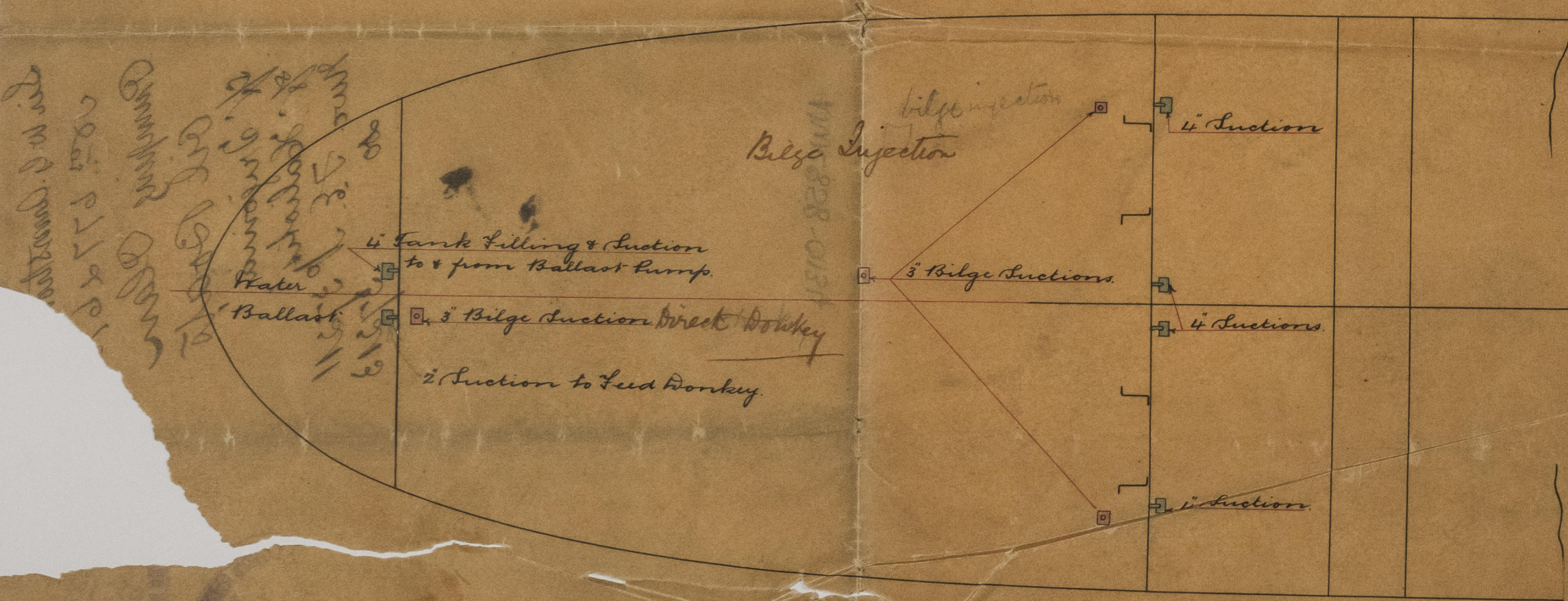
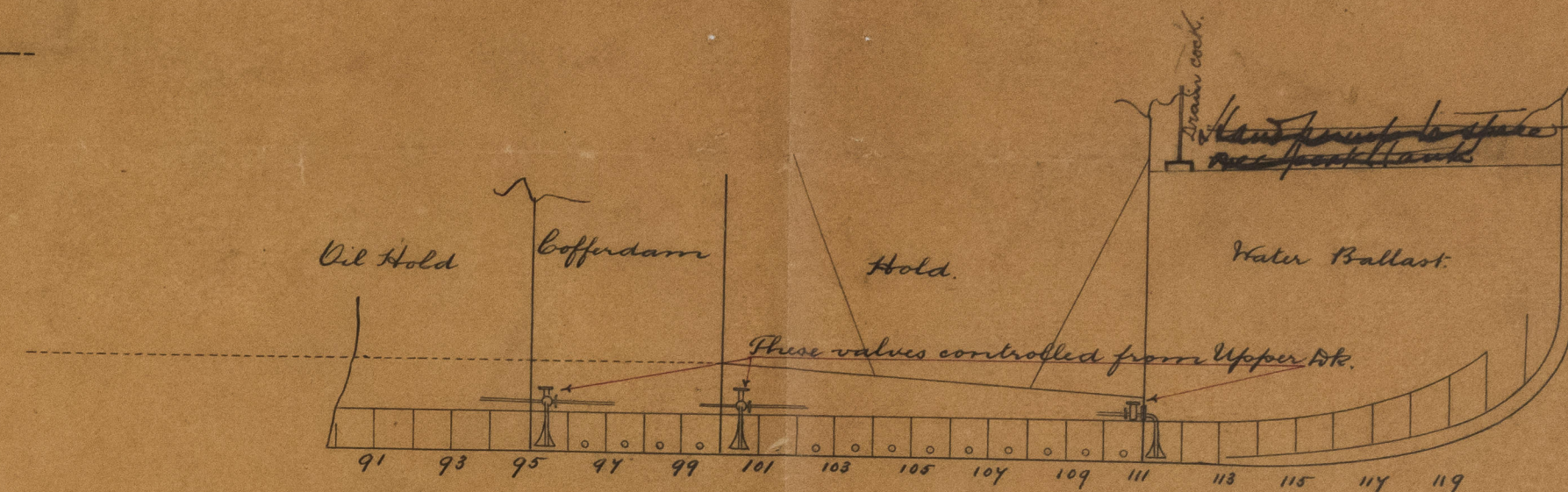
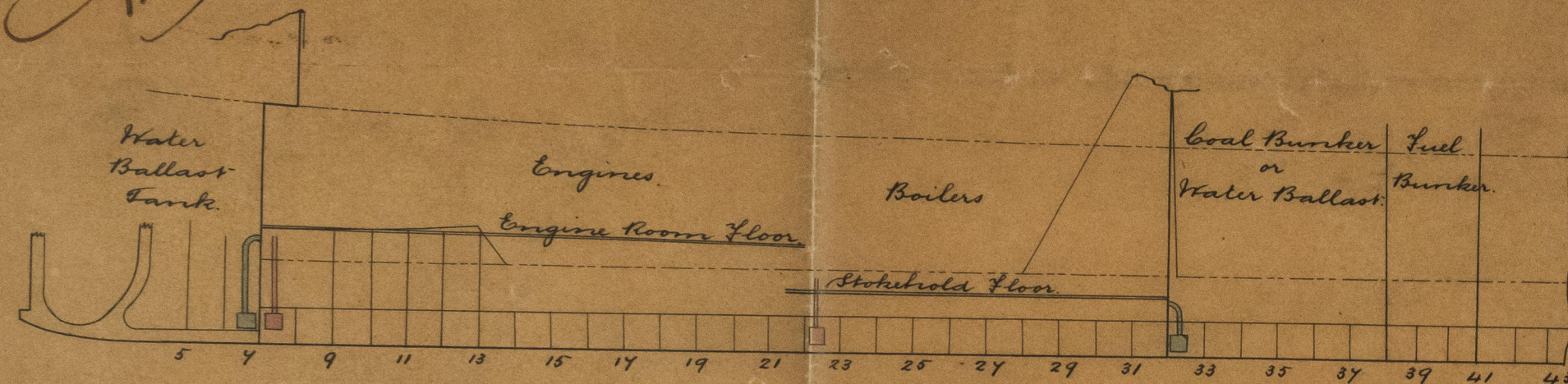


See Rfr
31/8/97
11.8.97

Nos 677 & 8

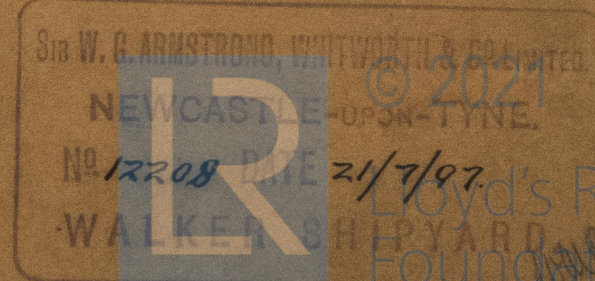
Arrangement of Ballast and Bilge Suctions.

Scale 1/8" = 1 Foot.



Note. Under Deck Tonnage 1322 tons.

J.M.
3/8/97



NWX 858-0134

57213

NWE 858-0134

1855
 1856
 1857
 1858
 1859
 1860
 1861
 1862
 1863
 1864
 1865
 1866
 1867
 1868
 1869
 1870
 1871
 1872
 1873
 1874
 1875
 1876
 1877
 1878
 1879
 1880
 1881
 1882
 1883
 1884
 1885
 1886
 1887
 1888
 1889
 1890
 1891
 1892
 1893
 1894
 1895
 1896
 1897
 1898
 1899
 1900

27/10/18

Lloyd's Register
Foundation

[Handwritten notes in cursive script, likely representing musical notation or a list of names.]

$\frac{f}{g} = \frac{f_0 + f_1 x + f_2 x^2 + \dots}{g_0 + g_1 x + g_2 x^2 + \dots}$

2
 2
 2
 4
 8