

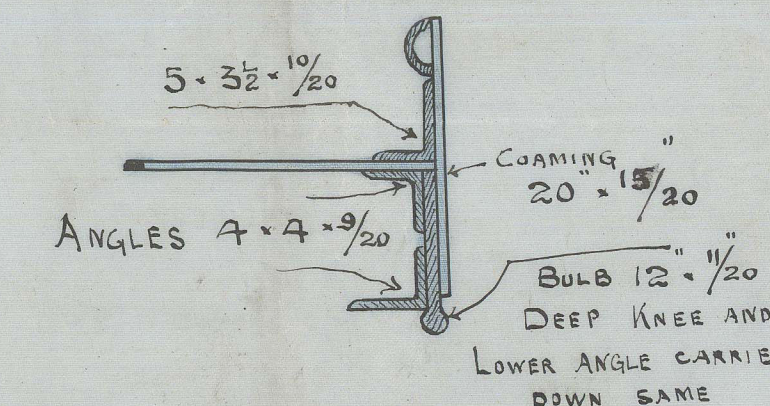
23.1.96

STEEL SPAR DECK STEAMER

Nº 318

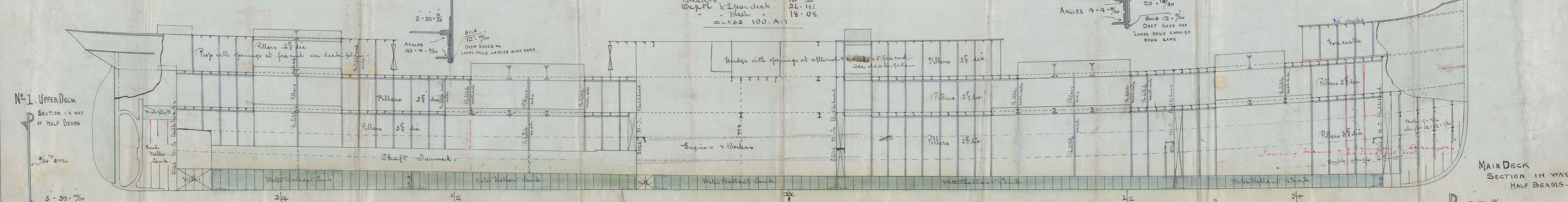
Length as per rule 310.29
 Breadth 140.82
 Depth to Spar deck 26.11
 " Main 18.08
 CLASS 100.A-1

MAIN DECK HATCH END BEAMS



Nº 1. UPPER DECK

SECTION IN WAY OF HALF BEAMS

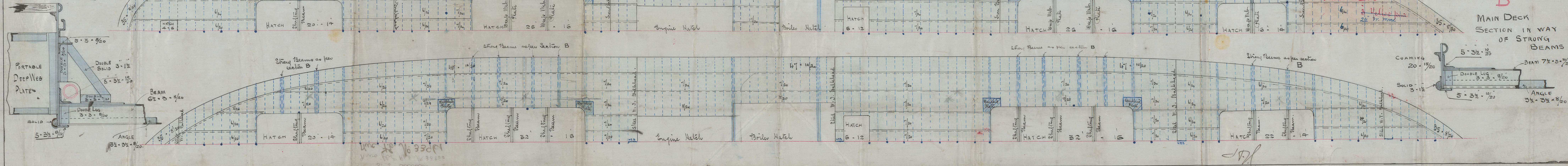


MAIN DECK
SECTION IN WAY
OF HALF BEAMS.

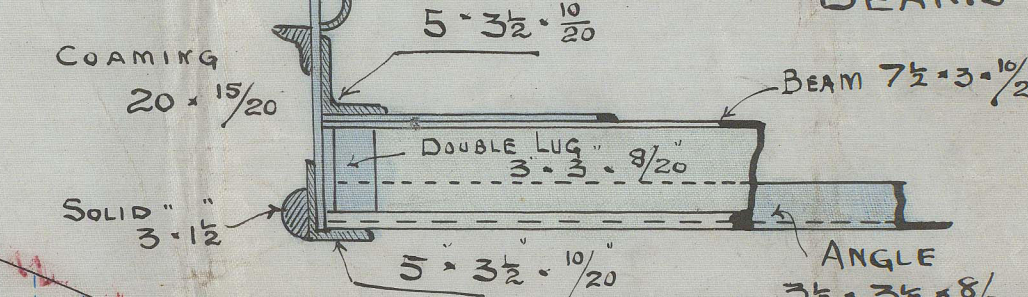
Particulars for Freeboard

Length between perpendiculars 312.0
 Breadth extreme 141.0
 Depth moulded to Spar Deck 25.1
 " Main 17.5
 " of hold to Cellular bottom 23.5
 Volume under Spar Deck 2316 TONS.
 Co-efficient of fineness 90.0
 Bridge with openings as follows 90.0 long 8.5 high
 Portholes 64.8
 Forecastle (closed) 37.4
 Scantlings class 100.A-1. Special Survey
 Spar & Main decks of steel - not covered with wood
 Sound of Beam 10 mms
 Shear aft 5.0. For 7.5 1/2 from aft 1.4 - also for 5.1
 Strong Beams as per Section A

"A" UPPER DECK SECTION IN WAY OF KNEES & STRONG BEAMS



"B"
MAIN DECK
SECTION IN WAY
OF STRONG BEAMS



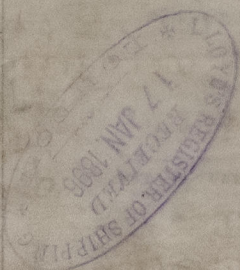
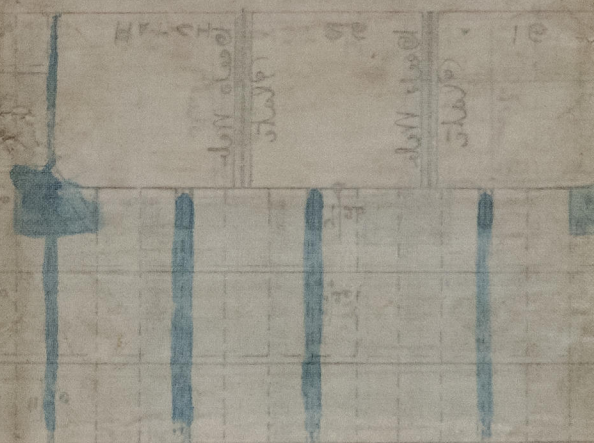
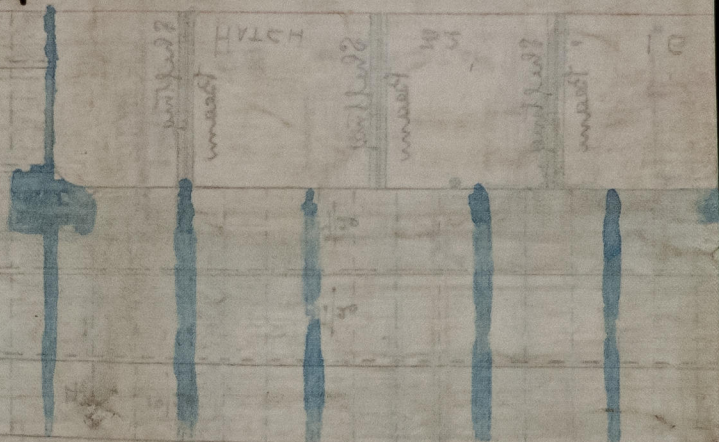
16-1-96

Readhead Sons.
S. S. No 318

Longitudinal plan,
S. S. Savan

Two floor Rpt No 33866

New F.C. No 33961



© 2021

Lloyd's Register
Foundation