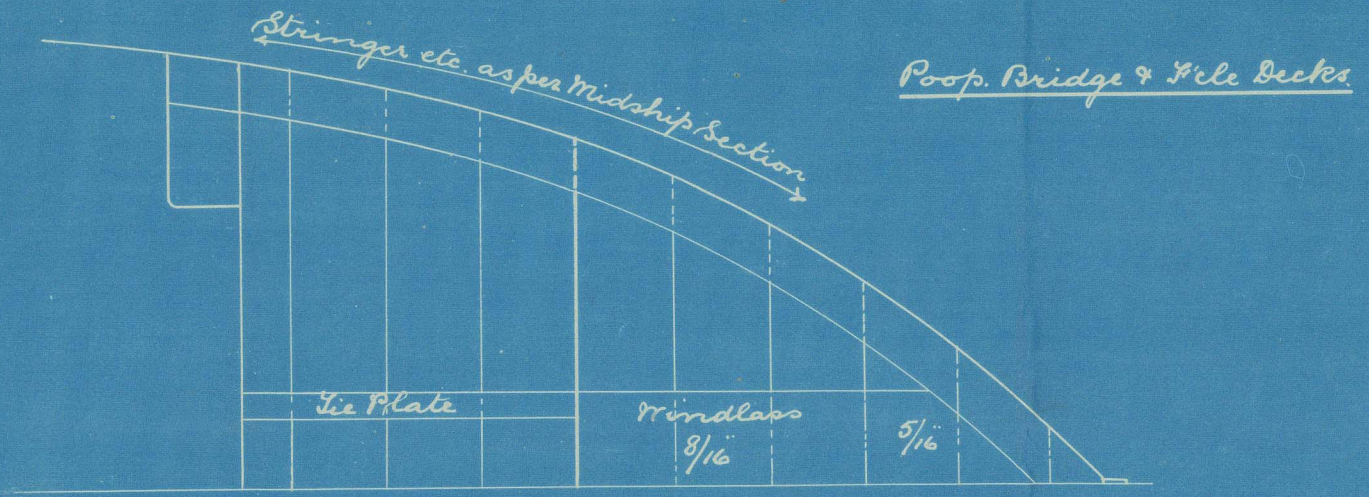
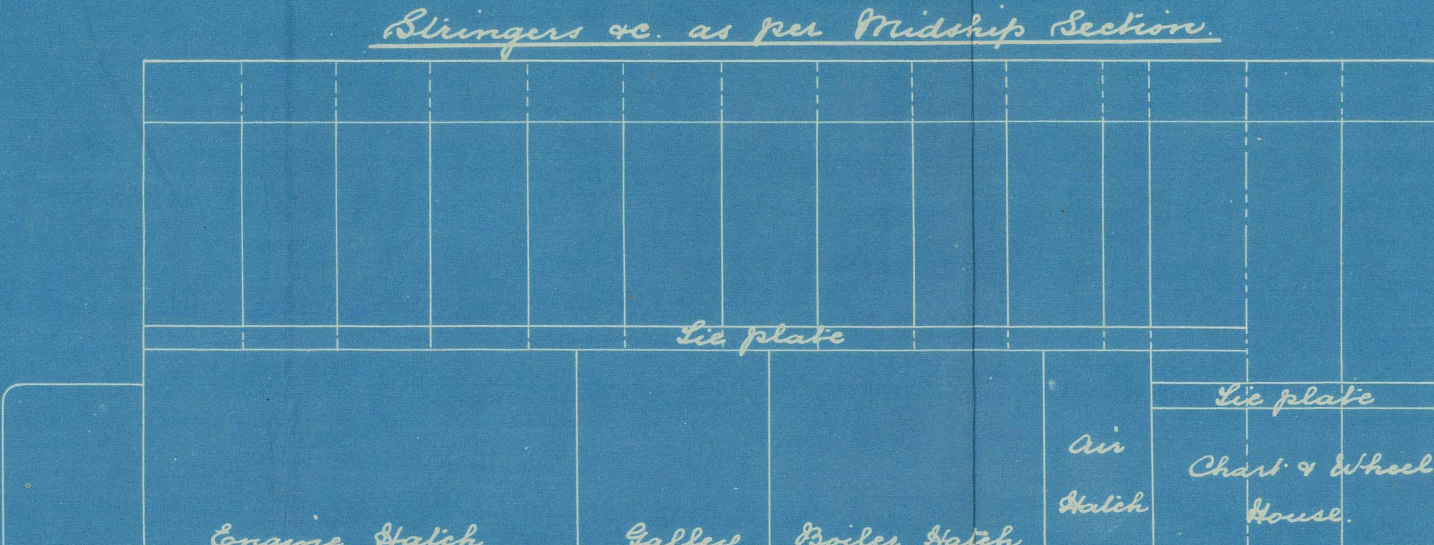
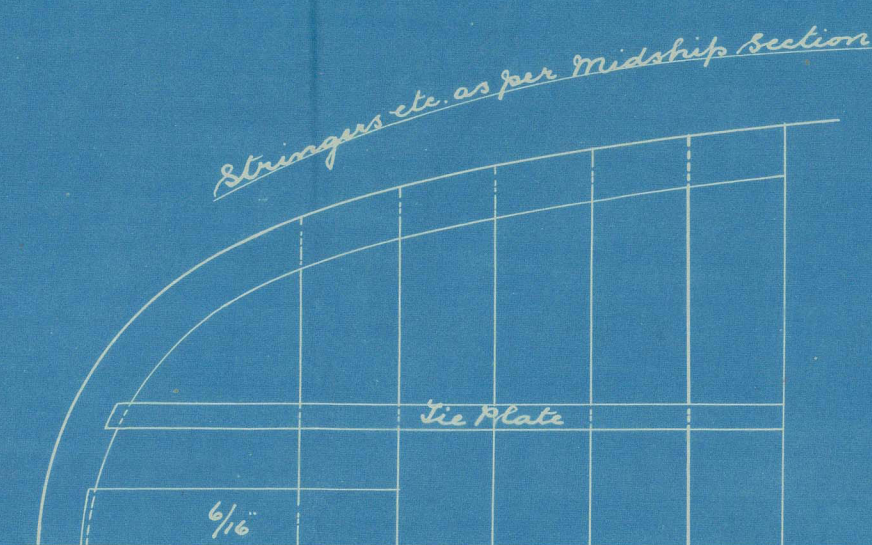
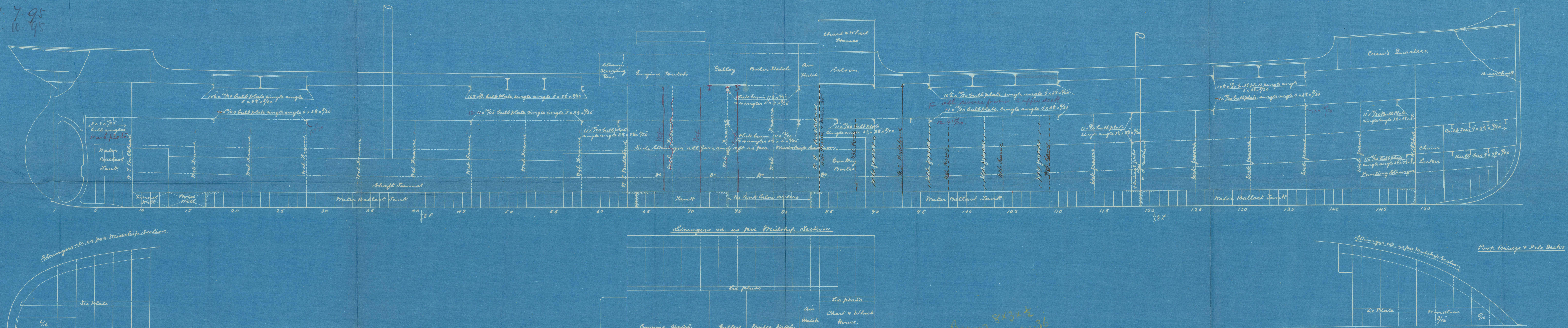
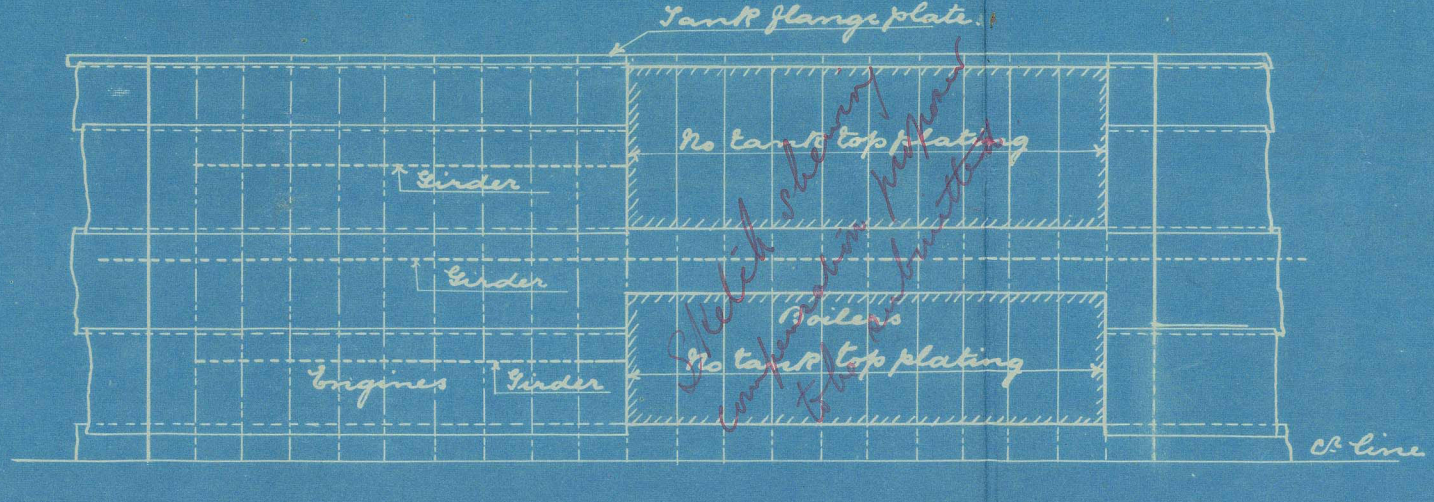
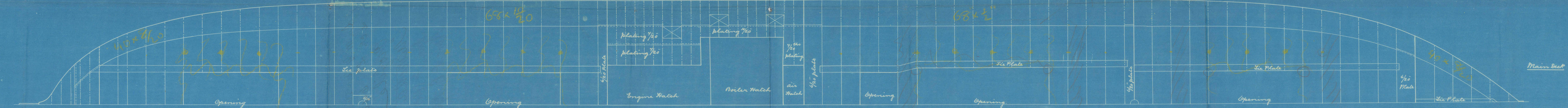
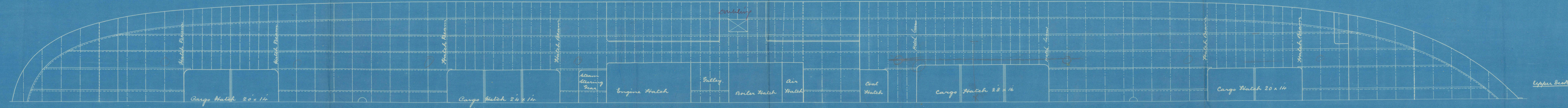


S.S. No 640. 7641 appd. 21.10.95  
 Longitudinal Plans  
 Scale 1/8" = one foot

31.7.95  
 21.10.95



Owner: 843 x 2  
 Rule: 643 x 36



Principal Dimensions

	Feet inches
Length overall	130 - 0
Length between perps	120 - 0
Breadth extreme	26 - 0
Depth moulded	23 - 5
Depth of hold	23 - 5
Breadth of water	23 - 5

Scale 1/8" = one foot

Wm W. G. ARMSTRONG, MITCHELL & CO LIMITED.  
 NEWCASTLE-UPON-TYNE  
 No 9445 DATE 29.4.95  
 WALKER SHIPYARD



FOR ENCLOSURE TO

*Lloyd's*

From ARMSTRONG, MITCHELL & Co.,

WALKER SHIPYARD.

NWC 846-0012 <sup>2</sup>/<sub>2</sub>

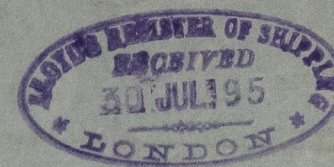




Sir W. G. Armstrong Mitchell  
& Co. L<sup>ds</sup> 640

Profile  
"Maritta"

Nwc No (for) 32993  
Nwc F. E. Rpt No 33039



NWC846-0012 1/2



© 2021

Lloyd's Register  
Foundation