

20.3.94

BOILER . CONTRACT N^o 421-44

Messrs The Tyne Iron Shipbuilding Co. S.S. No 105.
 On W. Armstrong & Co. 78 840 (18/6/94)
 Constructed to pass Lloyd's, Board of Trade requirements, and Hamburg Law.

2 off thus. Scale 1" = 1 foot.
 25 1/4" 30 1/4" 34 1/4"

Materials -
 Plates Steel
 Rivets Steel
 Stays Steel
 Tubes Iron.

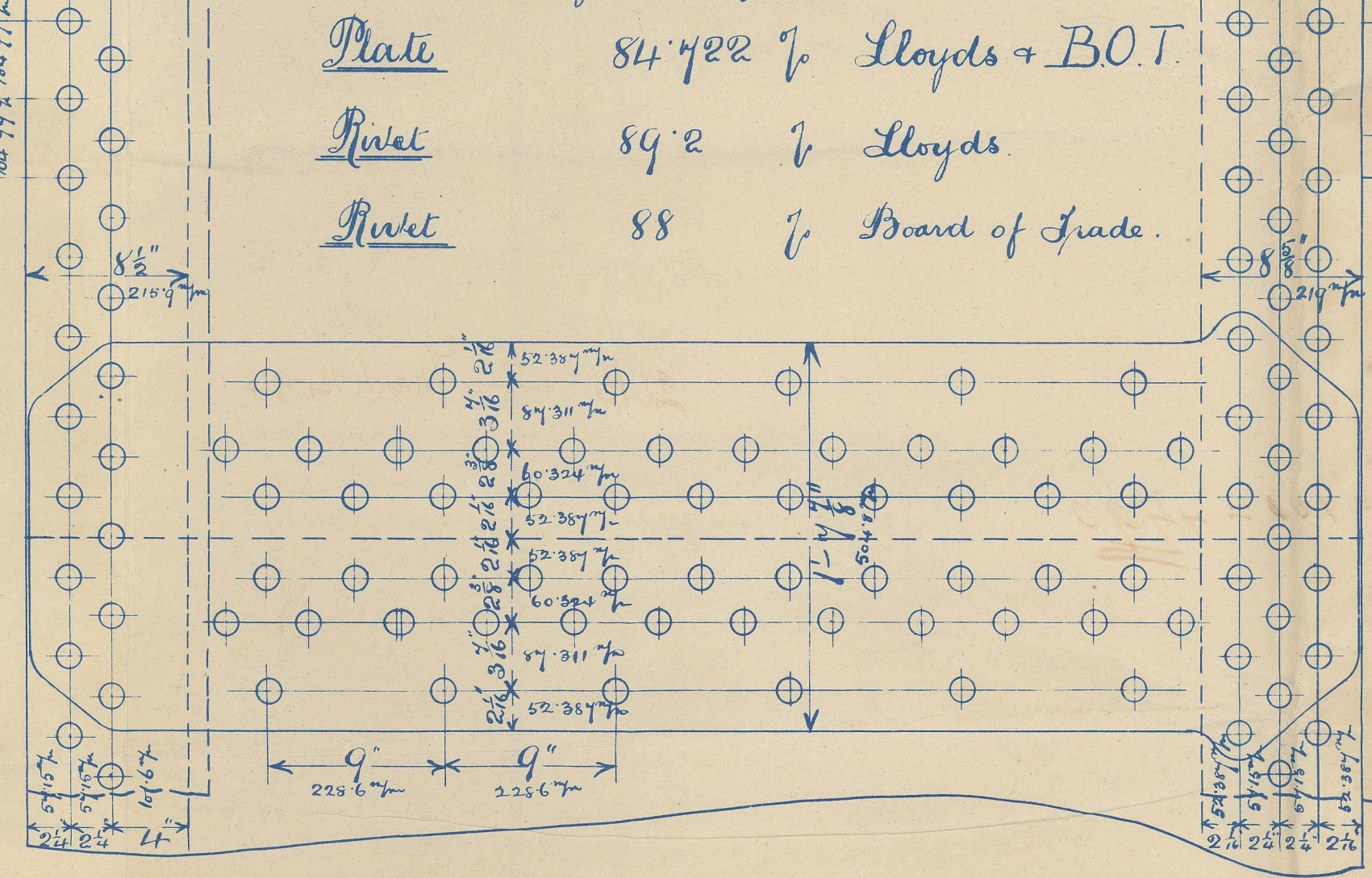
Manufactured by Messrs John Spencer & Son

Manhole 16" by 12"
 Doubling 8" by 1 3/8"

Plan of Shell Riveting.

Strength of joint.

Plate 84 1/2% of Lloyds & B.O.T.
 Rivet 89.2 of Lloyds
 Rivet 88 of Board of Trade.



Shell hydraulic riveted throughout
 All Holes drilled in place after bending.
 Shell Plates 1 1/8" thick. Butt Straps 1 1/2" thick
 Rivet Holes 1 3/8" dia. by 9" pitch
 End circumferential seams double riveted
 Rivet Holes 1 3/8" dia. by 4 1/2" pitch.
 Centre circumferential seam triple riveted.
 Rivet Holes 1 3/8" dia. by 4 1/2" pitch.
 Shell Plates - Double strength = 28 tons per sq. inch

Heating Surface. -

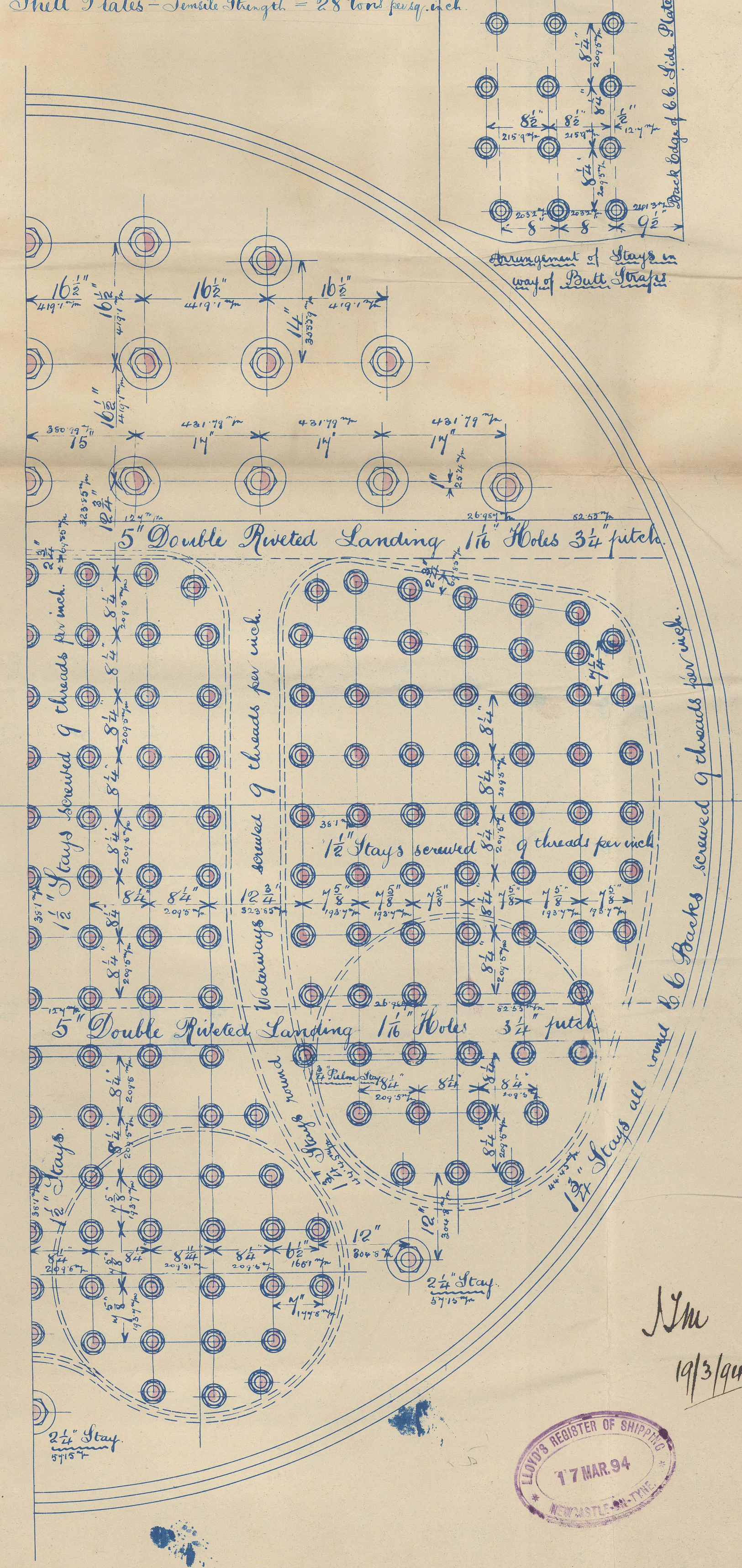
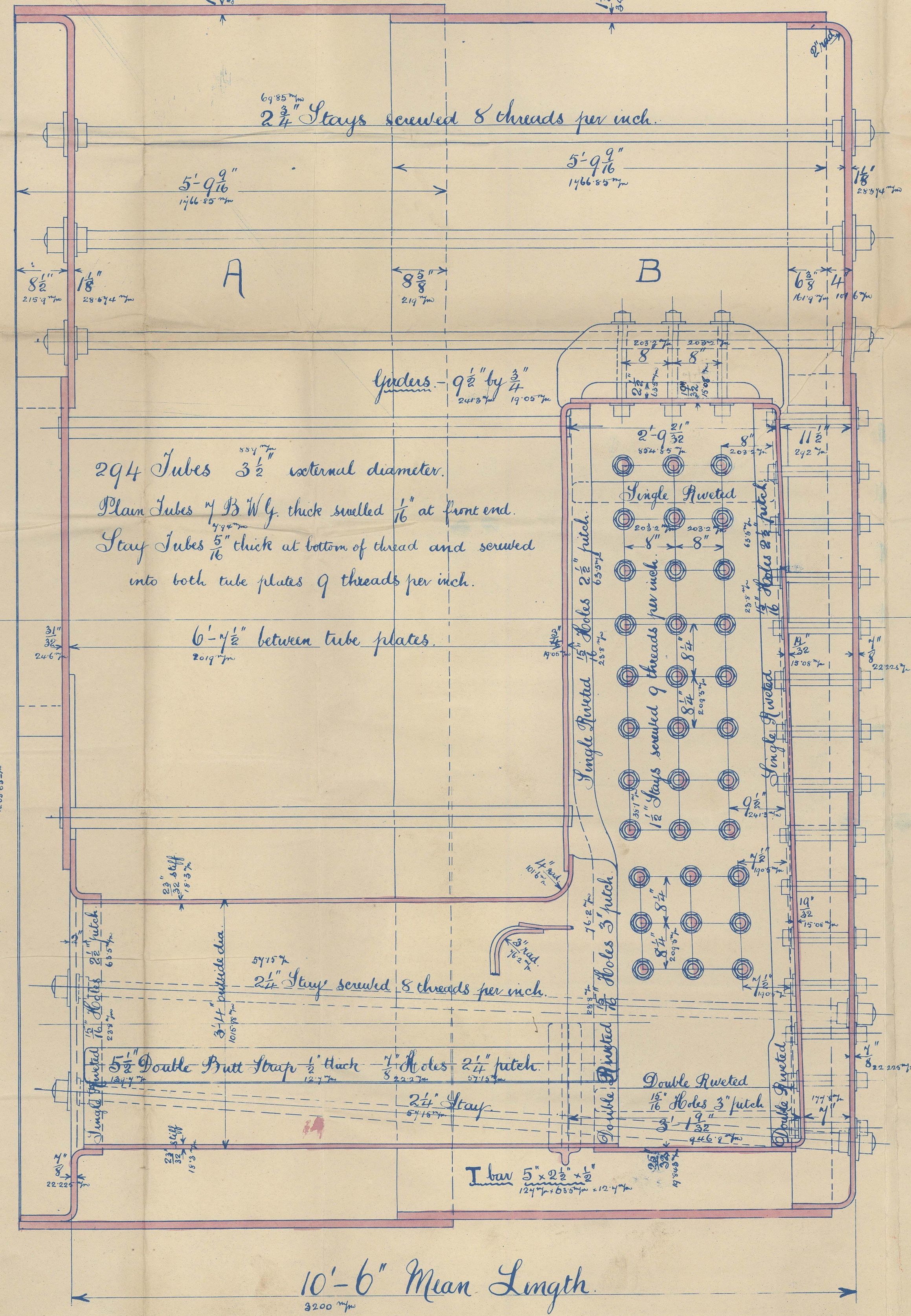
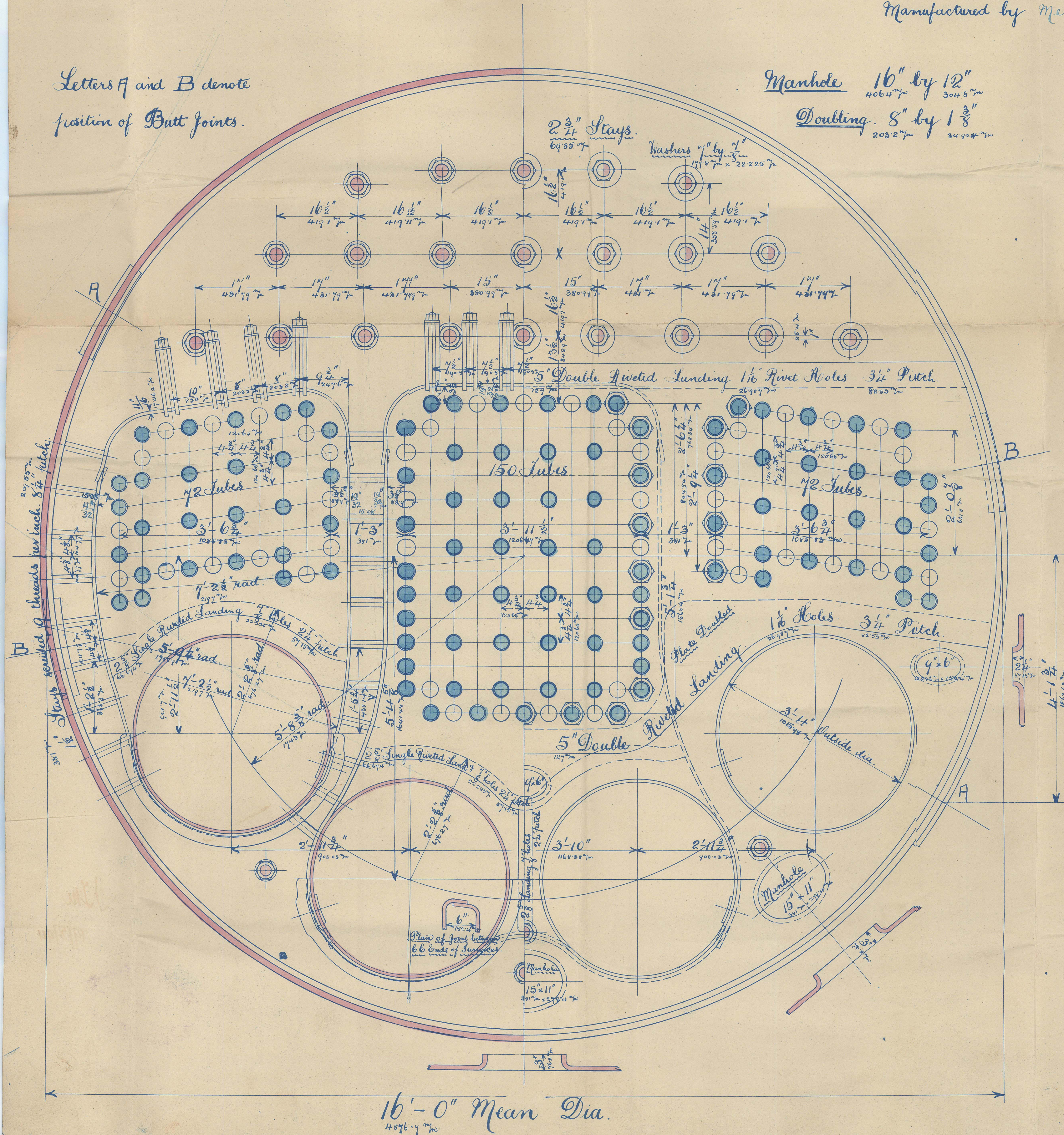
	Sq. ft.	
294 Tubes	1784	165 1/32 sq. in.
4 Furnaces	172	15 1/8 sq. in.
Combustion Chambers	238	22 1/11 sq. in.
Tube Plates	101	9 3/8 sq. in.
Total 1 Boiler.	2295	213.2 sq. in.
do 2 do.	4590	426.4 sq. in.
		less 100 = 4490

Steam Space - 1 Boiler 485 cu. feet. 13 1/33 cu. in.

Working Pressure - 160 lbs. per sq. inch. 11 1/2 atmos.

Test do - 320 " " " " 22 1/4 atmos.

Letters A and B denote position of Butt joints.



17 MAR 94

Messrs Walstead Shipway
& Eng. Coy. Con. 421

~~Type I, on S.B. 647~~
2 main Bcs. ~~105~~

Lloyd's List
No. 4486
320 lbs
28.12.94. J.E.S.

4 plain funnels with 1 single in
double butt strut



fitted on Draw

Sir W Armstrong & Co
s/s Maritta 640 1/2

Nwc F.E. Reg. No. 33039
17/2/96



© 2021

Lloyd's Register
Foundation

NWC846-0008