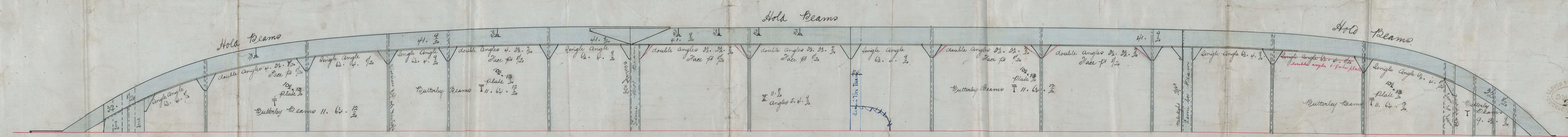
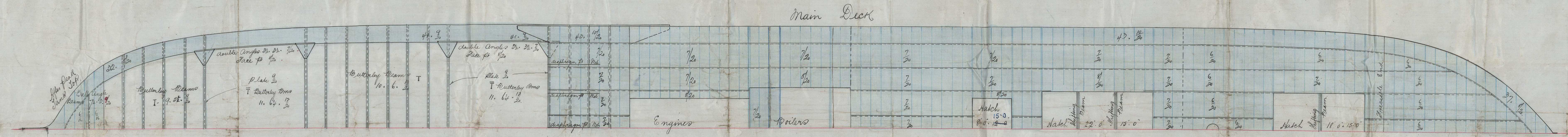
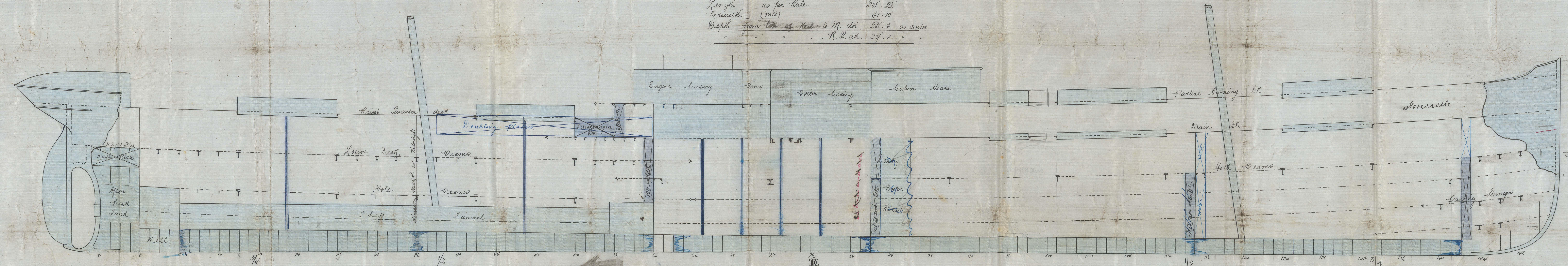




DECK PLAN & PARTICULARS FOR LLOYD'S FREEBOARD No 309

DIMENSIONS

Length	as per rule	201' 2 1/2"
Breadth	(mld)	41' 10"
Depth	from top of keel to M. dk	23' 5" as certd
	" " " " " " " "	" " " " " " " "



JOHN READHEAD & SONS  
Engineers, Boiler Makers  
Iron & Steel Shipbuilders  
SOUTH SHIELDS

PARTICULARS IN FREEBOARD

Length (between perpendiculars)	201' 0"	Clear at Stern Post	3' 5"
Breadth (between)	41' 0"	" " Stern	2' 6"
Depth (marked to Main dk as marked by length)	23' 4"	at 1/2 length of 1st deck	
" of Hold, Cellular bottom is marked	20' 12"	Raised Quarter dk	110' 6" long 4' 0"
C. of Effort of Engines	82	Partial Awning dk	192' 6" long 4' 0"
Tonnage under Main dk to same bottom	2046 tons	Sound of Beams	10 ins
Minimum of keel not covered with wood		Scantlings	100 H.1 special survey

26/2/95



