



30.11.94

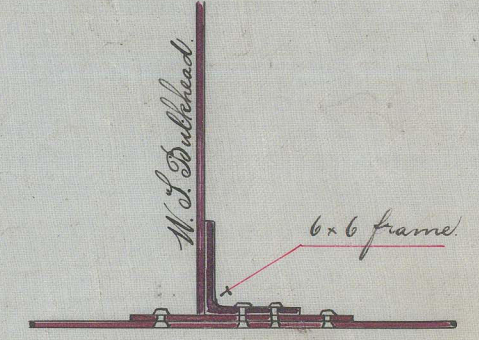
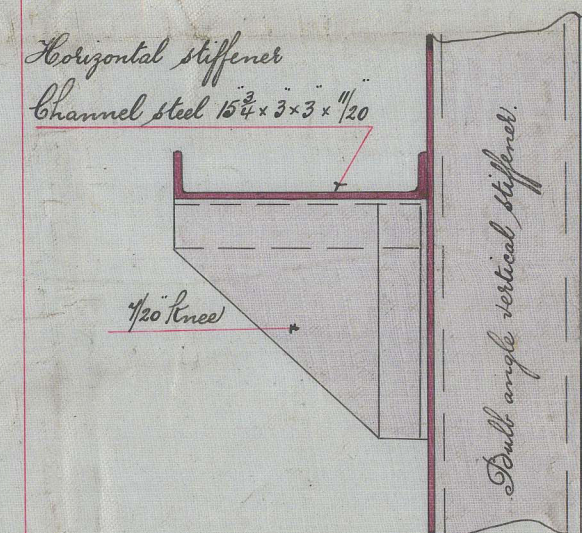
Midship Section of Oil Steamer.
No. 106.
Spar Decked.
Scale 1/2" = 1 Foot.



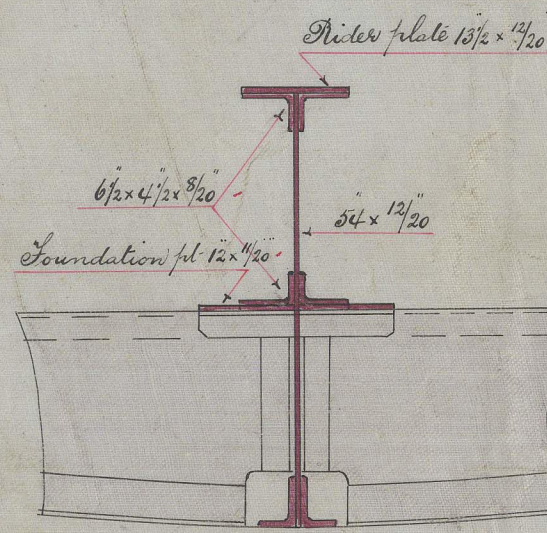
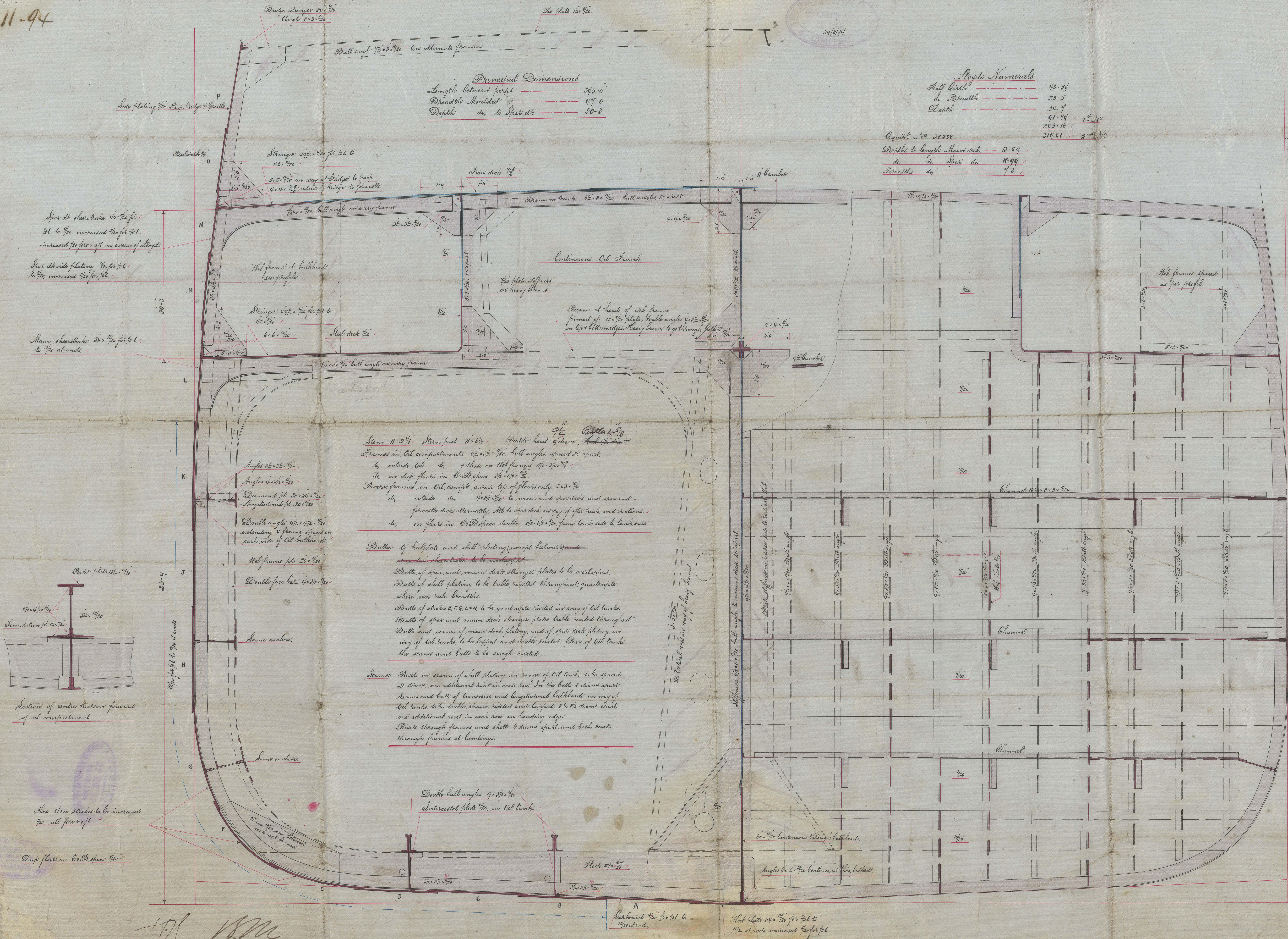
Principal Dimensions
Length between perpendiculars 365-0
Breadth moulded 44-0
Depth do. to Spar deck 30-3

Lloyd's Numerals
Half Girth 43-34
do Breadth 23-5
Depth 30-4
31451 2 1/2 1/2

Equipt No. 38288
Depth to length Main deck 13-89
do do Spar do 10-99
Breadth do 4-3



Longitudinal bulkhead plates 5/16"
Transverse do do 3/16"
do do bottom plate 7/16"
Bulkhead frames 6 x 6" No. double red riveted in each flange.
All keelsons and stringers in Oil compartment to be attached to bulkheads by these plates.



Section of centre keelson forward of oil compartment.

Side three strakes to be increased 7/16" all fore & aft.

Deck floor in Oil space 7/16"

Stem 11-2 1/2" Stern post 11-6 1/2" Rudder head 9" square
Frames in Oil compartments 5/16" x 3/4" No. bulk angles spaced 24" apart.
do outside Oil do + those on Web frames 5/16" x 3/4" No.
do on deck floor in Oil space 3/8" x 3/4" No.
Reversing frames in Oil compartment across top of floors only 3/8" x 3/4" No.
do outside do 5/16" x 3/4" No. to main and spar decks and spar and forecastle decks alternately. All to spar deck in way of after hatch and crutches.
do on floor in Oil space double 3/8" x 3/4" No. from tank side to tank side.

Butts of halfplate and shell plating (except bulwarks) to be overlapped.
Butts of spar and main deck stringer plates to be overlapped.
Butts of shell plating to be triple riveted throughout, quadruple where over rule breadths.
Butts of strakes E, F, G, H, M to be quadruple riveted in way of Oil tanks.
Butts of spar and main deck stringer plates triple riveted throughout.
Butts and seams of main deck plating, and of spar deck plating, in way of Oil tanks, to be lapped and double riveted. Clear of Oil tanks the seams and butts to be single riveted.

Seams: Rivets in seams of shell plating, in range of Oil tanks to be spaced 12" diam, one additional rivet in each row. In the butts 3" diam apart. Seams and butts of transverse and longitudinal bulkheads in way of Oil tanks, to be double chains riveted and lapped, 3 to 3 1/2" diam apart, one additional rivet in each row in landing edges.
Rivets through frames and shell 6" diam apart, and both rivets through frames at landings.

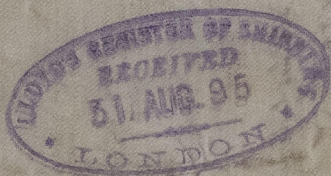
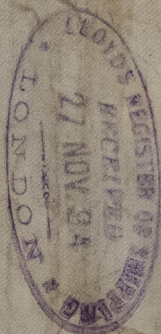
Double butt angles 9 x 3/4" No.
Interstrake plate 7/16" in Oil tanks

Harboard 7/16" No. for 1st to 12th at end.

Shell plate 5/16" No. for 1st to 12th at end, increased 7/16" for 1st.

No. 106

30/11/94



Nº 106

Mid: Section
S.S. Auréole

Nº 32241

Ships



© 2021

Lloyd's Register
NW2843-0045
Foundation