

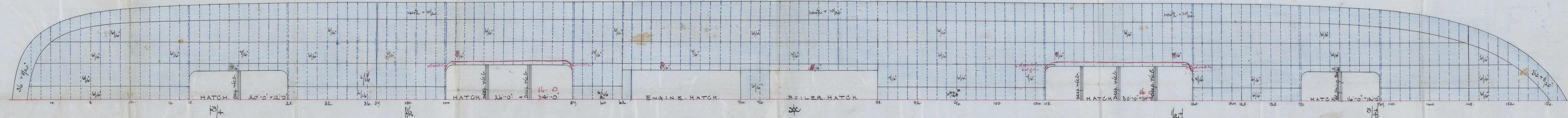
26/2/93
JRB

6.7.93
3.43

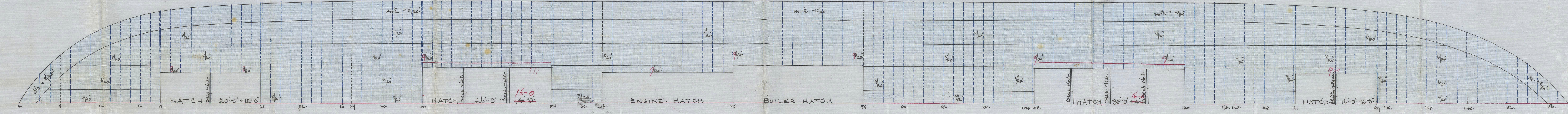
— DECK PLAN STEEL SPAR DECK S.S. N° 200 —

— 315'0" + 41'0" + 26'10" MLD. —

— SPAR DECK —



— MAIN DECK —



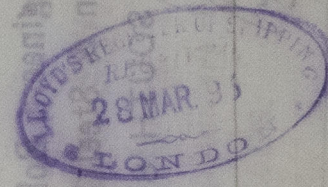
JOHN READHEAD & SONS,
Engineers, Boiler Makers,
Iron & Steel Shipbuilders,
SOUTH SHIELDS.

JOHN READHEAD & SONS,
Engineers, Boiler Makers,
Iron & Steel Shipbuilders,
SOUTH SHIELDS.

No 290
"Laye Romano"

2915 6.

4/2/99



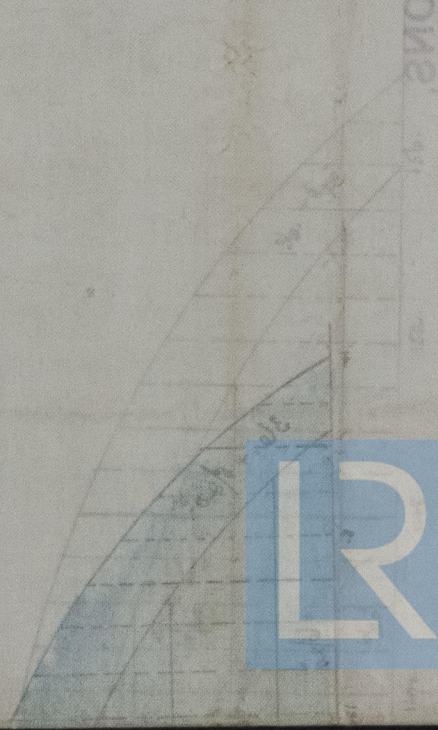
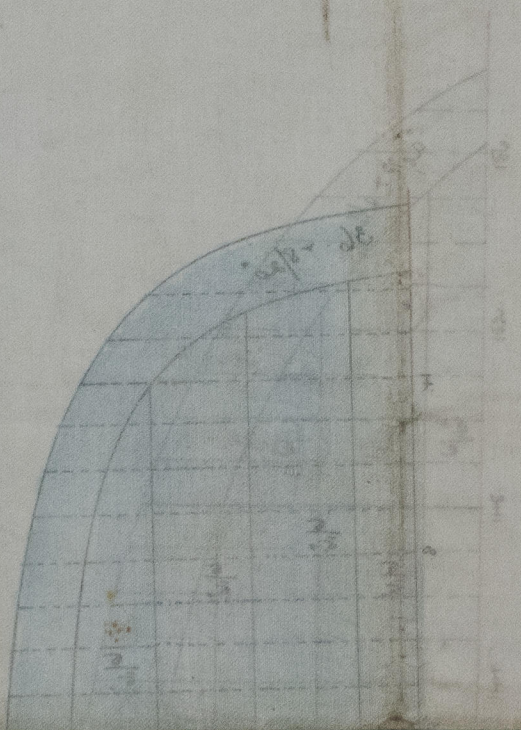
JOHN READHEAD & SONS

Engineers, Shipbuilders, & Iron Works

11, Abchurch Lane, London, E.C. 4

2915 6.

2915 6.



NWC 832-0108

NWC 832-0108



© 2021

Lloyd's Register
Foundation