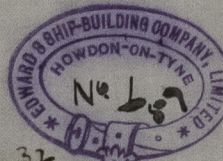


# MIDSHIP SECTION

"Penwell Tower"

S.S. No 57



6/11/90

PROPOSED FREE-BOARD 6'-6"  
FROM TOP OF WOOD DECK  
IF SHEATHED

1/2 GIRTH 37'32"  
1/2 BREADTH 19'95"  
DEPTH 22'58"

1/2 GIRTH = 37'32"  
1/2 BREADTH = 20'00"  
DEPTH = 22'58"  
25179-1005 25179-31533 25179-7990-121N9  
25179-31533 25179-7990-121N9

D. TO L. = 10'44" TO SPAR DECK  
D. TO L. = 13'964" TO MAIN DECK  
B. TO L. = 7'88"

BRIDGE POOP BEAMS = 6 1/2 x 3 x 8/20 BULB ANGLE ALT. FRAMES  
F'CLE BEAMS = BULB 7 x 7/20 & 2 BARS 3 x 3 x 4/20

Side plates of poop bridge of fore castle 7/20

TO CLASS 100.A.1.

## EQUIPMENT

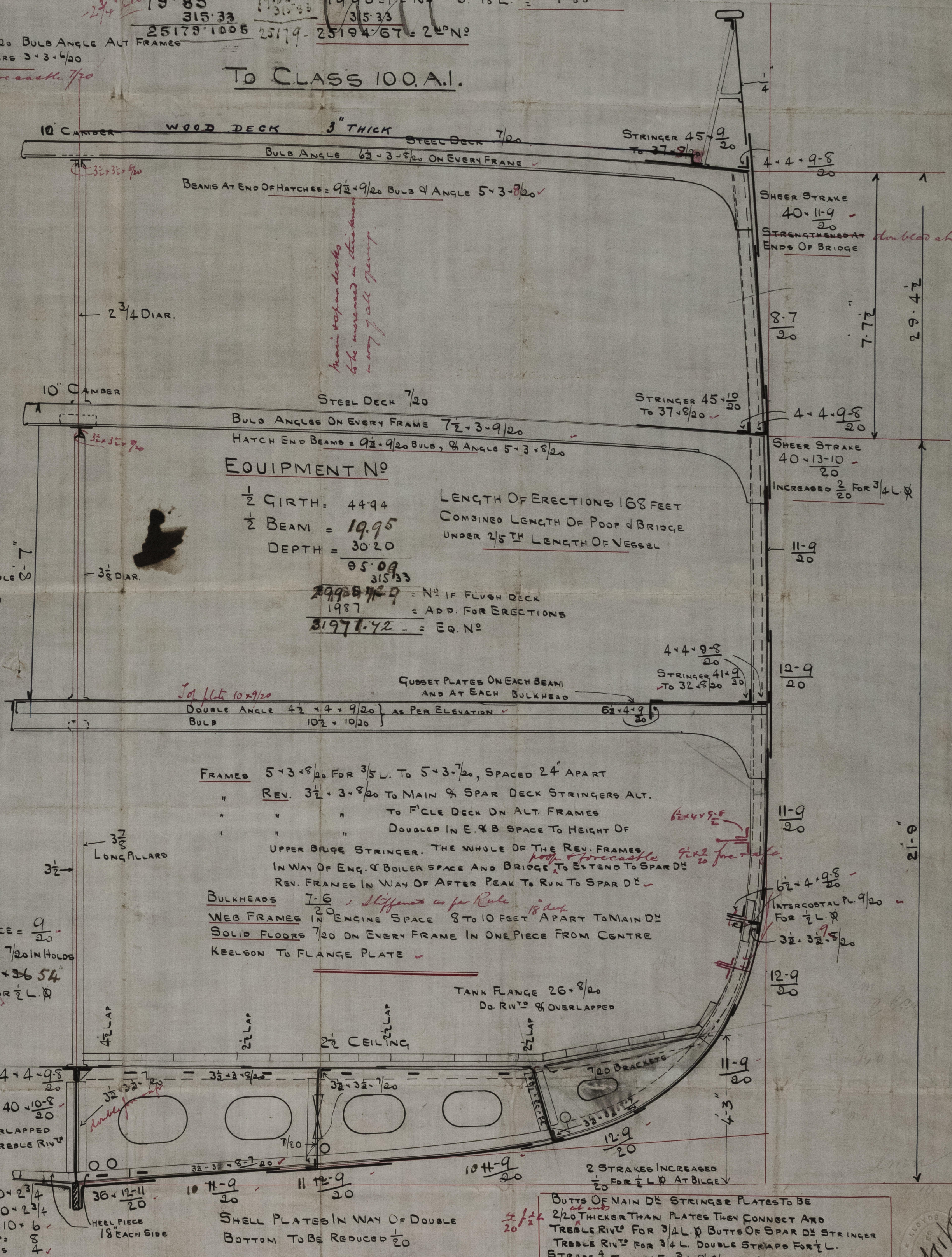
2 BOWERS	36 1/2 CWTs EX. STOCK
1 " "	31 " " "
1 STREAM	11 1/4 " " "
1 KEDGE	5 1/2 " " "
1 " "	2 3/4 " " "
300 FATHOMS	1 15/16 STUO CHAIN CABLE 60
90 "	1 1/2 STREAM CHAIN
100 "	4 TOWLINE
100 "	10 HAWSER
100 "	8 1/2 WARP

## EQUIPMENT No

1/2 GIRTH: 44-94  
1/2 BEAM = 19-95  
DEPTH = 30-20

LENGTH OF ERECTIONS 168 FEET  
COMBINED LENGTH OF POOP & BRIDGE  
UNDER 2 1/2 TH LENGTH OF VESSEL

2998872-9 = No IF FLUGH DECK  
1987 = APP. FOR ERECTIONS  
31971-72 = EQ. No



TANK TOP IN E. & B. SPACE = 9/20  
INNER BOTTOM PLATING 7/20 IN HOLDS  
CENTRE STRAKE 9-8 x 36 5/4  
BUTTS DOUBLE RIVTS FOR 1/2 L. &  
SINGLE AT ENDS

BAR KEEL = 10 x 2 3/4  
STEM = 10 x 2 3/4  
STERN POST = 10 x 6  
RUDDER HEAD = 8  
HEEL & PINTLES 4

SHELL PLATES IN WAY OF DOUBLE  
BOTTOM TO BE REDUCED 1/20

BUTTS OF MAIN DECK STRINGER PLATES TO BE  
2/20 THICKER THAN PLATES THEY CONNECT AND  
TREBLE RIVTS FOR 3/4 L. BUTTS OF SPAR DECK STRINGER  
TREBLE RIVTS FOR 3/4 L. DOUBLE STRAPS FOR 1/2 L.  
STRAPS 1/2 THICKER FOR 3/4 L. 2/20 AT ENDS  
BUTT STRAPS OF SHELL PLATING TO BE TREBLE RIVTS  
FOR 3/4 L. THE BACK ROW OF RIVETS MAY BE SPACED  
FROM 5 TO 5 1/4 DIAS APART  
THE BUTT STRAPS FOR 1/2 L. TO BE 4/20 THICKER THAN PLATES  
AND THE REMAINING STRAPS 2/20 THICKER THAN PLATES  
THEY CONNECT

10/11/90



MIDSHIP

2.2 No

Proposed Free-board  
From top of Wood Deck  
If weathered

27.32

27.32

27.32

27.32

27.32

27.32

27.32

27.32

27.32

27.32

27.32

27.32

27.32

27.32

27.32

27.32

27.32

27.32

27.32

27.32

27.32

27.32

27.32

27.32

27.32

27.32

27.32

27.32

27.32

27.32

27.32

27.32

27.32

Mid: Section

S. S. Benwell Lower  
New Freeboard report

No 26342

EQUIPMENT

Bowers

365 Cwts Ex Stock

" " "

" " "

" " "

" " "

" " "

" " "

" " "

" " "



© 2021

Lloyd's Register  
Foundation