

TELEGRAPHIC ADDRESS.
"BEARDMORE, GLASGOW"

TELEPHONE NO 1356.

LONDON OFFICE,
11 QUEEN VICTORIA ST. E.C.
NEWCASTLE OFFICE,
7 SAINT NICHOLAS BUILDINGS.

Boilers Parkhead Forge, Rolling Mills,
and Steel Works,
Glasgow. 6th March 1891.

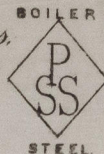
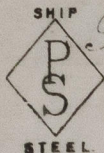
Messrs. Calver & Son Ltd.

Bought of William Beardmore & Co.

Manufacturers of Steel Plates Bars & Rivets (Siemens Process) & Iron Plates Bars &

Rivets for Ships, Boilers, &c. & Marine Engine Forgings of all descriptions.

Iron & Steel Plates flanged for Boiler Fronts &c.



8.11	2	1	748	953	8.12.4	8.1.6	15.1.6	1	9	.	.
7.11	2	2	769		6.1.10	4.3.1.6	13.1.6	.	15	2	8
6.11	2	3	762.4		10.1.1.6	6.6	9.1.6	1	3	3	.
5.11	1	1	738		7.9	6.0	15.1.6	.	13	1	16
4.11	1	1	766		5.9	5.4	9.1.6	.	5	2	20
3.11	2	2	85.6.0		8.3	9.0	3.1.4	2	13	2	8
2.11	8	8	82.871		1.7.1.6	5.9	1.1.6	1	6	.	24
1.11	7	7	82.855		.	6.1.6	"	1	2	2	16
10.10	7	7	806.871		.	5.8.1.6	"	1	.	3	.
9.10	2	1	833		7.0	3.5	9.1.6	.	4	2	.
8.10	2	.	838		6.7	.	.	.	8	1	8
7.10	2	2	818.894		17.0	7.1.6	7.1.8	3	6	.	16
6.10	1	1	862		6.1.1.6	6.6	9.1.6	.	11	2	24
5.10	1	1	874		8.13.1.6	8.1.6	15.1.6	1	9	2	8
4.10	2	2	24.76		8.3	6.8.1.6	"	2	6	1	24

40 On C.R. 1.0.0.0. on 1.0.0.0.

1.0.0.0. 36.846. 76.39. 10.97.

$\frac{2}{45}$ 4 Rl. 4 4 1 16

$\frac{6}{48}$ 33 " 14 9 3 16

Surveyor to Lloyd's Register

70/3/11



© 2021

Lloyd's Register
Foundation

NWC822-0137