

TELEGRAPHIC ADDRESS.  
"BEARDMORE, GLASGOW"

TELEPHONE NO 1356.

LONDON OFFICE.  
11 QUEEN VICTORIA ST. E.C.  
NEWCASTLE OFFICE.  
2 SAINT NICHOLAS BUILDINGS.

Parkhead Forge, Rolling Mills.  
and Steel Works.  
Glasgow. 29<sup>th</sup> Decem<sup>r</sup> 1890.

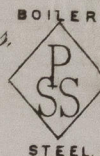
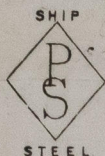
mess<sup>rs</sup>. The Palmer & Co. Ltd.

Bought of William Beardmore & Co.

Manufacturers of Steel Plates Bars & Rivets (Siemens Process) & Iron Plates Bars &

Rivets for Ships, Boilers, &c. & Marine Engine Forgings of all descriptions.

Iron & Steel Plates flanged for Boiler Fronts &c.



26 <sup>th</sup>	6	55 <sup>1</sup> / <sub>2</sub>	✓	SS.	1. 7. 1/4	65 <sup>1</sup> / <sub>8</sub>	1 1/16	1	1	2	.
9	6	50 <sup>1</sup> / <sub>2</sub>	✓			62	.	1	.	.	.
6	8	55 <sup>1</sup> / <sub>2</sub>	✓			60	.	1	6	1	8
7	8	50 <sup>1</sup> / <sub>2</sub>	✓	SS.		57	.	1	5	1	.
38 Q. R. L. Patton on line								4	13	.	8
Dragon No 4111. 5996 3.											

2  
49

*James Caird*  
Surveyor to Lloyd's Register.

9/1/91



© 2021

Lloyd's Register  
Foundation

NWC82V-0170