

TELEGRAPHIC ADDRESS.  
"BEARDMORE, GLASGOW"

TELEPHONE NO 1356.

LONDON OFFICE,  
11 QUEEN VICTORIA ST. E.C.  
NEWCASTLE OFFICE,  
2 SAINT NICHOLAS BUILDINGS.

Parkhead Forge, Rolling Mills,  
and Steel Works.  
Glasgow. 18

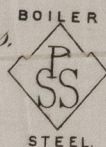
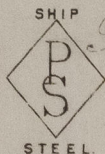
Wm. Palmer & Co. Ltd.

Bought of William Beardmore & Co.

Manufacturers of Steel Plates, Bars & Rivets (Siemens Process) & Iron Plates, Bars,

Rivets for Ships, Boilers, &c. & Marine Engine Forgings of all descriptions.

Iron & Steel Plates flanged for Boiler Fronts &c.



211863	1	144	y. 11 1/2	88 1/2	9/4	1	y	2	12
4	3	130	y. 4	68	7/8	2	.	1	.
7	3	131 1/2	y. 9	57	45	9/16	1	13	16
6	1	136	y. 9	68	.	.	11	2	20
R	1	140	y. 0	57 1/2	.	.	y	1	8
V	4	137	y. 9	57	15 1/16	1	4	2	8
X	1	127	y. 0	30	.	.	6	1	.
3	2	139 1/2	y. 11 1/2	66 1/2	7/8	2	17	2	16
6	2	138 1/2	y. 8	57	45	.	1	1	2 20
7	4	135 1/2	8. 0	45	13 1/16	1	15	1	8
U	1	85	y. 9	65	9/16	.	10	2	.
R	3	107	y. 0	35	.	.	13	.	8
S	1	107	6. y	.	.	.	4	.	12
Y	2	110	6. 1/2	.	.	.	y	.	24
W	59	Co. C.R.	Engine	9 1/2	18	.	1	12	

Barrow on Clyde.  
Hafren to 480 2. 76 583.

1/56.

Wm. Beardmore  
Surveyor to Lloyd's Register.  
24/2/91

NW 6821-0169



© 2021

Lloyd's Register  
Foundation