

TELEGRAPHIC ADDRESS.  
"BEARDMORE, GLASGOW"

TELEPHONE NO 1356.

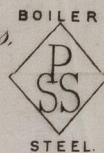
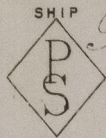
LONDON OFFICE.  
11 QUEEN VICTORIA ST. E.C.  
NEWCASTLE OFFICE.  
2 SAINT NICHOLAS BUILDINGS.

Parkhead Forge, Rolling Mills  
and Steel Works.  
Glasgow. 19th Feb 1891

Messrs. James W. B. & Co. Ltd.

Bought of William Beardmore & Co.

Manufacturers of Steel Plates, Bars & Rivets (Siemens Process) & Iron Plates, Bars & Rivets for Ships, Boilers, &c. & Marine Engine Forgings of all descriptions.  
Iron & Steel Plates flanged for Boiler Fronts &c.



QTY.	SIZE	QTY.	SIZE	QTY.	SIZE
C	2 248	1 7 1/2	65 3/4	1 1/2	7 1
Q	1	.	62	.	3 1 2
L	2 156 1/4	15 11 1/2	44	13 1/2	1 16 1
N	1 149	7 4	65	7 1/8	12 2
R	2 27 1/3	9 9	63	9 1/2	1 2 3
X	2 194	7 9	27	15 1/2	12 2
N	1 91	7 4	65	7 1/8	12 3 24
L	1 176	15 11 1/2	44	13 1/2	18 12
Q	1 163	11 7	57 45	9 1/2	11
N	1 180	7 0	30	15 1/2	6 1 8
X	1	7 9	27	.	6 1 8
L	2 186	6 1/2	35	9 1/2	7 2 16
Y	1	6 7	.	.	4
R	1 217	9 9	63	.	11 16
P	4 24 1/2	5 3	43 1/2	15 1/2	1 3 1 20

23 C. & K. Engine 9 ft 9 152

station on dyke  
from the 160 66 1/2

5 1 16 1/2 1/2 156  
18 7 19 0 12 139

W. Wood  
Surveyor to Lloyd's Register.

24/2/91



© 2021

Lloyd's Register  
Foundation

NW 821-0188