

TELEGRAPHIC ADDRESS.
"BEARDMORE, GLASGOW"

TELEPHONE No 1356.

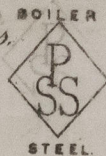
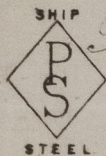
LONDON OFFICE,
11 QUEEN VICTORIA ST. E.C.
NEWCASTLE OFFICE,
2 SAINT NICHOLAS BUILDINGS.

Parkhead Forge, Rolling Mills,
and Steel Works,
Glasgow. 15th June 1891

Messrs. Calvert & Co. Ltd.

Bought of William Beardmore & Co.

Manufacturers of Steel Plates, Bars & Rivets, Siemens Process & Iron Plates, Bars & Rivets for Ships, Boilers, &c. & Marine Engine Forgings of all descriptions.
Iron & Steel Plates flanged for Boiler Fronts &c.



563 1/2 2 1/4 188. 15.0 + 21. 1.4 192.

CURSOR & Engine Works
-ation on - Lyne.
Major in 21490.

7/134.

George Murdoch
Surveyor to Lloyd's Register.

16/6/91



© 2021

Lloyd's Register
Foundation

NWL821-0166