

S.S. "Hornby Grange" Que. Repat No. 23895  
No 238.

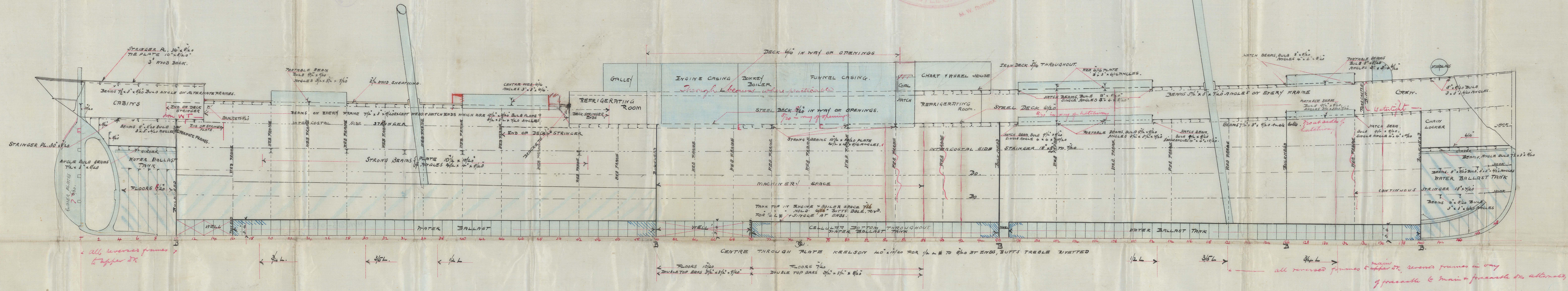
LONGITUDINAL PLAN.

SCALE 1/8" = 1 FOOT

RAISED QUARTER DECKED.

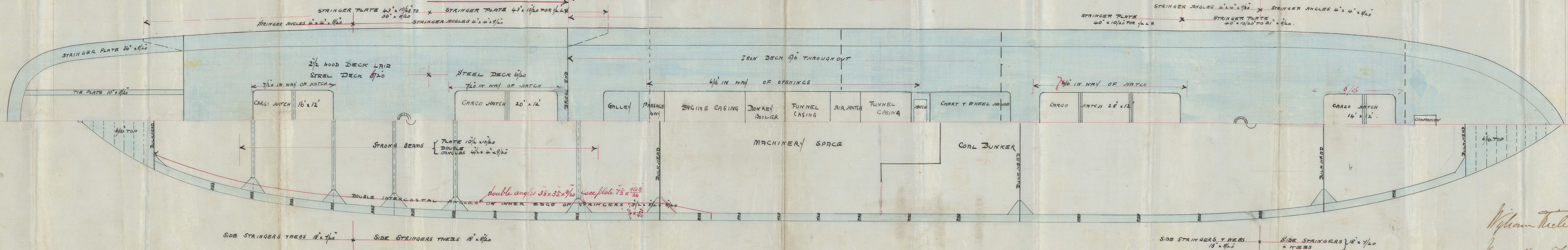


THU 2 MAY 89  
MON 16 MAY 89



PLAN OF RAISED QUARTER DECK

PLAN OF BRIDGE DECK



William Richardson  
Shipbuilders  
Newcastle-on-Tyne  
30 April 89



RECEIVED  
JAN 10 1907

NWC 813-0187

Lloyd's Register  
Foundation