

THU 2 MAY 89
MON 18 MAY 89

Midship Section No 238.

Length between perpendiculars 300'-0"
Breadth Moulded 40'-0"
Depth Moulded 23'-0"

Scale 1/2" = 1 Foot.
To Class 100. A.1. Lloyds.
Raised Quarter Deck
Steel Scantlings.

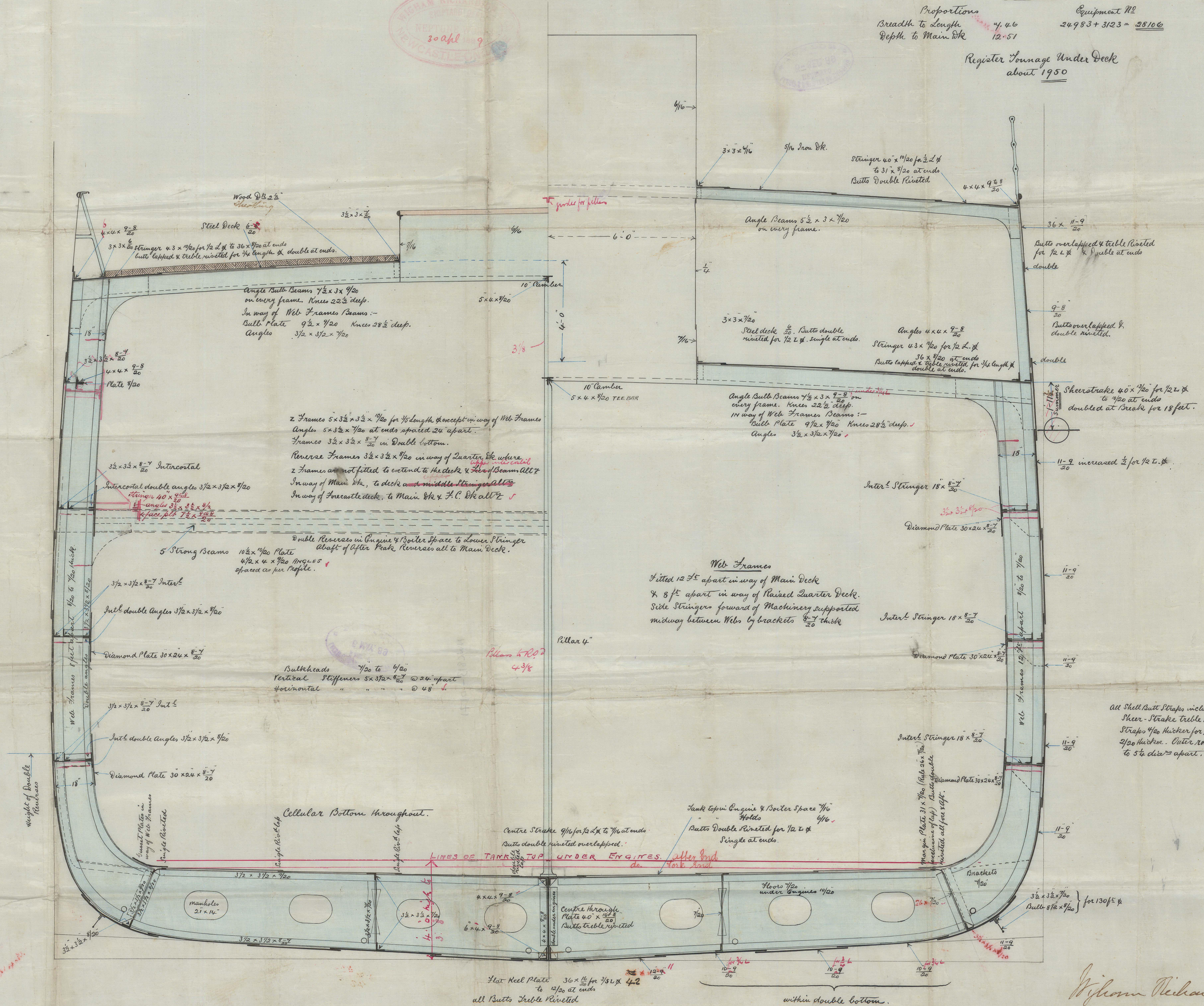
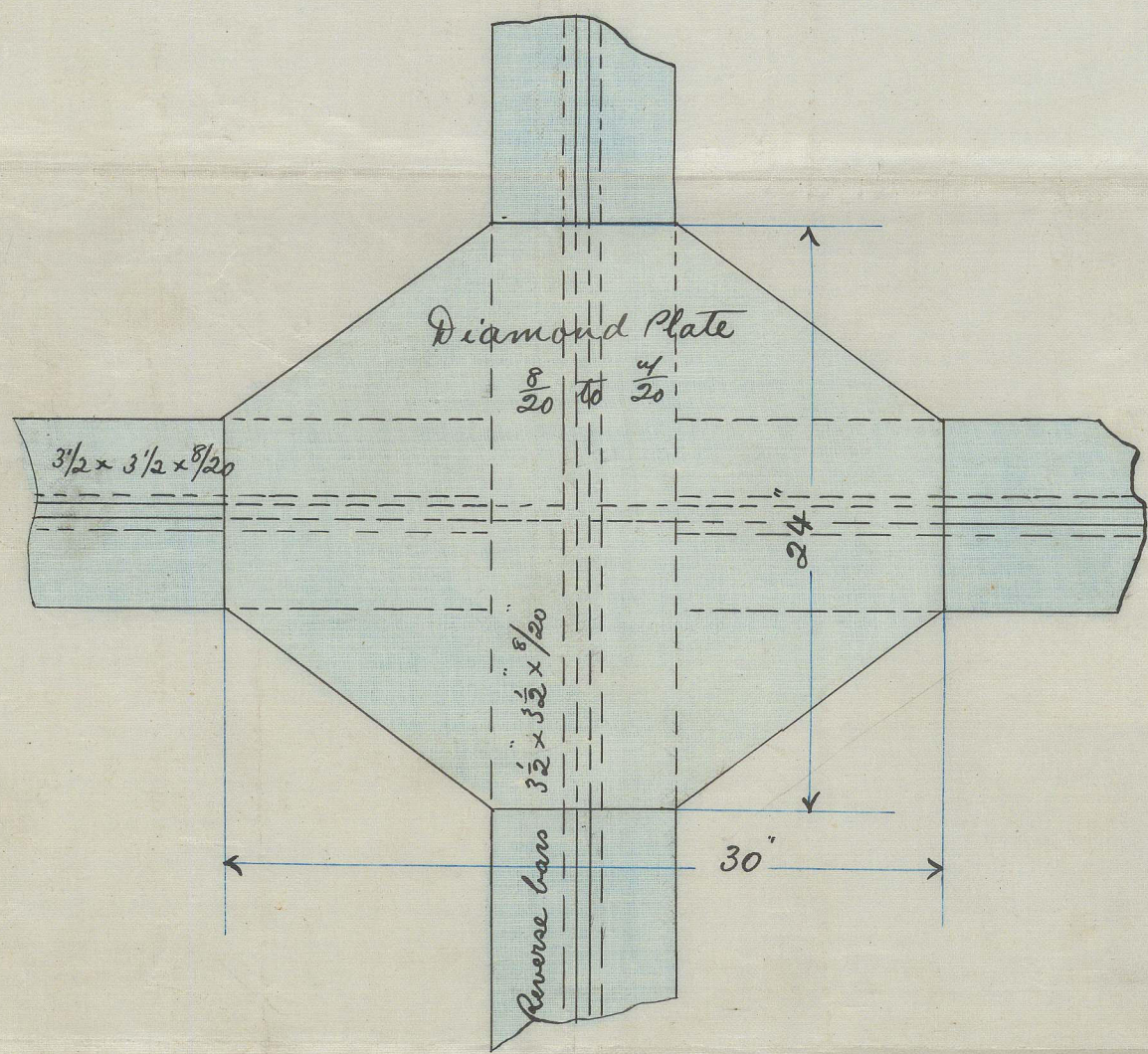
SS Horby Grange
Nov. 23895.

Lloyds No.
1/2 Moulded Breadth 20.0
1/2 Birth 39.91
Depth 23.83
53.744 = 1st No.
298.34
24983.36 = 2nd No.

Proportions
Breadth to Length 1/4.46
Depth to Main Dk 12.51
Equipment No.
24983 + 3123 = 28106

Register Tonnage Under Deck
about 1950

Detail Sketch of Diamond Plate
1/2" Scale



All Shell Butt Straps including Sand & Main Sheer - Strake Triple Riveted for full length & Straps 1/20 Hooker for 1/2 length remainder 3/20 Hooker. Outer row of rivets spaced 5 to 5 1/2 dia apart. Centers.

W. Richardsons
Newcastle on Tyne
30 April 1899.

NWC813-0171

6 MAY. 89

© 2021

Lloyd's Register
Foundation

2 x 4 x 8/50 LEE BUN
10 (over)

Angle 150° - Measure $\frac{1}{2} \times 3 \times \frac{9}{20}$
 on inner frame. Nail 225 kuf.
 In way of 1st of running beam -
 self \times 682. Place $9 \frac{1}{2} \times \frac{9}{20}$ Nail 285 kuf. $\frac{1}{2}$
 Angle 150°
 about to square. 25 51 of distance
 about 20 square. 25 51 of distance

23 x 3 = 69

2 of 25/10 x 25/10
 2 of 25/10 x 25/10
 2 of 25/10 x 25/10

2/10 2000 2/10

$\frac{p}{n} \rightarrow$

at Moscow

NWC813-0171

15/10/1911
 15/10/1911
 15/10/1911

855.07 Walden 1850

53-0
100-0
300-0

1886. Sept 2.

© 2021

Lloyd's Register
Foundation