

TELEGRAPHIC ADDRESS.  
"BEARDMORE, GLASGOW"

TELEPHONE N<sup>o</sup> 1356.

LONDON OFFICE,  
11 QUEEN VICTORIA ST. E.C.  
NEWCASTLE OFFICE,  
2 SAINT NICHOLAS BUILDINGS.

Parkhead Forge, Rolling Mills,  
and Steel Works,  
Glasgow. 26 June 189

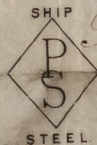
Messrs Wigham Richardson & Co

Bought of William Beardmore & Co

Manufacturers of Steel Plates, Bars & Rivets (Siemens Process) & Iron Plates, Bars &

Rivets for Ships, Boilers, &c. & Marine Engine Forgings of all descriptions.

Iron & Steel Plates flanged for Boiler Fronts &c.



B 238 J 1 319 P 8-6 x 97 <sup>3</sup>/<sub>8</sub> x 1 1 18 3 20  
S 1 91 SS 6-4 x 14 x <sup>1</sup>/<sub>2</sub> 1 2 20

2 Per rail to Newcastle 2 2 12

Mayon 23 918 CR

(<sup>2</sup>/<sub>51</sub>)

J. J. Roberts  
Surveyor to Lloyd's Register

NWC813-0167