

88 100 88
200 lbs

L. Fairbairn
L. Morayshire
Spec Report No 23164
Spec Report No 23887

N^o 287-
293
SHIPS.

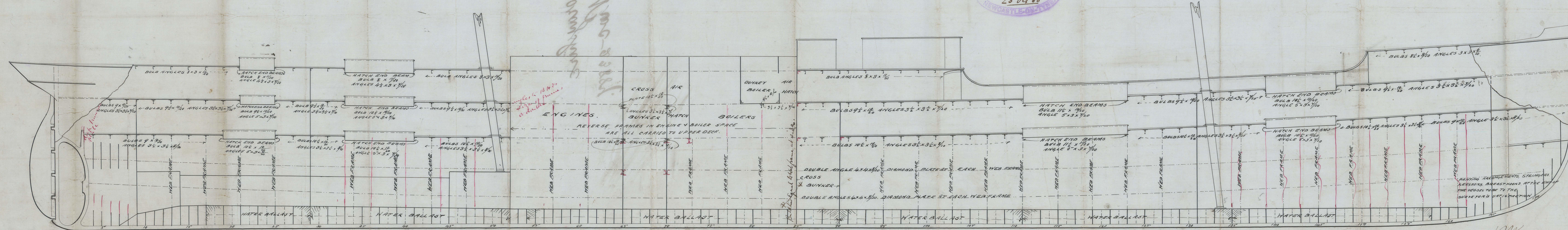
LONGITUDINAL SECTION OF A SCREW STEAMER

TO BE CLASSED 100 A. 1. 3 DECKED STEEL

SCALE 1/8 INCH = 1 FOOT

MON 5 NOV 88

25 Oct 88
NEWCASTLE-ON-TYNE



RECEIVED
29 OCT. 83
L.D.H. 60

287 & 293

MON. 2 NOV 88

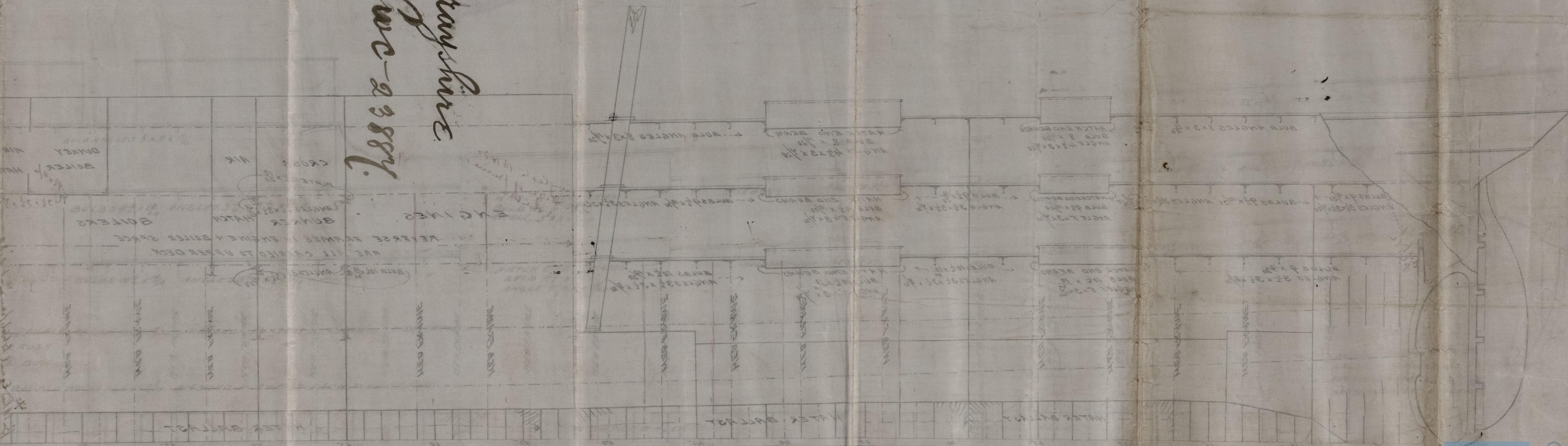
Mr. Manager
The Manager
The Manager

LONGITUDINAL SECTION OF A STEAMER

TO BE CLASSED 100 R. 1. 300000 ST

SCALE 1/4 INCH = 1 FOOT

Morayshire
Nov-23887



© 2021
Lloyd's Register
Foundation
NWC813-0142