

TELEGRAPHIC ADDRESS.  
"BEARDMORE, GLASGOW"

TELEPHONE NO 1356.

NWC810-0271

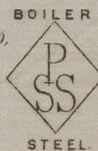
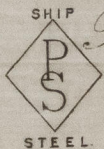
LONDON OFFICE,  
11 QUEEN VICTORIA ST. E.C.  
NEWCASTLE OFFICE,  
2 SAINT NICHOLAS BUILDINGS.

Parkhead Forge, Rolling Mills,  
and Steel Works,  
Glasgow. 23<sup>rd</sup> Feb 1889.

Messrs Higham, Richardson & Co.

Bought of William Beardmore & Co.

Manufacturers of Steel Plates, Bars & Rivets (Siemens Process) & Iron Plates, Bars & Rivets for Ships, Boilers, &c. & Marine Engine Forgings of all descriptions.  
Iron & Steel Plates flanged for Boiler Fronts &c.



12250	2	424	9/65	5	7 1/2	41 3/4	11/16	10	20
B	3	532		5	8 3/4	22 1/8	1/8	12	124
A.C	8	532	532	"		14 7/8	"	1	414
B	2	533		4	"	"	"	5	116
B	1	"		5	8 3/4	22 1/8	"	4	220
B	2	500		4	"	14 7/8	"	5	8
A.B	4	"		5	0 1/4	22 1/8	"	15	1
D	1	138		6	3 1/4	54 1/4	13/16	8	224
no	1	217		7	9 1/2	36 3/4	19/32	5	38
P	2	485		3	3 1/4	15	3/4	2	120
	1	565		"	"	"	"	1	116

27 A.C. 10 Newcastle on Tyne. 4 16 220

Thick no

7925.

1 2e. 1. 1. 16.  
26 " 4. 15. 1. 4

(4/5) (4/7)

Widd  
Surveyor to Lloyd's Register  
23/2/89



Lloyd's Register  
Foundation