

# *St. Bungaroo* N° 235 *New Steel Ship 2308H* MIDSHIP SECTION

**DIMENSIONS**

LENGTH B.T.	335.0
BREADTH MOULDED	41.10
DEPTH MOULDED	28.0

SCALE 1/2 IN = 1 FOOT  
CLTS 100 FT. 1.220 DS. 3 DECK RULE.

**LOYDS NUMERALS**

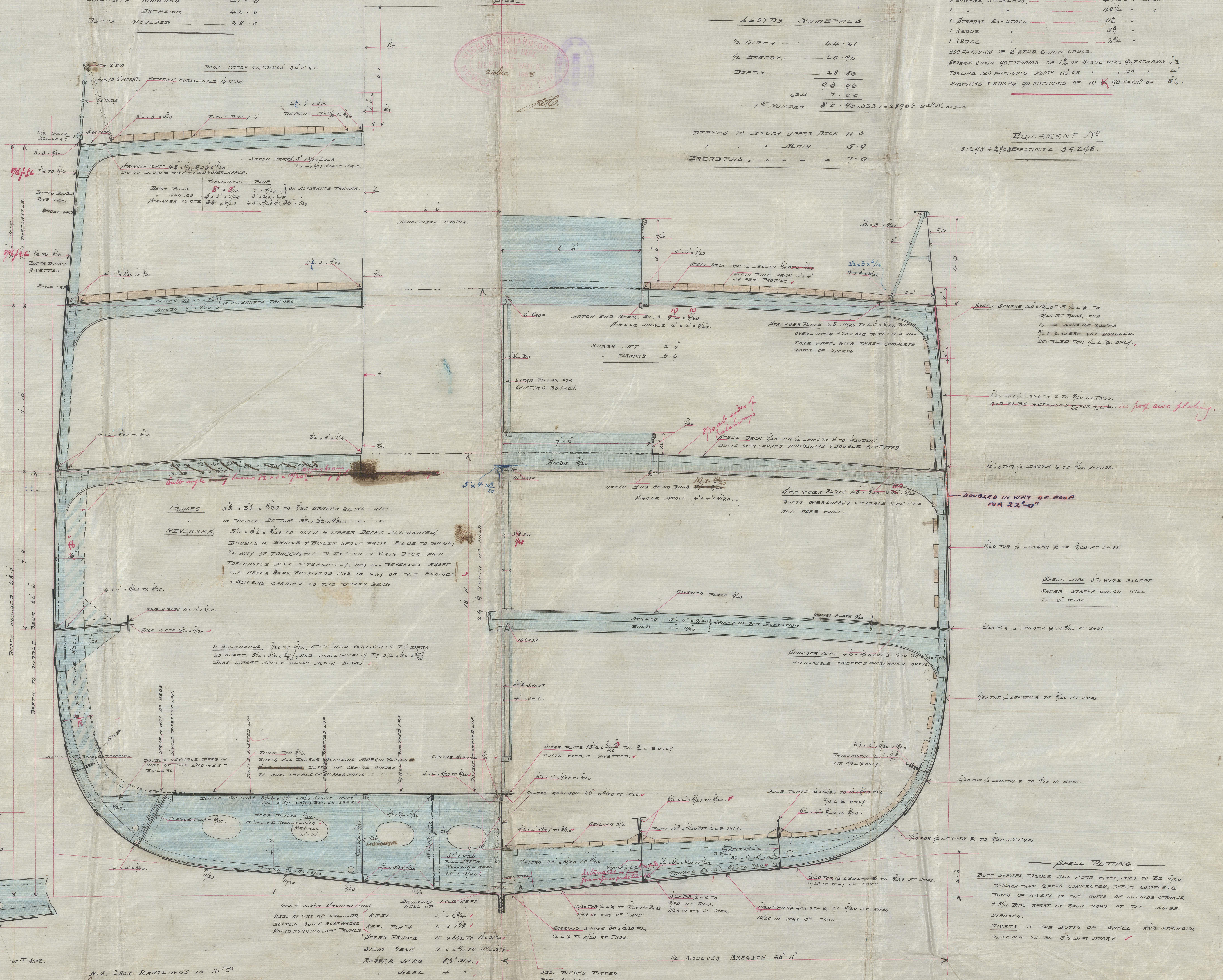
1/2 ORTH	44.21
1/2 BREADTH	20.92
DEPTH	28.83
1/2 ORTH	90.90
1/2 BREADTH	7.00
1/2 DEPTH	80.90

**EQUIPMENT**

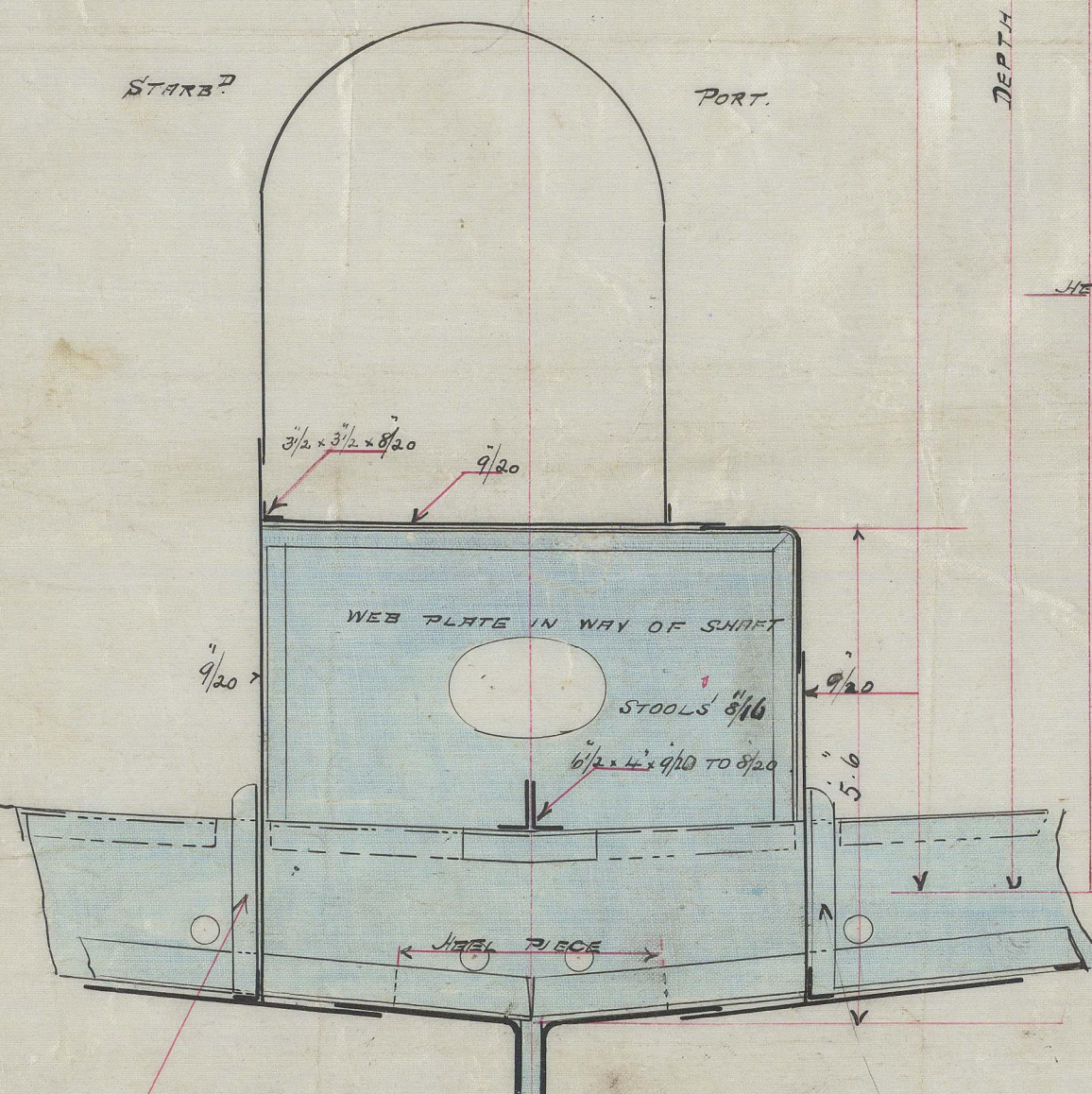
2 BOWERS, STOCKLESS, 4 1/4 CWT EACH.  
1 " " " " 40 1/4 " "  
1 STRAIN EX-STOCK 11 1/2 " "  
1 REDUCE 5 1/2 " "  
1 REDUCE 2 1/4 " "  
300 FATHOMS OF 2" STUD CHAIN CABLE.  
STEAM CHAIN 90 FATHOMS OF 1 1/2" OR STEEL WIRE 90 FATHOMS 4 1/2".  
TOWLINE 120 FATHOMS HEMP 12" OR " 120 " 4"  
HAWKERS 1 WARD 90 FATHOMS OF 10" 90 FATHOMS OF 8 1/2".

**EQUIPMENT N°**  
31298 + 248 ERECTIONS = 34246.

DEPTH TO LENGTH UPPER DECK 11.5  
" " " " " " 15.9  
BREADTH " " " " " " 7.9



**SECTION TWO**  
CIVILIAN'S PATENT TUNNEL TANK  
IN AFTER HOLD.

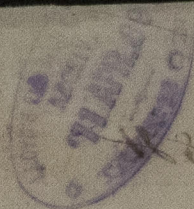


N.B. IRON SCANTLINGS IN 10 THS  
STEEL " " 20 THS  
1/189

**SHELL PLATING**

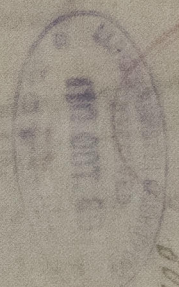
BUTT STAMPS THESE ALL FORT PART, AND TO BE 1/40 THICKER THAN PLATES CONNECTED, THREE COMPLETE ROWS OF RIVETS IN THE BUTTS OF OUTSIDE STAMPS, 1/4" DIA. 3" APART IN BACK ROWS AT THE INSIDE STAMPS.  
RIVETS IN THE BUTTS OF SHELL AND STRINGER PLATING TO BE 3/8" DIA. 3" APART.





SECTION 555

NUMBER 3 CHECK TUBE



LOADS NUMBERS

1. Girth	44.21
2. Brest	20.92
3. Deck	28.83
4. 1st	40.40
5. 2nd	7.00
6. 3rd	80.90

DECK TO LENGTH OVER DECK 11.2

DECK 11.2

EQUIPMENT

SHOWERS STOCKLESS  
1. Girth 44.21  
2. Brest 20.92  
3. Deck 28.83  
4. 1st 40.40  
5. 2nd 7.00  
6. 3rd 80.90

EQUIPMENT No

3128 + 2482 = 5610

