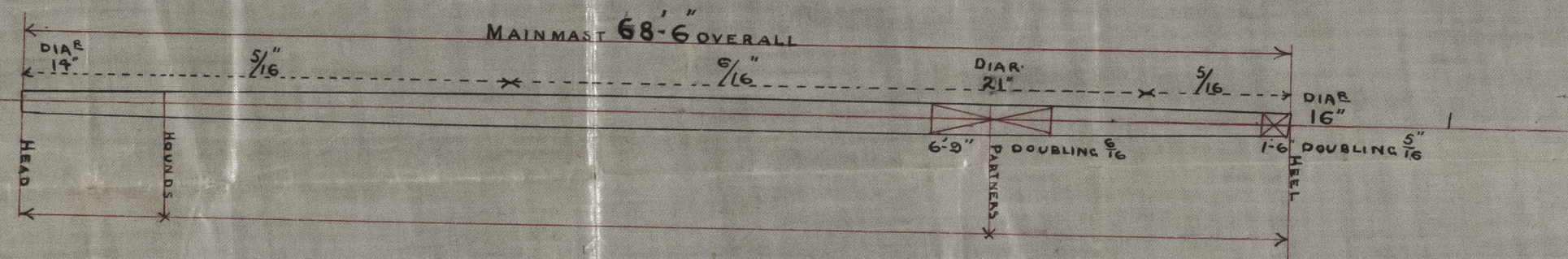
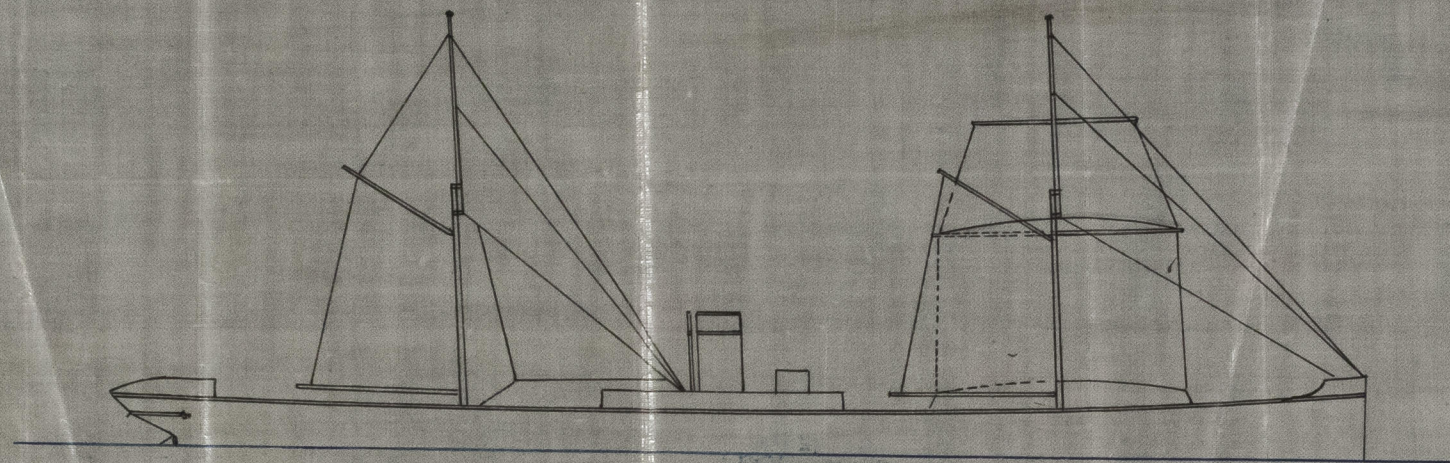


St Polpino Tug Report 123135
 TRACING NO. 542

S.S. No 12

IRON MASTS



MASTS BUILT WITH 2 PLATES TO THE ROUND

BUTTSTRAPS FITTED ON INSIDE $\frac{1}{16}$ THICKER THAN PLATES

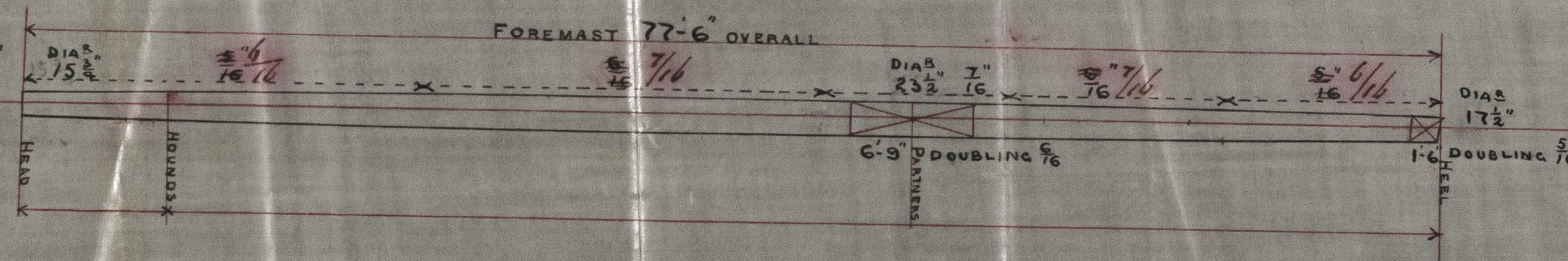
SEAMS OF MASTS BELOW PARTNERS SINGLE RIVETED

" " ABOVE " DOUBLE "

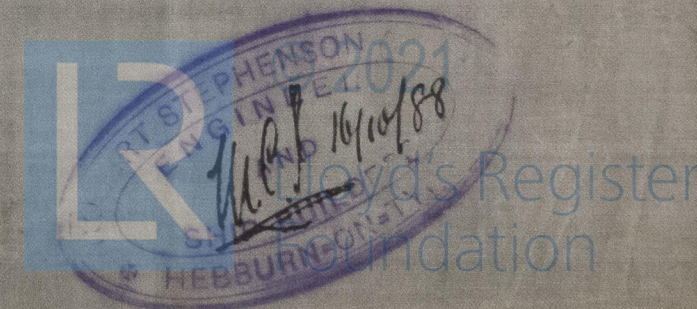
BUTTS OF MASTS TREBLE RIVETED FROM PARTNERS TO HOUNDS

" " DOUBLE " BELOW " ABOVE "

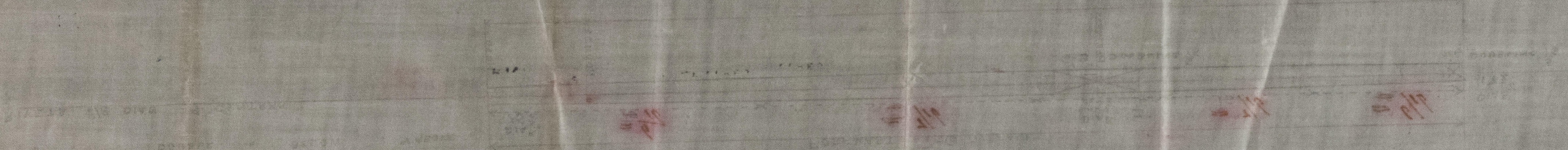
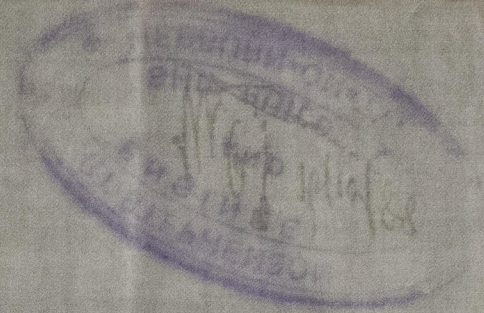
RIVETS $\frac{5}{8}$ DIAM 4" CENTRES



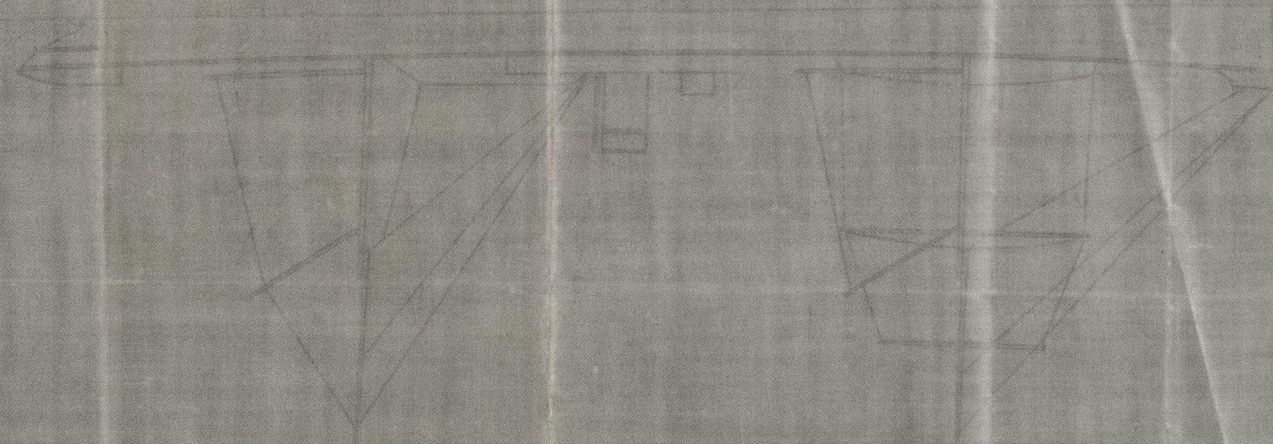
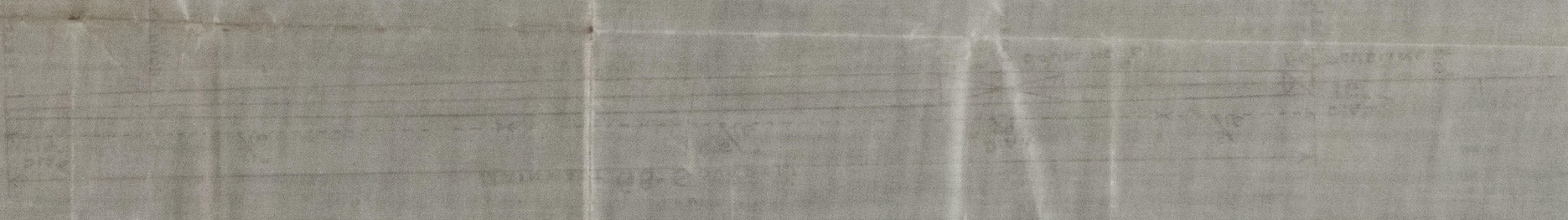
NWC809-0014



4/12



DEPT. OF MARINE ENGINEERING
NWC809-0014
OFFICE OF THE MARINE ENGINEER
UNITED STATES NAVY
NAVY DEPARTMENT
WASHINGTON, D.C.



Handwritten signature and text at the bottom of the page, including 'LLOYD'S REGISTER' and 'FOUNDATION'.