

Rwe Report no 21742

STEEL MASTS

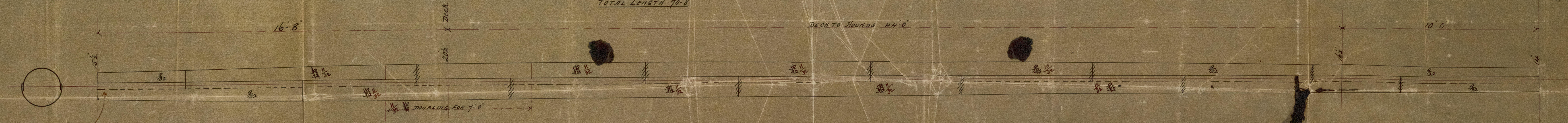
FOR

S. S. N^o 102.

MAIN MAST

TOTAL LENGTH 70'-8"

DECK TO HOUNDS 44'-0"

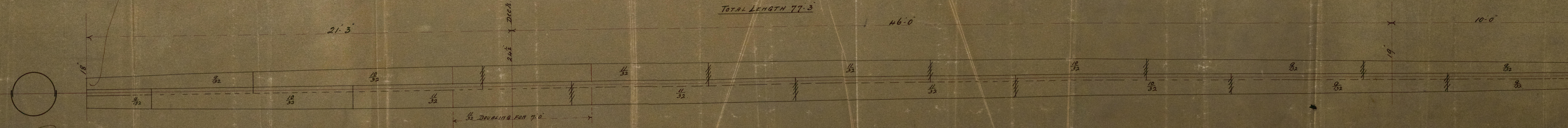


These masts to be especially strengthened at the huls.

FORE MAST

TOTAL LENGTH 77'-3"

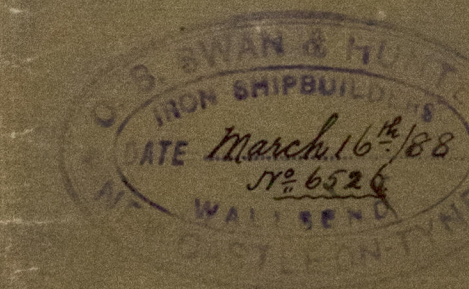
46'-0"



Butts crossed in blue Tiebie Rivetted others double.

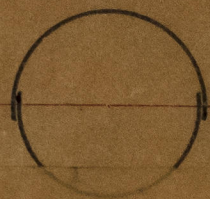
1/8 Rivetting throughout

3/2 Laps Zig-Zag Rivetted



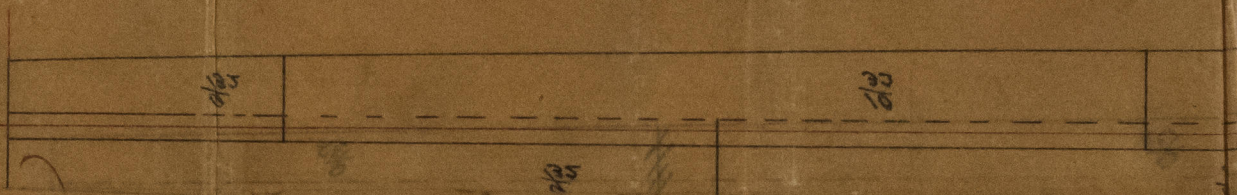
24/3/88

mp/88
P.



NW 801-0271

dr. to Ave
24.3.88



© 2021

Lloyd's Register
Foundation