

Sec. Sm. "Mimosa" Nov. 7. Reboard Repor No. 21170

# MIDSHIP SECTION.

S. S. N<sup>o</sup> 38.

SCALE 1/2" = ONE FOOT.

## DIMENSIONS.

LENGTH BETWEEN PERPS. 255'-0"  
BREADTH EXTREME 36'-0"  
DEPTH MOULDED 19'-3"  
DEPTH OF HOLD TO ORDINARY FLOOR 17'-11"

CLASS 100A LLOYD'S.

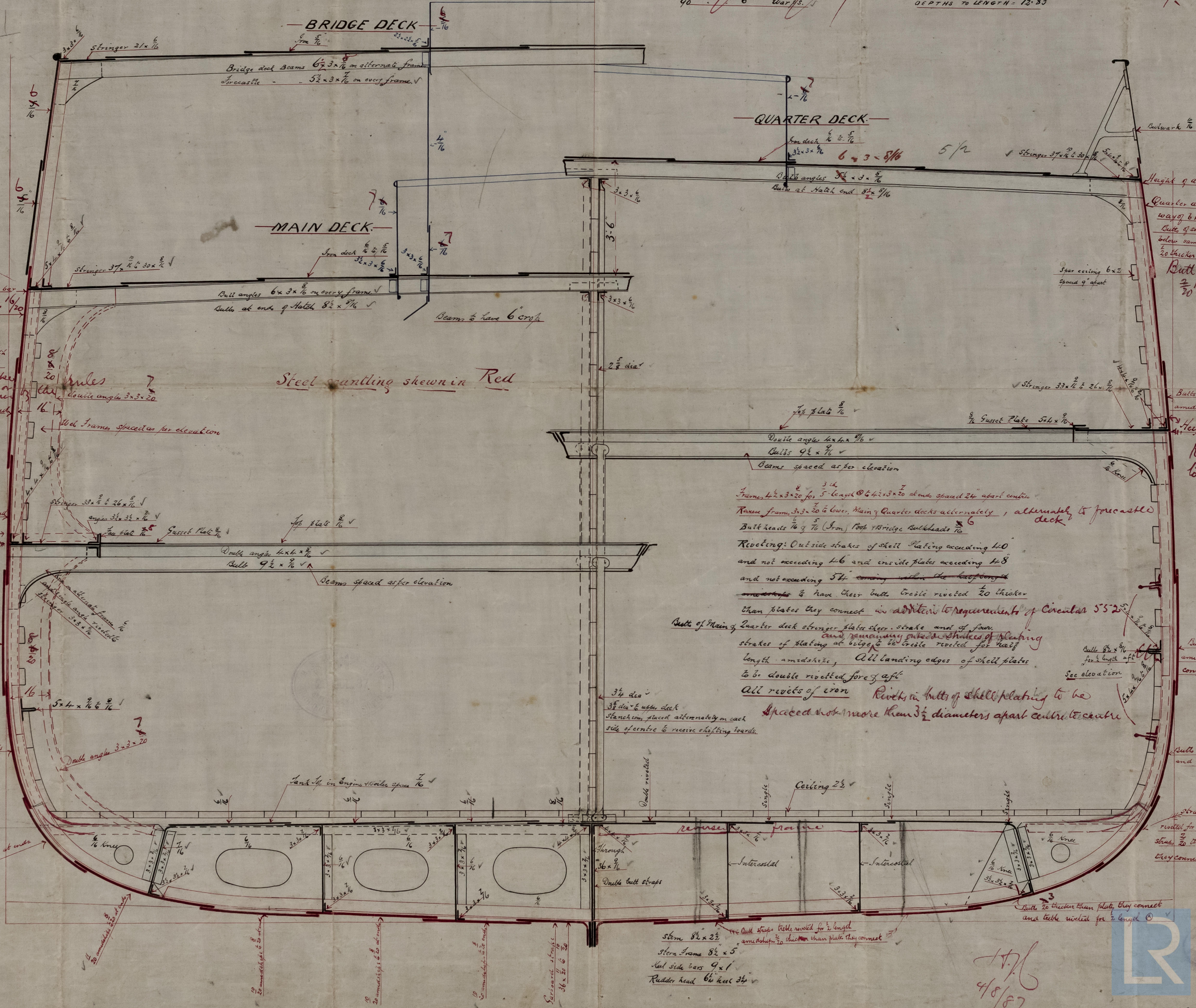
Contract arranged in June.  
18-1 1/2" with round  
of beam as per rule.

## Anchors & Chains.

2 Bowers 25' each  
1 do 21'  
1 Strop 8'  
1 Kedg 4'  
1 do 2'  
2 1/2' of 1 1/2" stud chain cable  
15' " 1" stream sharp  
90 " 10' stem cable or 3/4" steel wire  
90 " 8' Hawser or 3/4"  
90 " 6' Warps

## NUMERALS.

HALF CIRCUM 33.94  
HALF BREADTH 17.57  
DEPTH 19.75  
71.56 + 253.16 = 324.72 PLATING NO. 71.77  
18116 + 1605 = 19721 EQUIPMENT NO. 19804  
BREADTHS TO LENGTH 7.08  
DEPTHS TO LENGTH 12.83



4.8.87.

doubling at front of  
bridge to strengthen

Height of alternate Reverse bar  
12 1/2" = 1 1/2"  
Sheer strake 6" x 2" for 2'  
length amidships to 20' at ends  
increased to 3" for 1/2" length and  
increased on additional 1/2" for 1/2" length  
amidships to 6" each and the strake  
below 2" to 10' doubled as required  
sheerstrake 2" for 2 length 1/2" to 20' for each  
each end to 20' at ends  
= 12 1/2" for 1 1/2"

Reverse frames to extend  
to top of stringer angle

Steel scantling shown in Red

Frames 4" x 3" for 5' length 1/2" x 3" x 20' at ends spaced 24" apart center  
Reverse frames 3" x 2" to 20' Main Quarter decks alternately, alternately to fore-castle  
deck

Butt heads 10' x 7" (from) Top Bridge Bulkheads 10'  
Riveting: Outside strakes of shell plating exceeding 4'0"  
and not exceeding 4'6" and inside plates exceeding 4'8"  
and not exceeding 5'4" coming within the half-length  
amidships to have their butts double riveted 20' thicker  
than plates they connect in addition to requirements of Circular 55-25  
Butts of Main, Quarter deck stringer plate sheer strake and of fore-  
and remaining outside strakes of plating  
strakes of plating at edge to be double riveted for half  
length amidships, All landing edges of shell plates  
to be double riveted fore & aft  
All rivets of iron Rivets in butts of shell plating to be  
spaced not more than 3 1/2" diameters apart center to center  
See elevation

Height of alternate Reverse bars  
Quarter deck sides 20' to 20', 20' in  
way of break  
Butts of sheer strake and of strake above it  
below same to be double riveted in way of break  
to be thicker than plates they connect  
Butt strakes of sheerstrake to be  
20' thicker than plates for 1/2" length

Height of alternate Reverse bar  
Reverse frames to extend  
to top of stringer angles

Butt strake double riveted for 1/2 length  
amidships 20' thicker than plates they  
connect

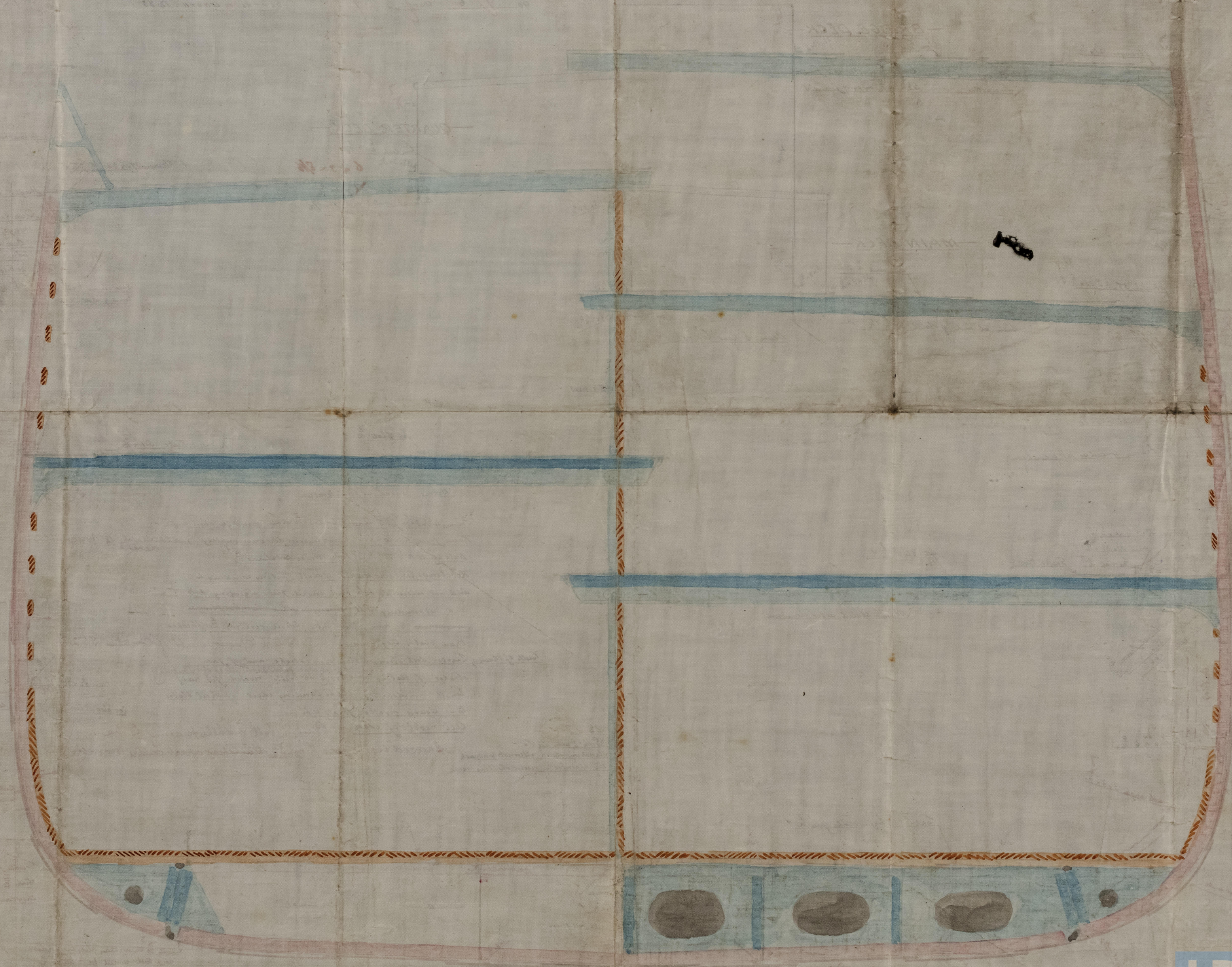
Butts 20' thicker than plates they connect  
and to be riveted for 1/2 length

Strake at edge double  
riveted for 1/2 length & well  
strake 20' thicker than plates  
they connect

Butts 20' thicker than plates they connect  
and to be riveted for 1/2 length



NW 800-0091



MIDSHIP SECTION

2 1/2 x 38

SCALE 1" = 10' 0"

RECEIVED  
3 AUG 87  
21 NOV 87

RECEIVED  
5 MAR 88  
LONDON

1.8.87

RECEIVED  
12 MAR 88  
LONDON