

Nure 20533

JARROW.

January 26/87.

# MIDSHIP SECTION SS N° 582

SCALE 1/2" = ON FOOT.

Forecastle (Iron) 28.0 Long.  
Side Plating 3/8 Iron  
Stringer 20 x 3/8  
Angles 3 1/2 x 3 1/2  
The Plate 1 1/2 x 3/8  
Angle Beams 5 x 3 1/2  
Deck 3 thick.

3.2.87.

Iron 5/16

Iron 5/16

Sheerstrake 36 x 10/20  
to 20 at ends.  
Increased 20 for 1/2 L. &  
Doubled at break  
8 for 1/2 Length &  
20 at Ends.

8 for 1/2 L. &  
20 at Ends.

8 for 1/2 L. &  
20 at Ends.

8 for 1/2 L. &  
20 at Ends.  
Increased 20 for 1/2 L. &  
20 at Ends.

Wood Deck 3"  
The Plate 1 1/2 x 3/8 Iron  
Angle Beams 5 x 3 1/2 Iron On alternate Frames

Stringer Plate 2 1/2 x 3/8 for 1/2 Length &  
to 2 1/2 x 3/8 at Ends Iron

Principal Dimensions.

Length between Posts	210.0
Breadth between Posts	50.0
Depth of Hold (ordinary floor)	15.0
Class 100 ft. depth. Local	
Such parts Iron as allowed by Rules.	

Angles 4 1/2 x 3 1/2 x 20

Stringer Plate 3 1/2 x 3/8 for 1/2 Length &  
to 3 1/2 x 3/8 at ends.  
See Deck Plan

Numbers.

1/2 Girth	28.40
1/2 Breadth	15.00
Depth	16.45
59.85 x 208.83 = 12498	

Plating 1/2" + 13858. Equipment 1/2"

Proportions

Depth in length	12.69
Breadth	5.96

Angles 4 1/2 x 3 1/2 x 20

Stringer Plate 2 1/2 x 3/8 for 1/2 Length &  
to 2 1/2 x 3/8 at Ends

Angles 4 1/2 x 3 1/2 x 20

Note.  
- Buttraps of Stringer Plate. Sheerstrake & 2 Strakes of Plating round the Bilge to be 7/16" thicker than the plates they connect & liable riveted for 1/2 length L. par 15 Section 19 to be complied with.  
Rivets in buttraps of plating & stringers 3/4" dia. or more than 3/4" diameter as per Rules.  
- Bulk 1/2" for 1/2 L. & 20 at Ends.  
- Angles 4 1/2 x 3 1/2 x 20

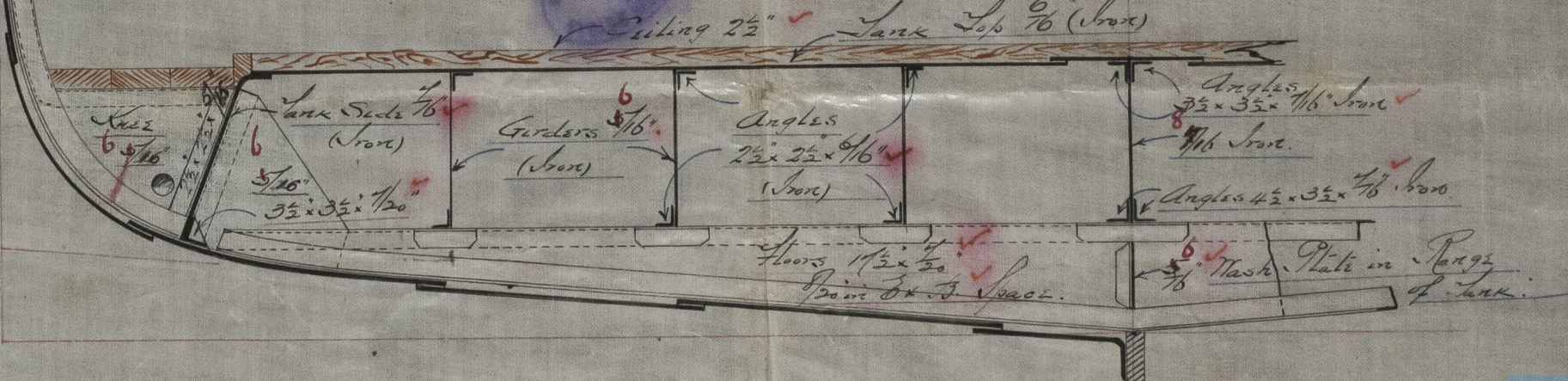
Stim Head 1 x 2 1/2  
Rudder Head 5 x 3  
Bulk 1/2" for 1/2 L. & 20 at Ends  
Stim Frame 1/2 x 4 1/2

Pillars 2 1/2 dia  
Long. 3 dia

Close spaced Beams in Fore Hold.  
Bulk 1 1/2  
Angles 2 1/2 x 2 1/2 x 20  
The Plate 1 1/2 x 3/8

Pillar Plate 1 1/2 x 3/8  
Centre 13 x 20  
Angles 4 1/2 x 3 1/2 x 20

## SECTION IN WAY OF TANK.



18/11/87  
3/2/87  
9/10/87  
19/12/87  
29/4/88



Handwritten numbers and symbols on a piece of paper, including a large '2' and various smaller numbers and symbols.

28 APR 87  
LONDON