

S.S. "Edendale" Swc. Report No. 18532

MIDSHIP SECTION

SCALE 1/2" = 1 FOOT



Ltr. to Mr. 23.1.85.

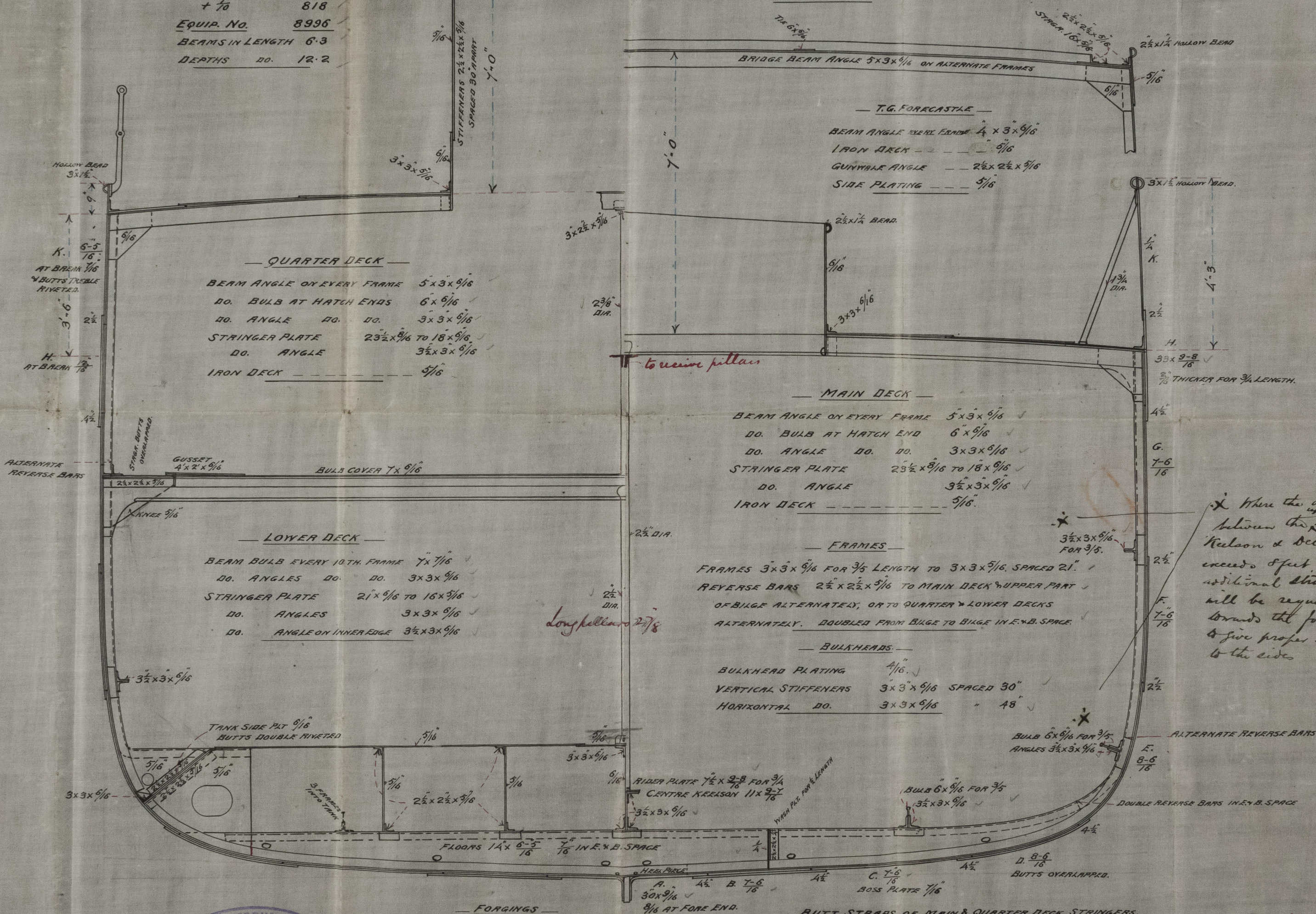
LLOYD'S NOS.

1/2 BEAM	12.93
DEPTH	13.42
1/2 GIRTH	23.55
SMALL NO.	49.9
LENGTH	163.9
LARGE NO.	8178
+ 1/10	818
EQUIP. NO.	8936
BEAMS IN LENGTH	6.3
DEPTHS DO.	12.2

DIMENSIONS

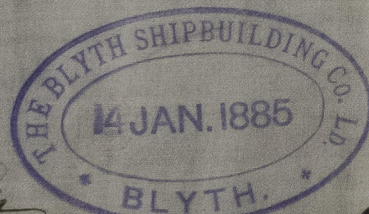
LENGTH BETWEEN PERPS.	165.0
BREADTH EXTREME	26.0
DEPTH OF HOLD	12.3
DO. MOULDED	12.11

CLASS 100A.



Where the distance between the Bulge Keelson & Deck Stringer exceeds 8 feet, an additional stringer will be required towards the fore end, to give proper support to the sides.

Nº 58



See letter to Mr. 23.1.85. J. Matthews

FORGINGS

KEEL BARS	7 1/2 x 1 1/8
STEM	6 1/2 x 1 1/8 TO 6 x 1 1/8
STERN POST	6 1/2 x 3 1/4
RUDDER HEAD	4 1/2 DIA. HEEL 2 1/2

BUTT STRAPS OF MAIN & QUARTER DECK STRINGERS, SHEERSTRAKE & OF D.W.E. STRAKES TO BE 1/16 THICKER THAN PLATES & TREBLE RIVETED FOR 1/2 LENGTH AMIDS.

EQUIPMENT

2 BOWER ANCHORS	10 CWT.	EX. STOCK
1 DO. DO.	8.2	"
1 STREAM DO.	3.3	"
1 KEDGE DO.	1.3	"
1 DO. DO.	0.3	"

195 FMS. 1 1/2" STUB CHAIN CABLE. Stream chain 14 turns & 1/2" per rule.

© 2021 Lloyd's Register Foundation