

Mill Department.
London Office,
11 Queen Victoria St.
E.C.

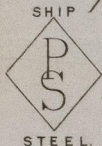
Parkhead Iron & Steel
Forge & Rolling Mills.

Glasgow, 28th Feby. 1884.

Messrs. Palmers Shipbuilding & Iron Works

Bought of J. & W. Beardmore.

Manufacturers of Steel Plates & Bars (Siemens Process) & Iron Plates & Bars for
Ships, Boilers, &c. & Marine Engine Forgings of all descriptions.
Iron & Steel Plates flanged for Boiler Fronts &c.



EW 453a	1 Kg. 823		12.9	52 1/4	7/8	18 . .
"	1 Kg. 870		19.4 1/2	52 1/4	"	1 7 3 12
"	2 Kg. 888, 911, 889		19.0 3/4	"	"	2 14 2 20
"	3 Kg. 847, 791, 837, 793		10.9 1/2	57 1/2	1/2	1 9 1 20
"	838, 794					
"	1 Kg. 257, 838		14.0	62 1/2	25/32	15 3 16
"	3 Kg. 866, 86, 835		7.3 1/2	75	11/16	1 6 3 8
"	81, 837					
"	3 Kg. 810, 868, 835, 785		5.11	48	3/4	19 2 12
"	716, 796					
"	2 Kg. 813, 818, 86, 919		8.0	36	"	13 1 4
"	4 Kg. 863, 86, 864		7.1	76.7 3/4	1/2	1 14 2 12
"	814, 865, 820, 836					
"	4 Kg. 842, 85, 840		15.9 1/2	45 3/4	9/16	2 11 3 8
"	847, 841, 84, 855					
"	2 Kg. 85, 839, 811, 889		6.5	5	"	14 . .
"	2 Kg. 839, 792, 816, 748		4.3	46	1/2	1 16 . 16
"	2 Kg. 816, 748, 839, 792		6.3	"	"	9 . 4
"	2 Kg. 814, 760, 88, 759		7.8	"	"	11 . 24
"	2 Kg. 86, 742, 818, 856		5.0	24	3/4	5 2 24
"	818, 856		"	25	"	3 . 16
57 Per rail to Larrant						17 1 1 .

On trucks Nos. 394, 12192, 6551

(1/14)

(1/20)

Wm Andrews
Sur to Lloyd's Reg^r.
29/2/84



© 2021

Lloyd's Register
Foundation

NWC791-6099