

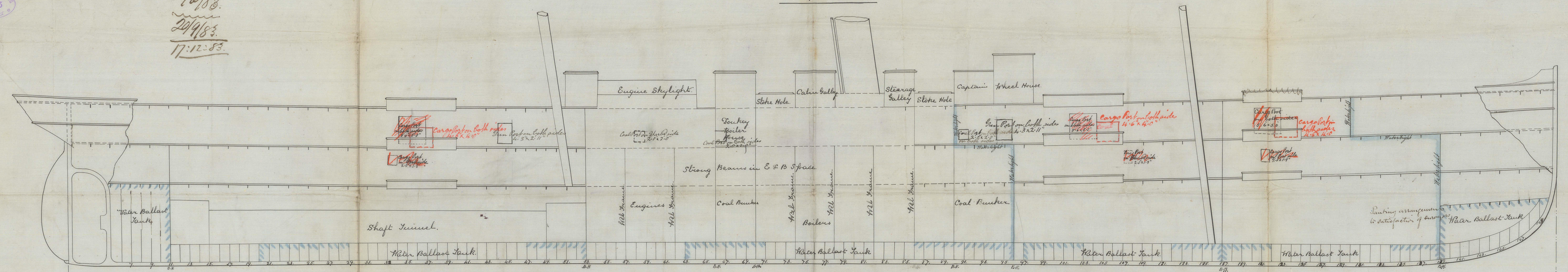
46728
20 SEP 83
12 DEC 83

Let. to me:
11/6/83.
20/9/83.
17/12/83.

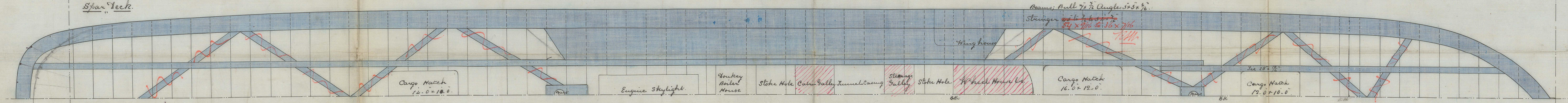
S.S. Omei Maru No. 17654
S.S. Yamashiro Maru No. 17549

LONGITUDINAL SECTION &c. FOR A SPAR DECKED STEAMER.

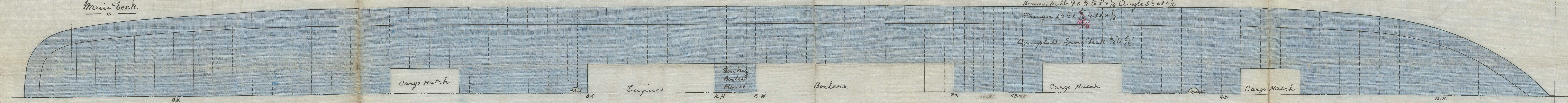
SCALE 1/8 INCH = ONE FOOT



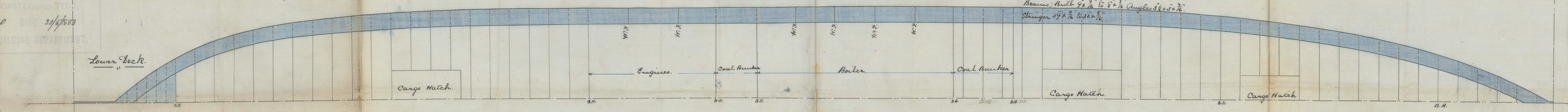
Spar Deck.



Main Deck.



Lower Deck.



W. G. ARMSTRONG, MITCHELL & CO. LTD.
NEWCASTLE-UPON-TYNE
NO 490 DNE 30/7/83
SHIPBUILDING DEPARTMENT.

1/11/83
9/6/83
15/12/83

7/4/83