

21 to Shl  
3/4/83

# BOILER CONTRACT N° 181

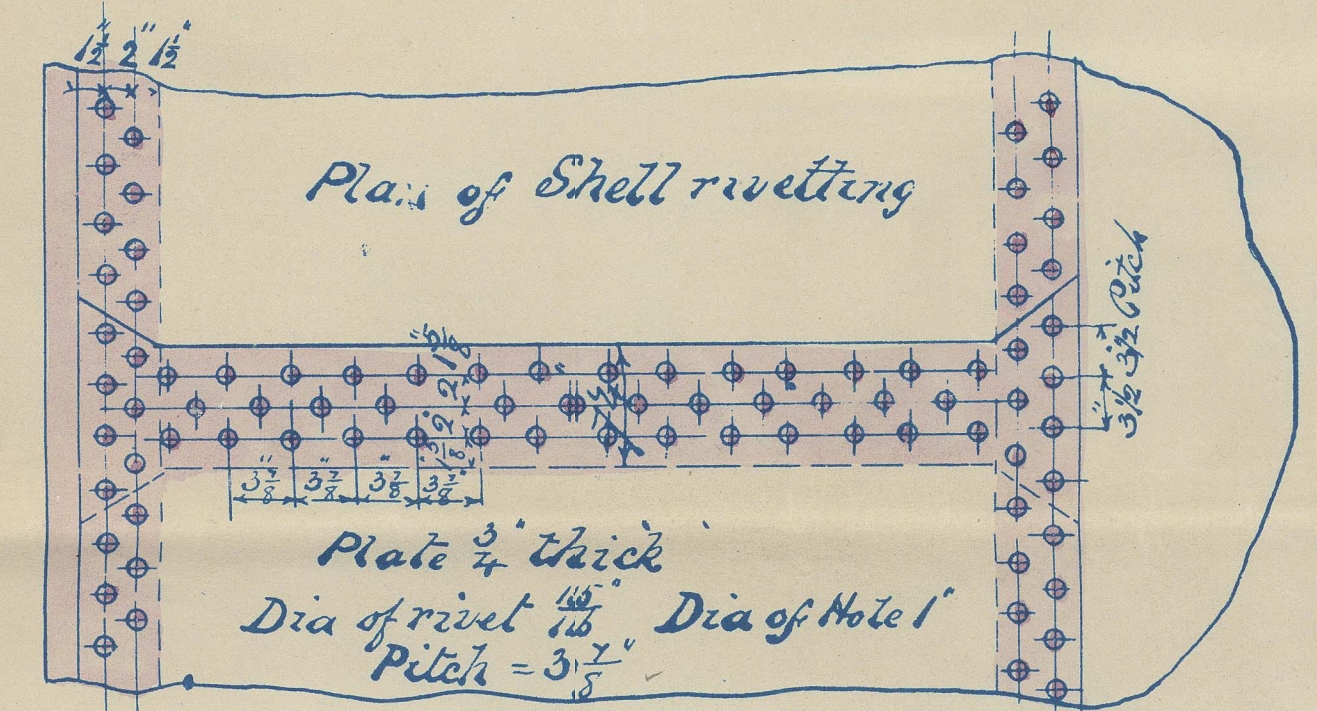
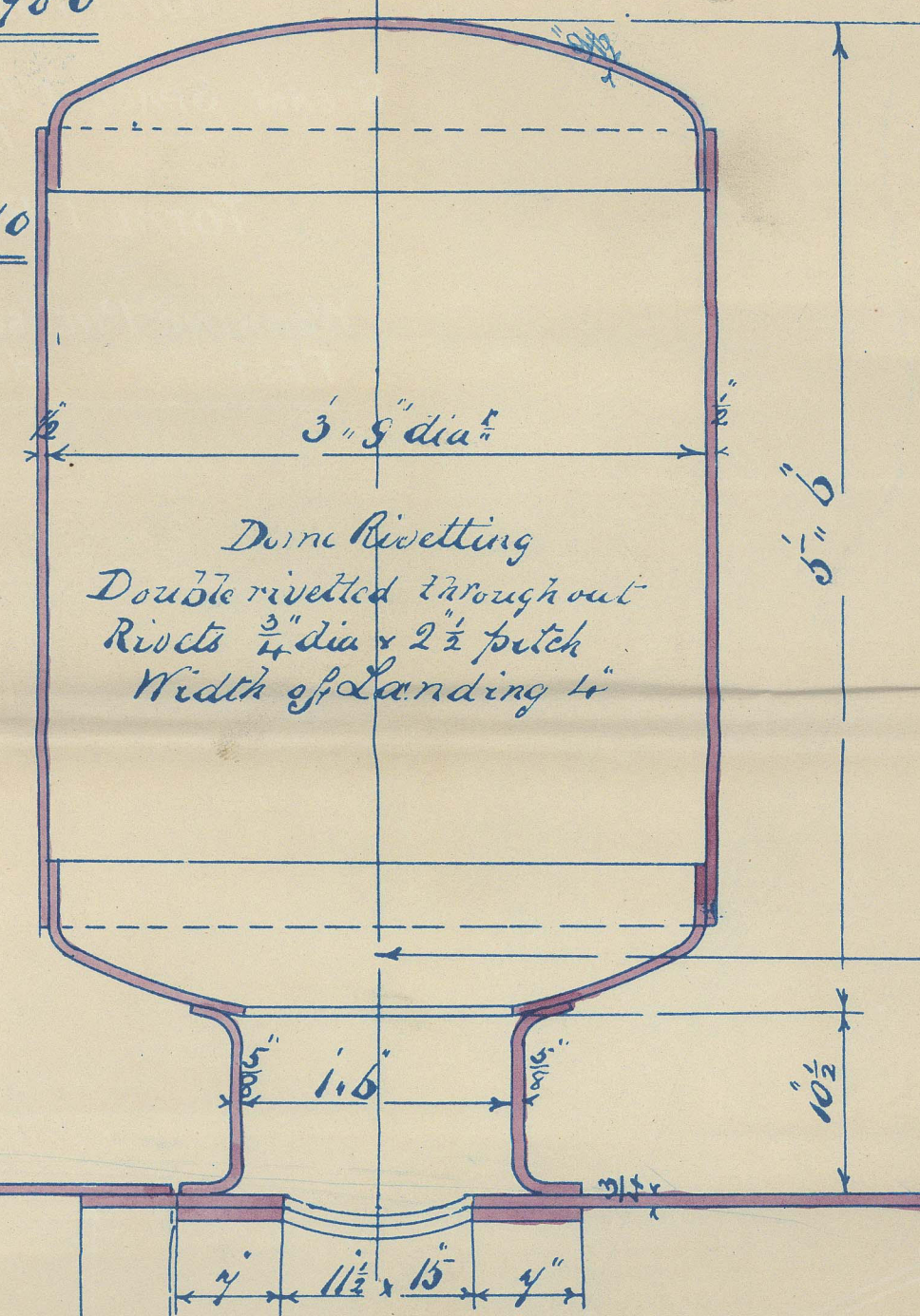
*Missrs J. W. Smiths N° 87 Ship*

Scale one inch = one foot

HEATING SURFACE	Sq Ft
TUBES	= 1200
FURNACES	= 88
COMBUSTION CHAMBERS	= 130
TUBE PLATES	= 72
TOTAL 1 BOILER	= 1490 Sq Ft x 2 = 2980
STEAM SPACE 1 BOILER	Cub Ft
1 DOME	= 325
TOTAL 1 BOILER	= 385 Cub Ft x 2 = 770

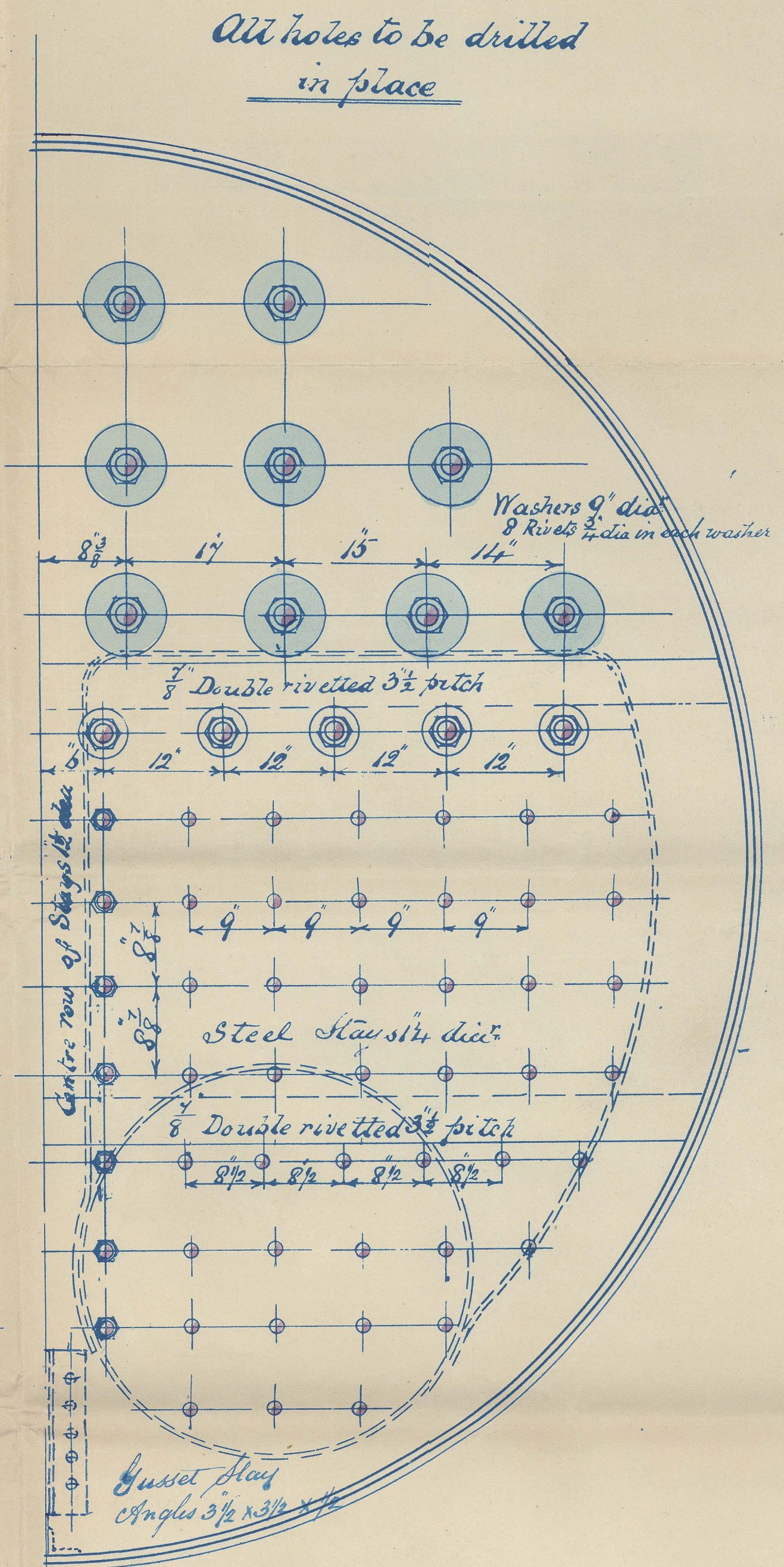
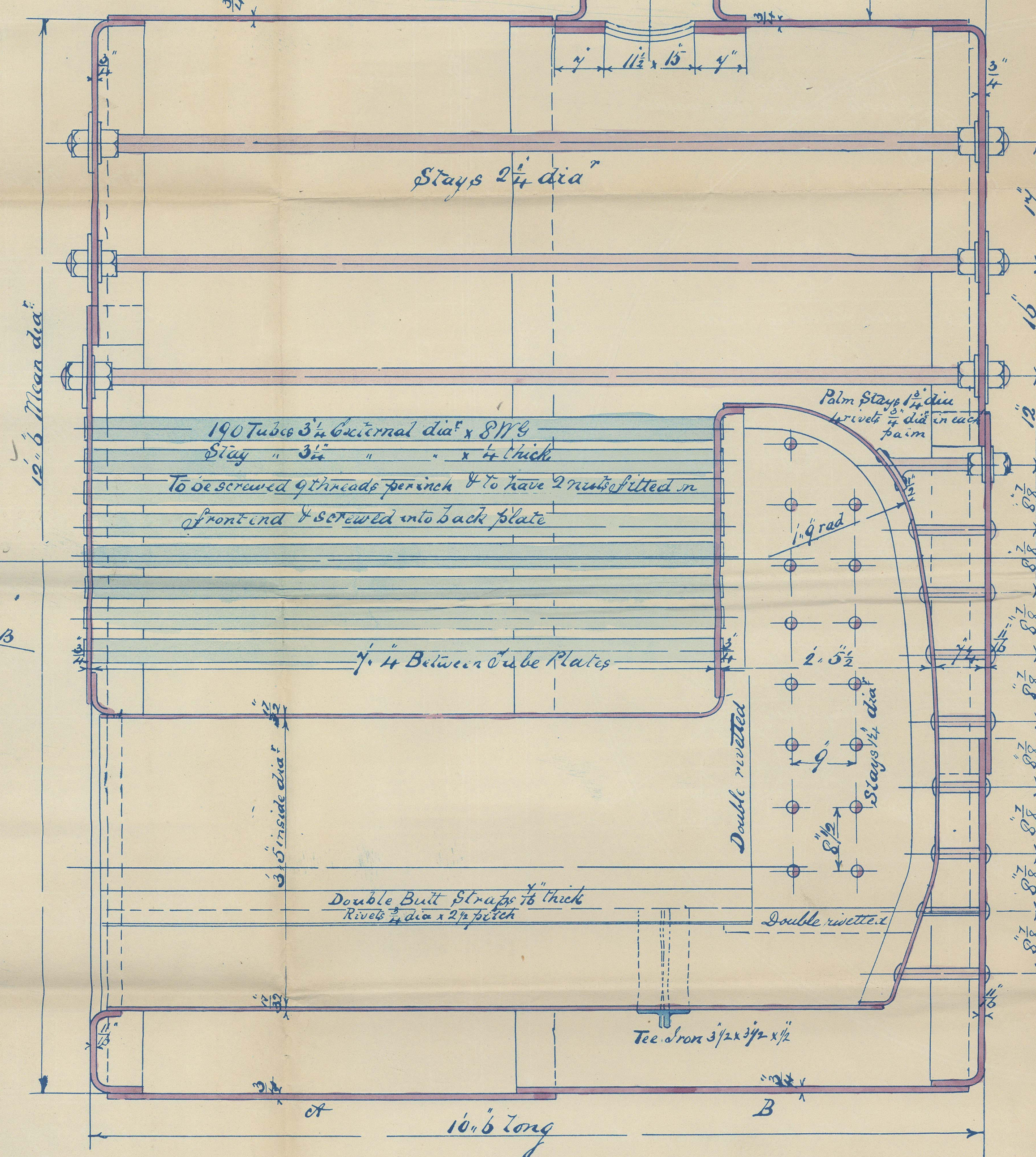
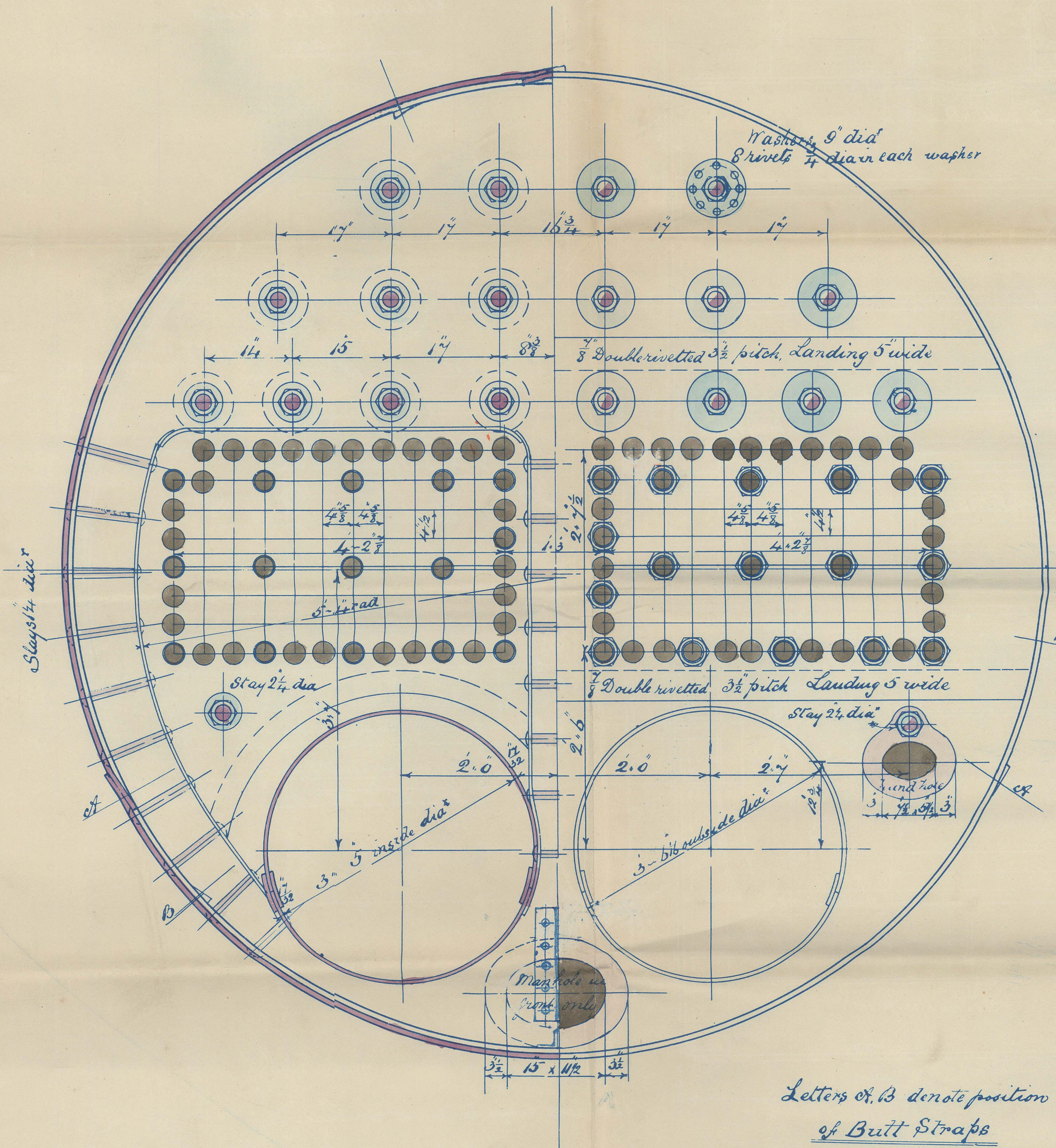
WORKING PRESSURE 80 lbs per sq inch  
TEST do 160 do do do

Material - Plates - Steel  
Maker -  
Stays - Steel



Max 22" dia

3.4.83



1 1/2 Screwed Stays 11 threads per inch  
1 1/4 " " 9 " " "



Lloyds Tracing  
Contract N<sup>o</sup> 181  
Ship " 87

S.S. "McGarel"  
Nwc. Report No. 14407



© 2021

Lloyd's Register  
Foundation

NWC 789-0157



15



3

NWC 789-0157



© 2021  
Lloyd's Register  
Foundation