

LOYD'S REGISTER OF SHIPBUILDING
23 JUL. 83
LONDON

W. & A. R. STEPHENS
JARROW.
July 17th 1883
and Iron Co. Ltd.

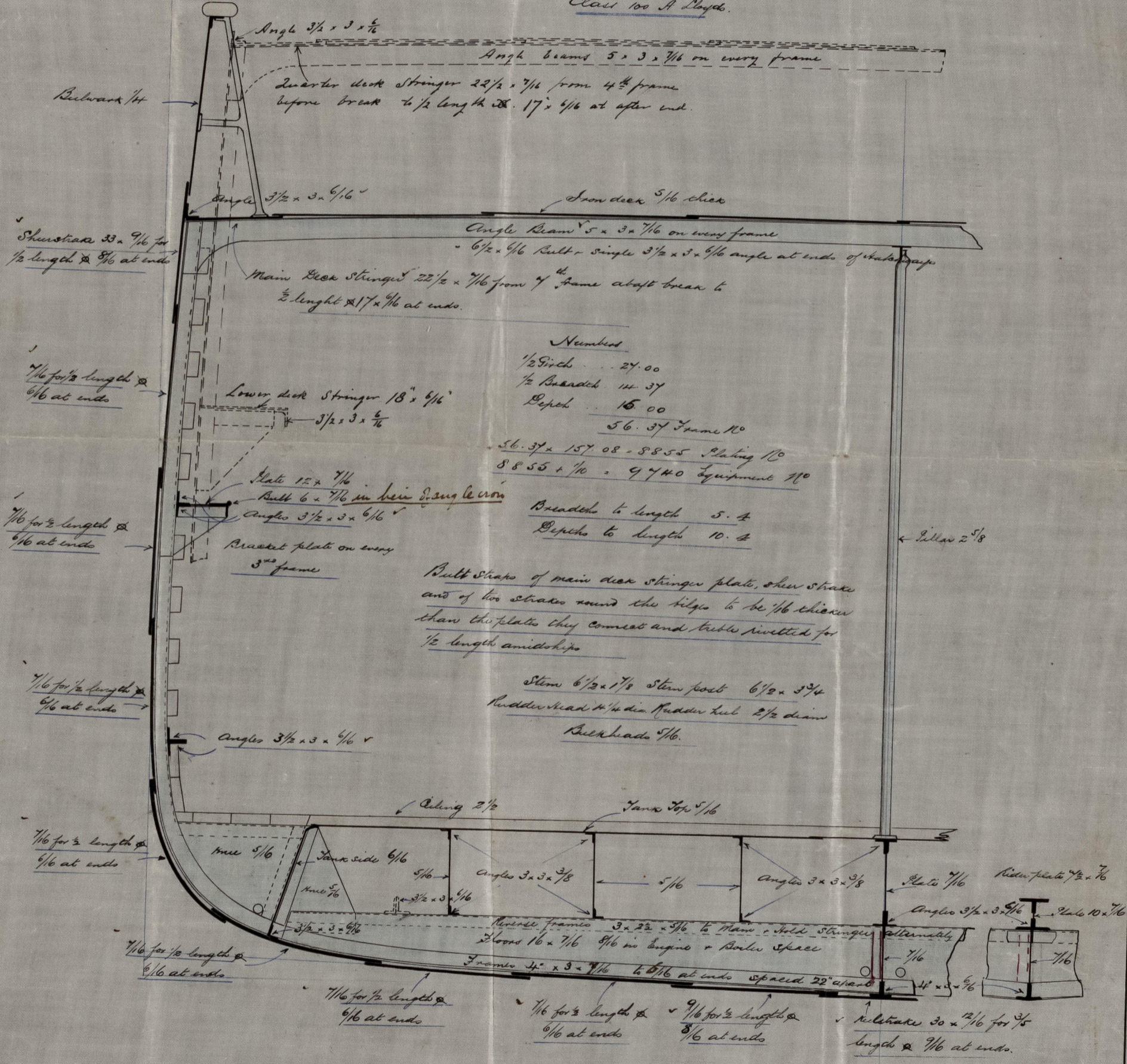
322
L.R. to Nwc: S.S. "John Lyaughton" Nwc. Report No. 19294
24/7/83. MIDSHIP SECTION S S N° 526

SCALE 1/2 INCH TO A FOOT

Principal Dimensions.

Length between perps	158.2
Breadth moulded	28.9
Depth moulded	14.8
Depth of hold	13.8

Class 100 A Lloyd's.



Numbers

1/2 Struts	24.00
1/2 Brackets	14.37
Depth	15.00
56.37 Frame No	
56.37 x 157.08 = 8855	Plating 10
8855 x 1/10 = 885.5	Equipment 10
Breadths to length 5.4	
Depths to length 10.4	

Built Strake of main deck stringer plate, sheer strake and of two strakes round the bilge to be 1/16 thicker than the plates they connect and to be rivetted for 1/2 length amidships

24/7/83

22 JUL 82
BOX 5007

22 JUL 82
"John" 22 JUL 82



NWC 789-0032



© 2021
Lloyd's Register
Foundation