

Tyne Iron Shipbuilding Co. Ltd. 4.5 Ship

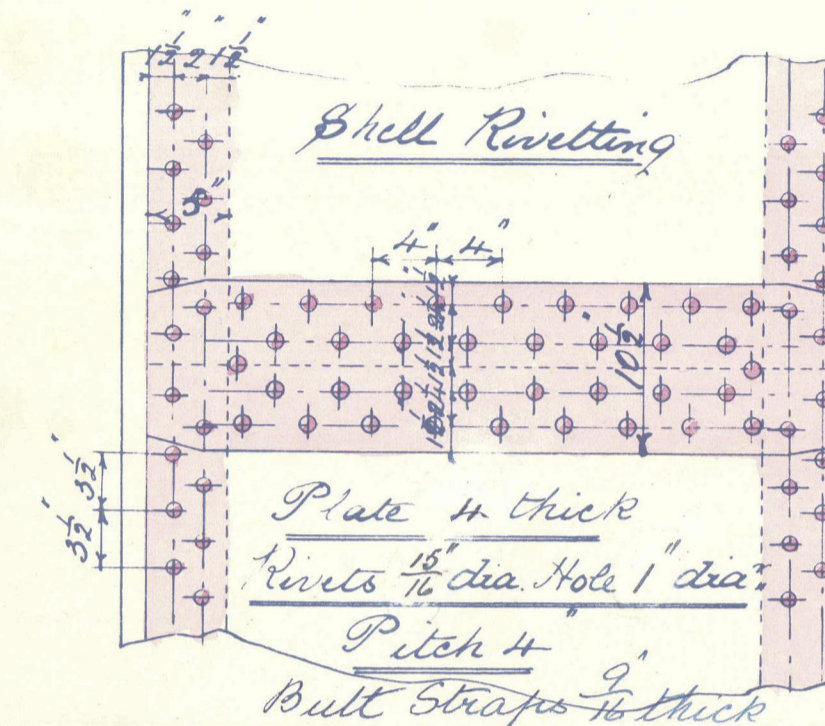
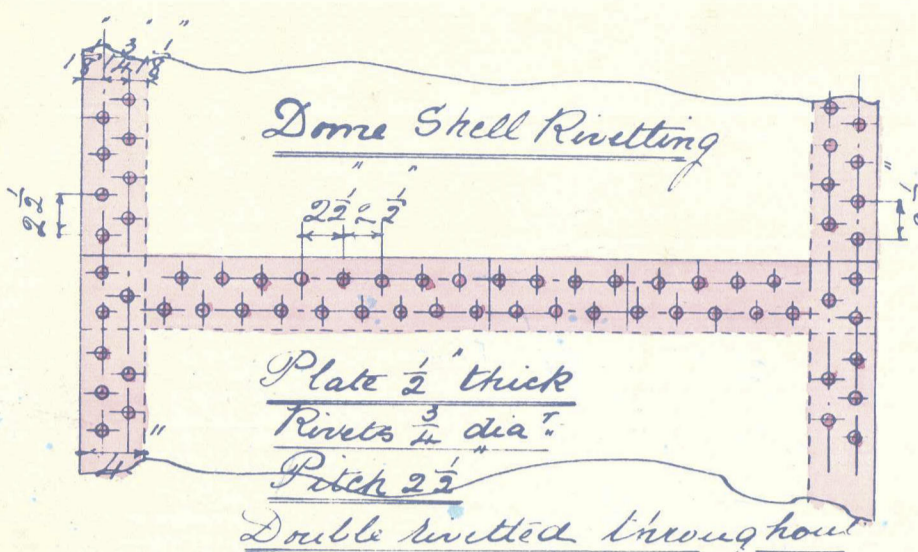
Letter N. S. K. 15/2/82.
422/3/82

BOILER CONTRACT NO 138

Scale one inch = 1 foot

HEATING SURFACE	Sq Ft.
TUBES	1130
FURNACE	82
COMBUSTION CHAMBERS	116
TUBE PLATES	42
TOTAL 1 BOILER	1400 Sq Ft x 2 = 2800
STEAM SPACE 1 BOILER	Cub Ft
1 DOME	
TOTAL 1 BOILER	Cub Ft
WORKING PRESSURE	90 lbs per sq inch
TEST	180 do do do

Material - Plates - Steel
Makers - Lancashire Siemens Steel Co.
Stays - Iron.

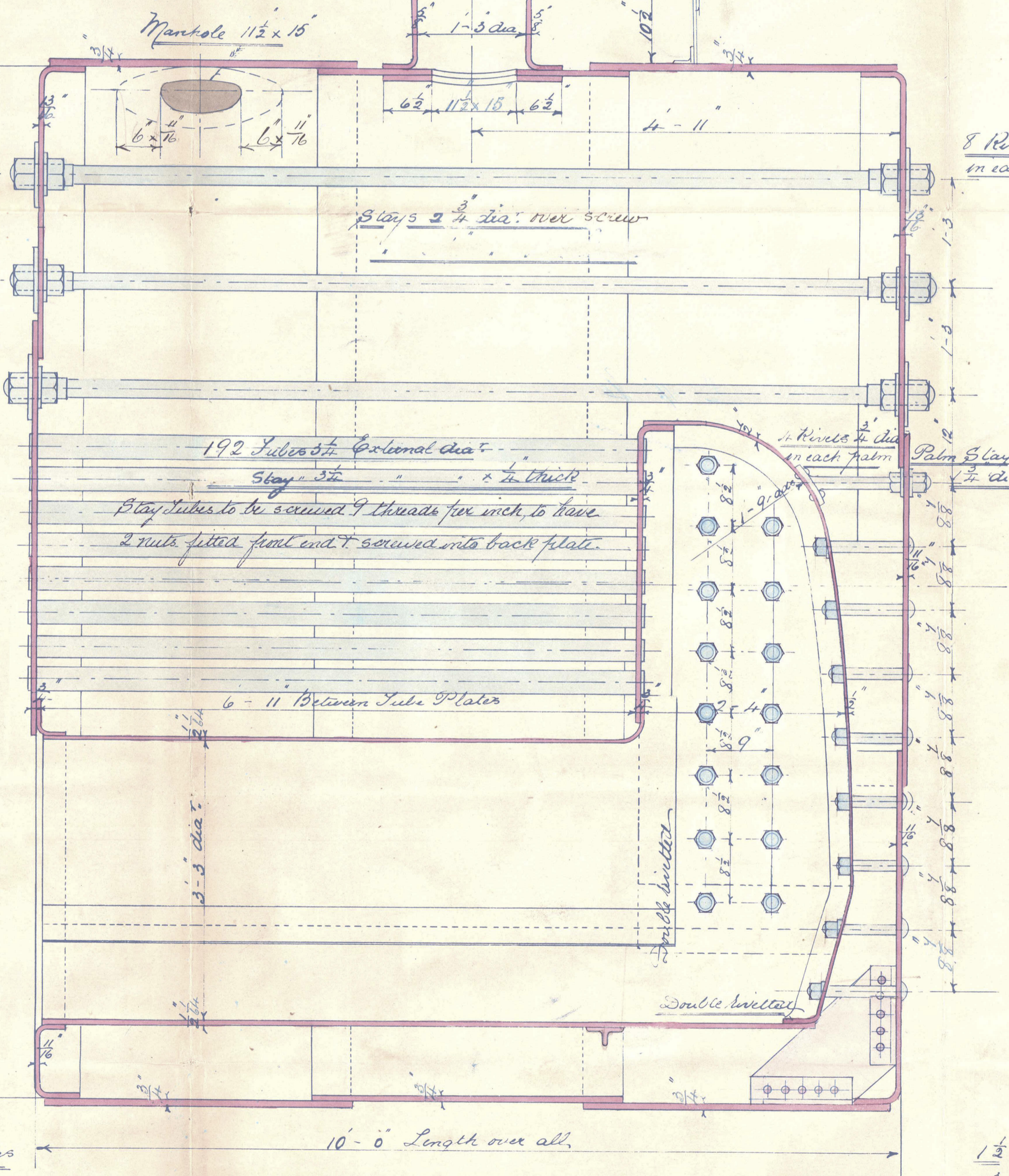
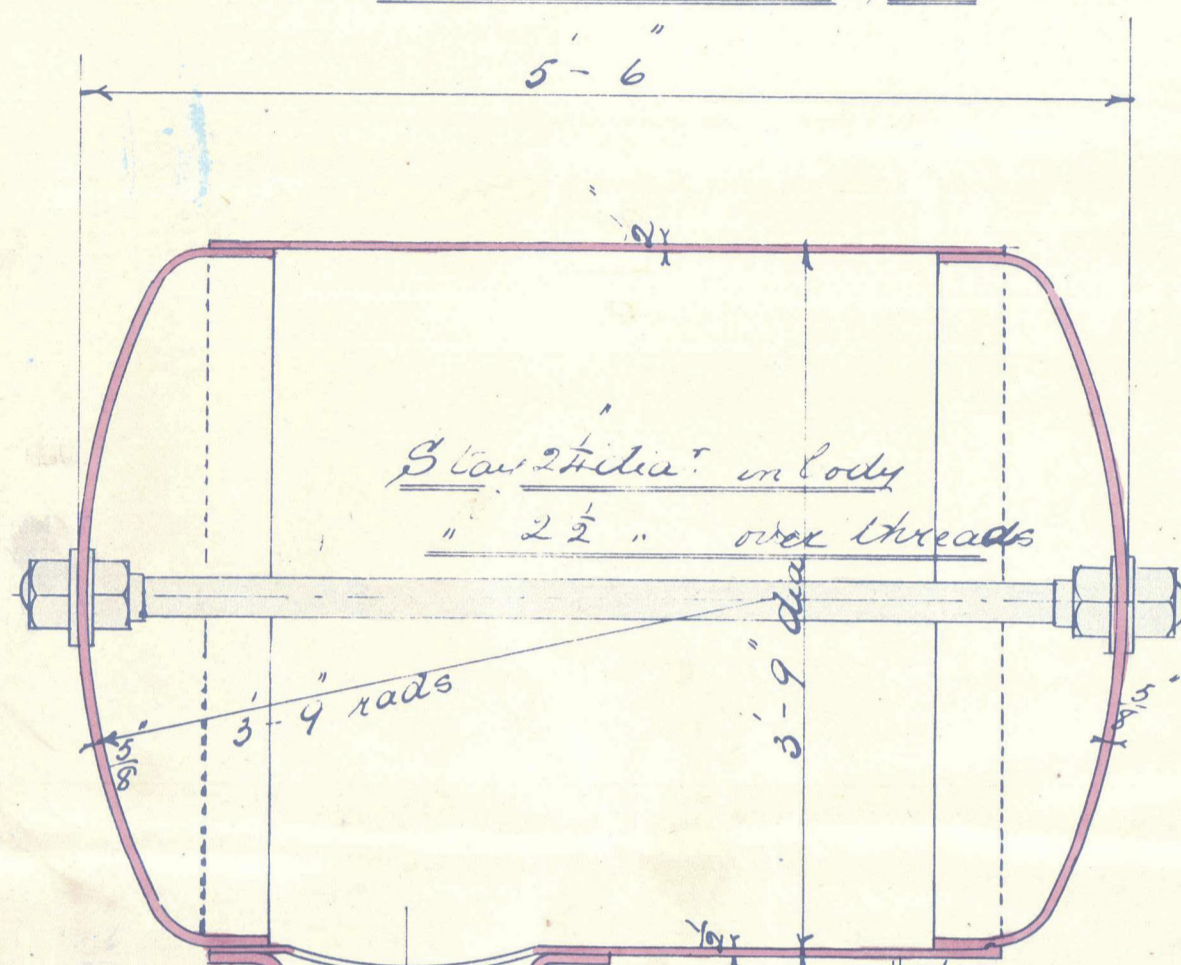


All holes drilled in plates after bending

2 off thus right & left

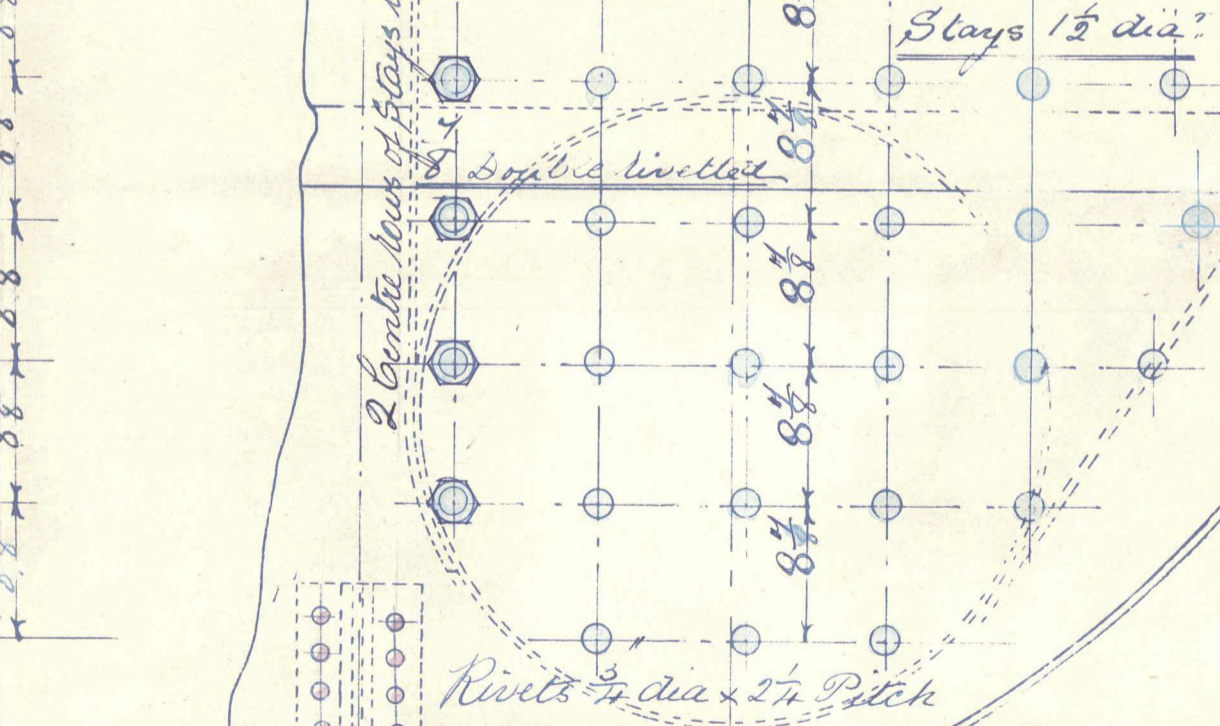


21.3.82



8 Rivets 3/4" dia. in each washer

8 Rivets 3/4" dia. in each stay



1 1/2" Spaced Stays 11 lines apart

Letters a B C denote position of butt straps

S.S. "Rennie"

Boiler

N^o 138 C.

7/2/82

Drawn by

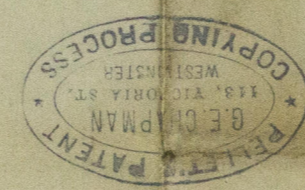
Thos. Iron Shipbuilding Co

N^o 438

92-16269

NW 782-0069

Part 1



11

