

S.S. "Borneo" Nwc. Report No. 15804

S.S. No. 2

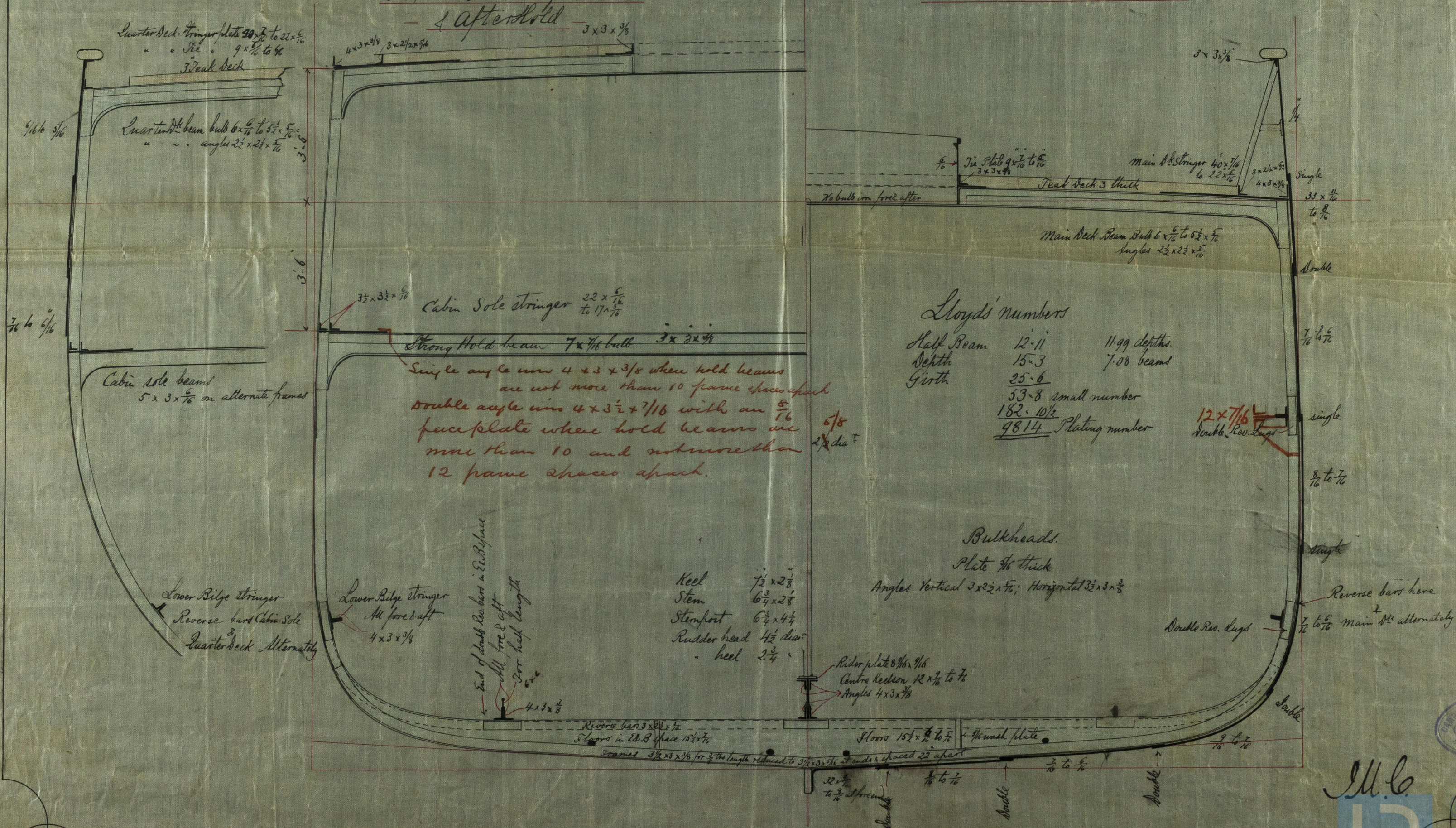
Length b.P. 184' 0"
 Beam extreme 26' 0"
 " moulded 25' 10"
 Depth to top of floors 13' 11 1/2"
 Round of beam 5"
 Class 100 A 1 @ Lloyd's
 Scale 1/2" = 1 foot



Section in way of Cabin

Section thro' Engine Room
 & after hold

Section thro' Main Hold



Lloyd's numbers

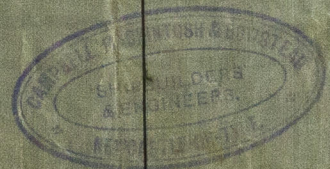
Half Beam	12.11	11.99 depths
Depth	15.3	7.08 beams
Girth	25.6	
	53.8 small number	
	182.10 1/2	
	9814	Plating number

Bulkheads.
 Plate 5/16 thick
 Angles Vertical 3 x 2 1/2 x 5/16; Horizontal 3 1/2 x 3 x 3/8

Keel 7 1/2 x 2 3/8
 Stem 6 3/4 x 2 3/8
 Stem post 6 3/4 x 4 1/4
 Rudder head 4 1/2 dia
 " keel 2 3/4

Reverse bars here
 Double Riv. Lugs
 7/16 to 5/16 Main 8" alternately

2/4/81



M.C.
 R
 18m 5/16
 4/7/87
 Registered
 Foundation

NWC 780-0123

See "Spec. Report No. 1280"



Section from Main Hold



© 2021

Lloyd's Register Foundation