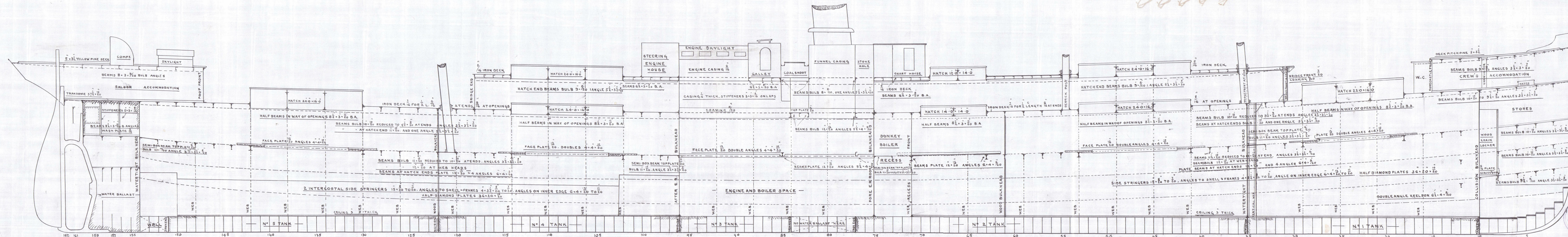


ELEVATION

DIMENSIONS 325 x 48 x 24-3" MLO

SCALE 1/8" = ONE FOOT.

TO CLASS "100A1" AT LLOYD'S THREE DECK RULE (WITH FREEBOARD)



ROPER & SON
IRON & STEEL
7 AUG. 1900
SHIP BUILDERS
STOCKTON-ON-TEES

S. S. "Acis"

Lab Report-452925

Sister vessel to
 St. Aker 2505
 St. Edward Bary. 2761
 St. London Bridge. 2774
 St. Anna " 2789

Lloyd's Register
Foundation