

AMENDED STEEL LOWERMASTS

— SCALE $\frac{1}{4}$ " = ONE FOOT. —

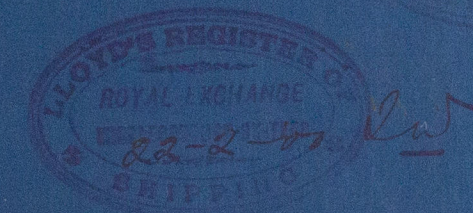
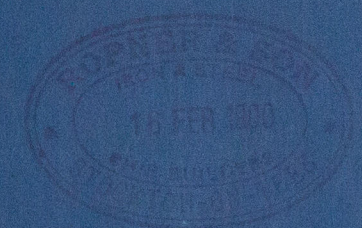
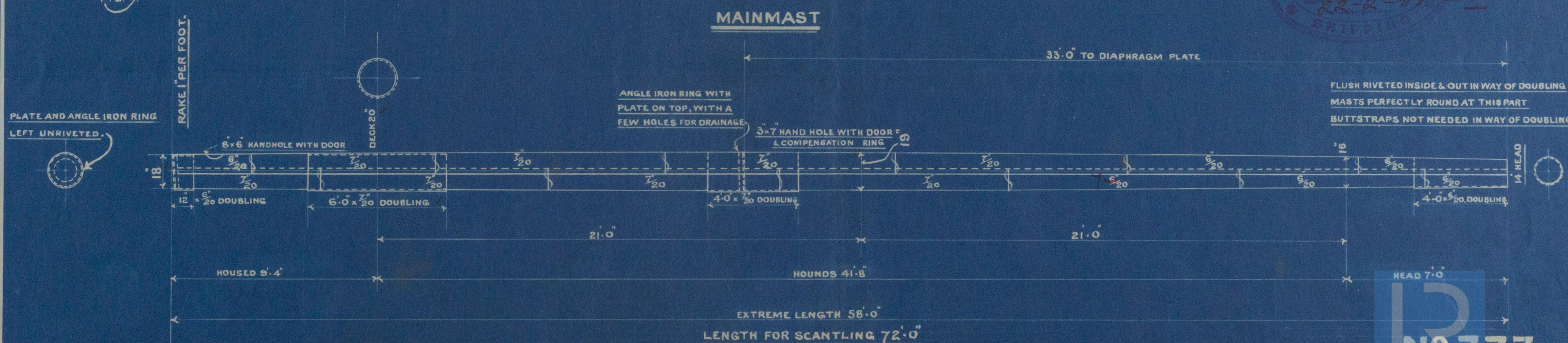
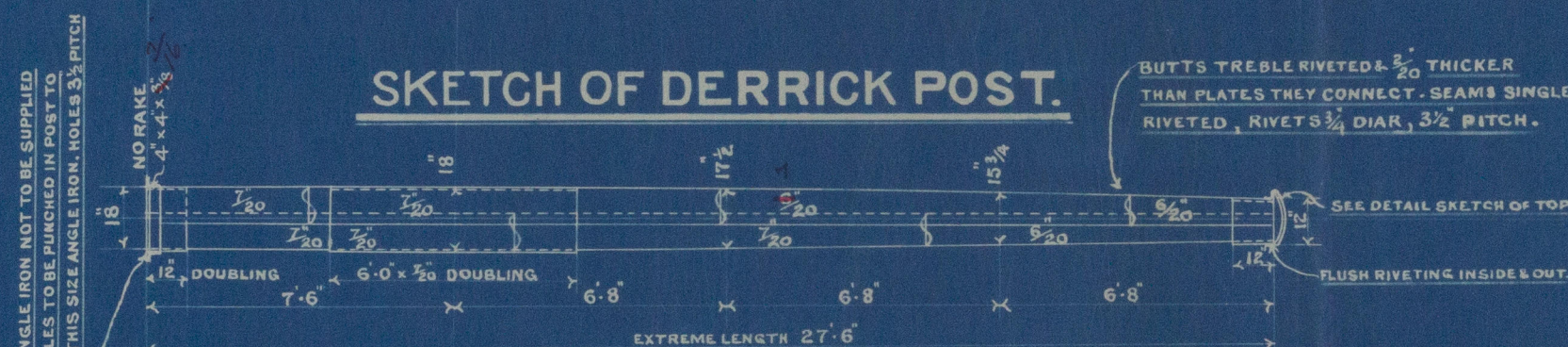
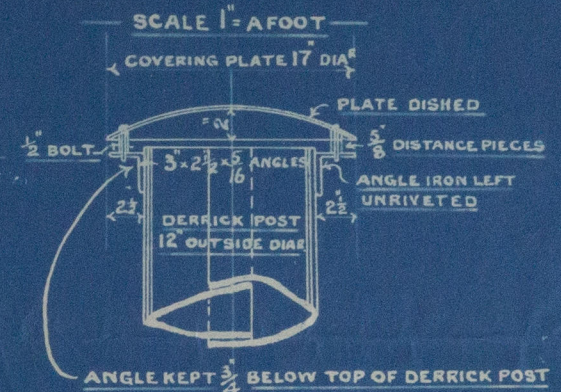
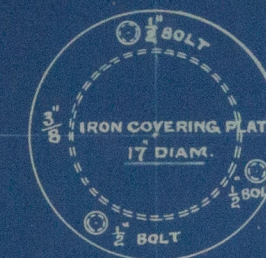
MASTS TO BE MADE WITH TWO PLATES IN THE ROUND, FORE STRAKE OUTSIDE.
BUTTSTRAPS FITTED INSIDE.

ALL BUTTSTRAPS TREBLE RIVETED AND $\frac{3}{20}$ " THICKER THAN PLATES.

BUTTS AND SEAMS RIVETED WITH $\frac{3}{4}$ " RIVETS, 5 DIAS APART. SEAMS SINGLE RIVETED.

MASTS TO CARRY FORE AND AFT SAILS ONLY.

SKETCH SHEWING ARRANGEMENT OF
COVERING PLATES TO DERRICK POST



No 373.

Amended Mast-Plan

Popner House

Re 343

U.S.P. "Hcis"

Intro Report Re 2925



© 2021

Lloyd's Register
Foundation

MD3766-0164