

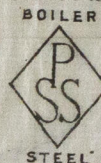
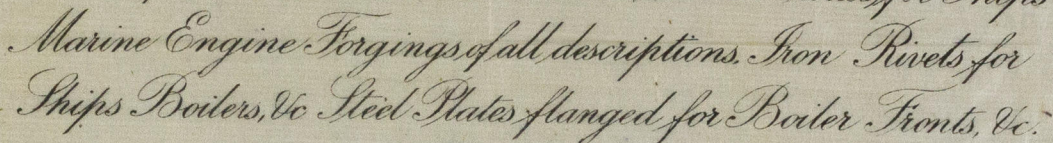
LONDON OFFICE.
11, QUEEN VICTORIA ST., E.C.

Parkhead Forge Rolling Mills,
and Steel Works,
Glasgow, 10th June 1899

Misses Wm Alpha C. L. L.

Bought of William Beardmore & Co.

Manufacturers of Steel Plates, Bars & Rivets (Siemens Process) for Ships, Boilers, &c.



STEEL							
C 2009.	1	423	6.5 m.	46 1/2	7/16	4	2 16.
E.	1	432	5.0 1/4	16 1/4	1/8	3 .	.
m.	2	301	14.8 1/4	36 1/2	7/16	1 .	. .
S.	3	302	2.4	20	3/8	3 .	16.
L.	1	"	3.1 1/2	9.	"	2.	12
R.	3	"	5.3	2		3 .	.
B.	1	312	21. 11 1/2	49 3/4	1 3/16	2 14	2 .
D.						4. 14.3.	16

27/32 Louis

27/32 ins

Grill 243936, 43937 to South Loch
Goodwin. Sunderland.

Barney to Lloyd's Register

2 Ps	10.2.16.	20.
9 "	1.6.3.0.	49.
1.	2.14.2.0.	396



© 2019

Lloyd's Register
Foundation

MD8 765-0154