

TELEGRAPHIC ADDRESS  
"BEARDMORE, GLSGOW."  
"BEARDMORE, LONDON."

LONDON OFFICE.  
11, QUEEN VICTORIA ST., C.E.

TELEPHONE NO 1356.

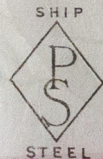
Parkhead Forge Rolling Mills,  
and Steel Works,

Glasgow, 3<sup>rd</sup> May 1877

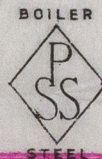
Messrs Wm Sharr & Co<sup>rs</sup>

Bought of William Beardmore & Co<sup>rs</sup>

Manufacturers of Steel Plates, Bars & Rivets (Siemens Process) for Ships Boilers, &c.



Marine Engine Forgings of all descriptions. Iron Rivets for  
Ships Boilers, &c. Steel Plates flanged for Boiler Fronts, &c.



6200 B1	SS 560	21 11/16	3/84	69 3/4	1 3/16	217 3 0	327/32
1/1	801	8 0 1/2		58 1/2	1/16	10 1 0	
2			4/88			3 8 0 0	

Pro & Co<sup>rs</sup> 39014.67976  
to South Dock Sunderland

Surveyor to Lloyd's Register.



MD8765-0142