

TELEGRAPHIC ADDRESS.
 "BEARDMORE, GLASGOW."
 "BEARDMORE, LONDON."
 LONDON OFFICE.
 11, QUEEN VICTORIA ST., E.C.

TELEPHONE NO 1356.

Blackhead Forge Rolling Mills
 and Steel Works

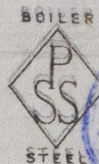
Glasgow 13th March 99

Messrs Wm Allan & Co

Bought of William Beardmore & Co

Manufacturers of Steel Plates, Bars & Rivets (Vimms Rivets) for Ships, Boilers, &c.

Marine Engine Fittings of all descriptions. Iron Rivets for
 Ships, Boilers, &c. Steel Plates flanged for Boiler Fronts, &c.



C 200.3	P 35448	6.5 1/2	46 1/2	13/16	8 . .
K 1	421	"	34 1/2	1/16	4 3 .
P 14	406	2.10	12 1/2	3/4	12 . .
K 2	421	8.10 1/2	58 1/2	1 1/16	. 3 .
N 3	442	5.8	56 1/2	13/16	1 5 3 .
P 18	390	2.10	12 1/2	3/4	15 2 8.
C 2	389	0.11 3/4	16 1/2	1 1/8	4 . .
S 1	606	6.5 1/2	46 1/2	13/16	4 2 .
<u>42</u>					<u>5.118</u>

27/32
 J. H. Ballou
 Surveyor to Lloyd's Register

Per CR 346.00 to South Dock Sta.
 Landed

2. P. 4.00 3/68.
 1. 4.2.0 3/64.
 39 4.6.3.8 0/64.

