

TELEGRAPHIC ADDRESS.
 "BEARDMORE, GLASGOW."
 "BEARDMORE, LONDON."

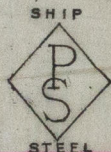
LONDON OFFICE.
 11, QUEEN VICTORIA ST., E.C.

TELEPHONE N° 1356.

Parkhead Forge Rolling Mills,
 and Steel Works,
 Glasgow 11 Feb 1899

Messrs Wm Allan & Co. Ltd.

Bought of William Beardmore & Co.
 Manufacturers of Steel Plates, Bars & Rivets (Siemens Process) for Ships, Boilers, &c.
 Marine Engine Forgings of all descriptions. Iron Rivets for
 Ships, Boilers, &c. Steel Plates flanged for Boiler Fronts, &c.



C 200	1	Pls 616	7.43/4 R 4	85	13/16	15	2.
	1	784		61 1/2	1 9/32	16	16
	2					211	216

(7/16)

(1/26)

Per CK 743 to Sunderland



17.2.99

MDB765-0131