

TELEGRAPHIC ADDRESS.
"BEARDMORE, GLASGOW."
"BEARDMORE, LONDON."

LONDON OFFICE.
11, QUEEN VICTORIA ST., E.C.

TELEPHONE N° 1356.

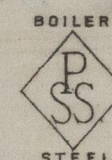
Parkhead Forge Rolling Mills,
and Steel Works,
Glasgow 8th Feb 1899

Messrs W^m Allan & Co

Bought of William Beardmore & Co^o
Manufacturers of Steel Plates, Bars & Rivets (Siemens Process) for Ships, Boilers, &c.



Marine Engine Forgings of all descriptions. Iron Rivets for
Ships, Boilers, &c. Steel Plates flanged for Boiler Fronts, &c.

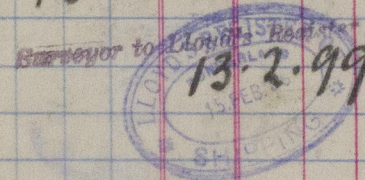


Flanged Plates

C200. 1 PSS 199. 4¹/₂ 3/4 rad. 110. 3/4. 1 13 2.

132.

Robt Hawke



Pay CR. 1973 to South Dock Goods Sta.
Sunderland.

MDB 765 - 0130



© 2019

Lloyd's Register
Foundation