

TELEGRAPHIC ADDRESS.  
 "BEARDMORE, GLASGOW."  
 "BEARDMORE, LONDON."

LONDON OFFICE.  
 11, QUEEN VICTORIA ST., E.C.

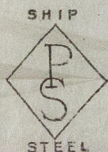
TELEPHONE N° 1356.

Parkhead Forge Rolling Mills,  
 and Steel Works,  
 Glasgow. 2<sup>nd</sup> Feb 18 99.

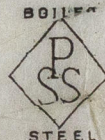
Messrs Wm Allan & Co

Bought of William Beardmore & Co

Manufacturers of Steel Plates, Bars & Rivets (Siemens Process) for Ships, Boilers, &c.



Marine Engine Forgings of all descriptions. Iron Rivets for  
 Ships, Boilers, &c. Steel Plates, Flanges, for Boiler Fronts, &c.  
 Flanged Plates.



200

1 Pss 823  $\frac{3}{16}$  y. 8  $\frac{3}{4}$  rods 6  $\frac{1}{2}$  1  $\frac{1}{32}$  1 5 2 .

1 " 670. y. 8  $\frac{5}{8}$  49  $\frac{1}{2}$  1  $\frac{1}{16}$  19 . .

2

5/24

2 4 2 .

Per CR. 9791. to Sunderland.

Robt. Howie  
 6.2.99.

MDB765-0128