

As built MIDSHIP SECTION

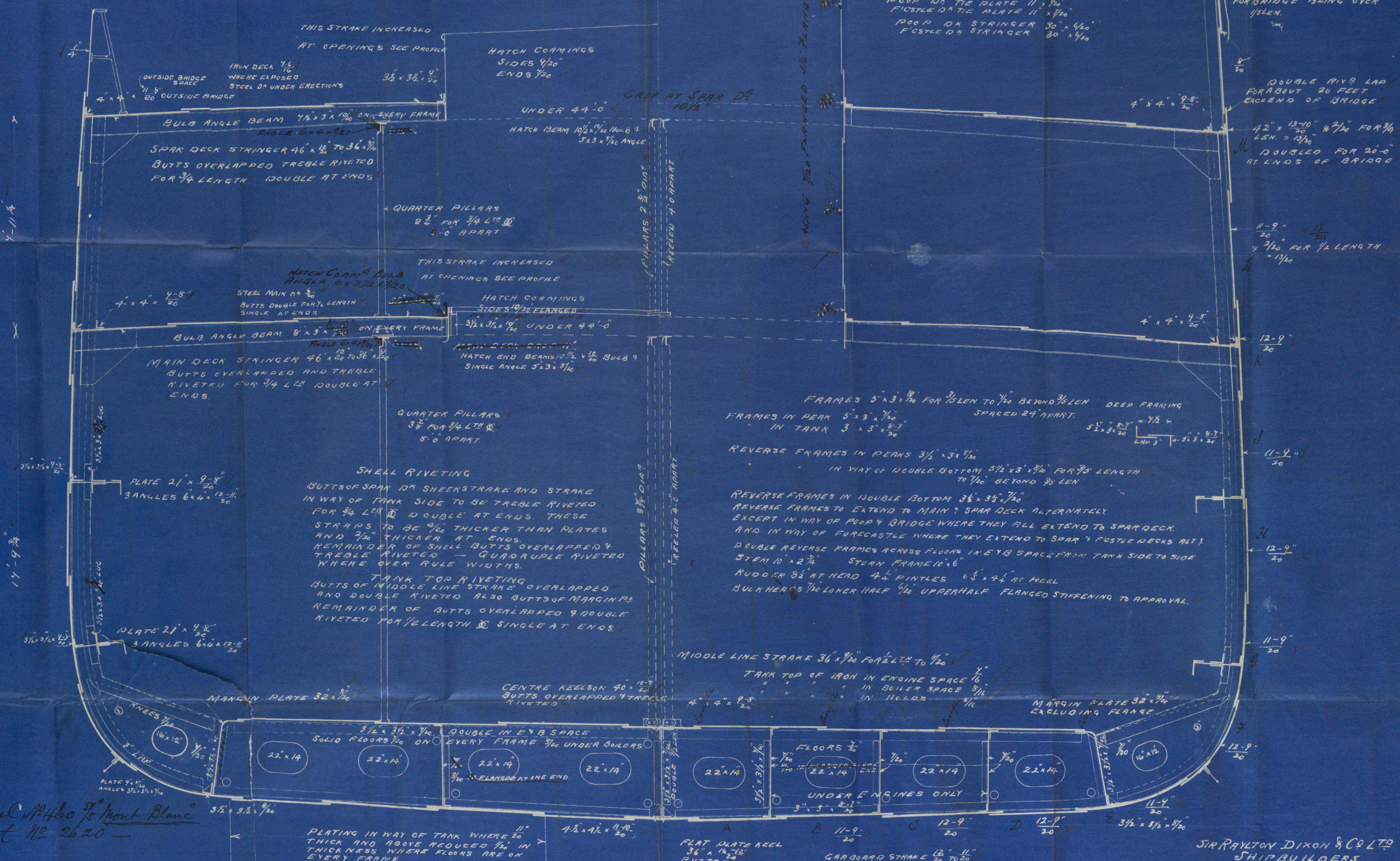
SCALE 1/2" = 1 FOOT

EQUIPMENT				DIMENSIONS			
POOP	36'-0"	1/2 GIRTH	44'-46"	LENGTH B.P.	320'-0"	DEPTH MID	25'-9" TO SPAR D ⁵
BRIDGE	68'-0"	1/2 BREADTH	22'-25"	BREADTH EX	44'-36"		
F' CASTLE	32'-6"	DEPTH	26'-66"	"	NLD	44'-6"	
TOTAL ERECTIONS	130'-5"		93'-87"				
	130'-5"		315				
	93'-87"		24850.66				
	1531.4		1531.4				
	1531.4		31382.36				

CLASS 100 R.I. SPAR DECK RULE

EQUIPMENT				NUMERALS			
2 BOWERS (STOCKLESS)	45% CHT EACH	1/2 GIRTH	37'-02"	1/2 BREADTH	22'-25"		
1 " "	39 "	1/2 DEPTH	18'-72"				
1 STEADY 11/16 CWT EX STOCK		COLLECTIVE DEPTH	77'-99" = 151' 18"				
1 KEDGE 5/8 "			318				
270 FATHOMS 1/8" STUD CHAIN CABLE			24800.82 = 2ND NO				
90 " 1/8" STEADY CHAIN ON 7/8" STEEL WIRE							
20F 90 " OF 7/8" HEAVY TOWLINE 24"							
20F 40 " OF 6"							

PROPORTIONS
L TO MAIN DECK 16.75
L TO SPAR DECK 11.9
L TO 1/4 14



Suber vessel SP460 7/8 Mont Blanc
Mdb Report 82 2620

Nº 470

MD8765 0074

J. RAYTON DIXON & CO LTD
SHIPBUILDERS
CLEVELAND DOCKYARD
MIDDLESBROUGH-ON-TEES
June 13th 99. N^o 6548.



Sir L. Dixon & Co

No 470

"Midship, Section"
Phangape -

Feb 28 92.



Letter parcel to

St. Mont Blanc.

Feb. 1890



© 2019

Lloyd's Register
Foundation

MDB765-0074