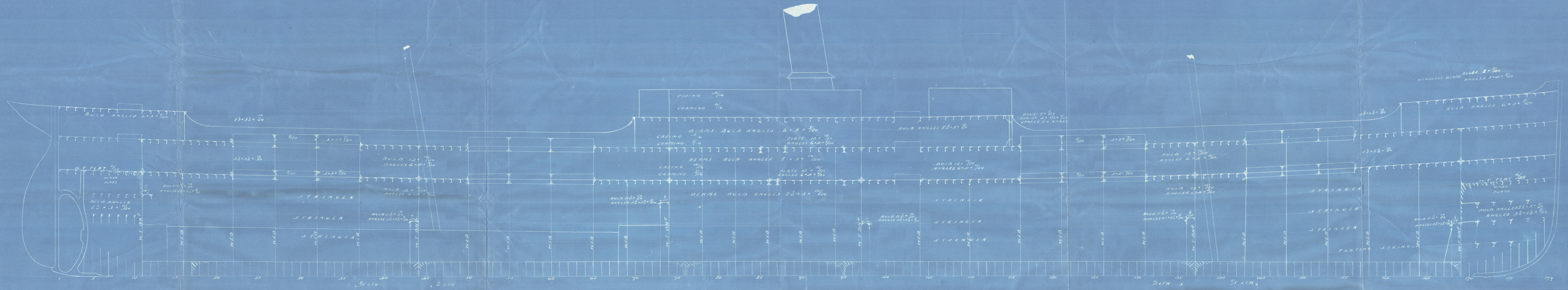


S.S. No 63.

LONGITUDINAL SECTION

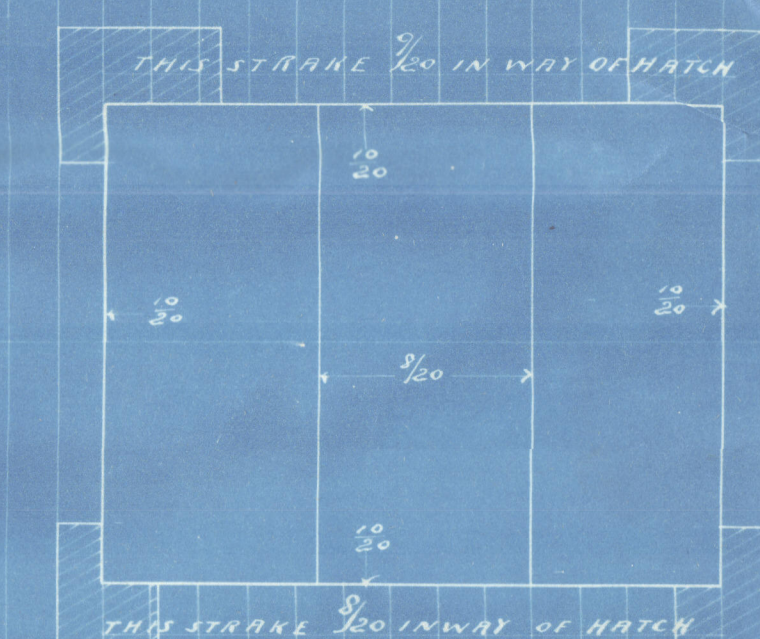
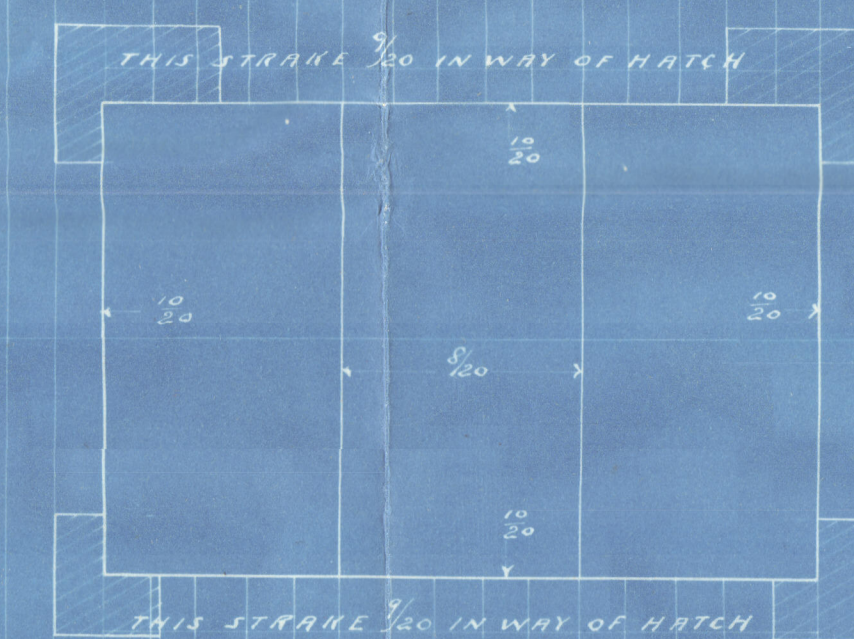
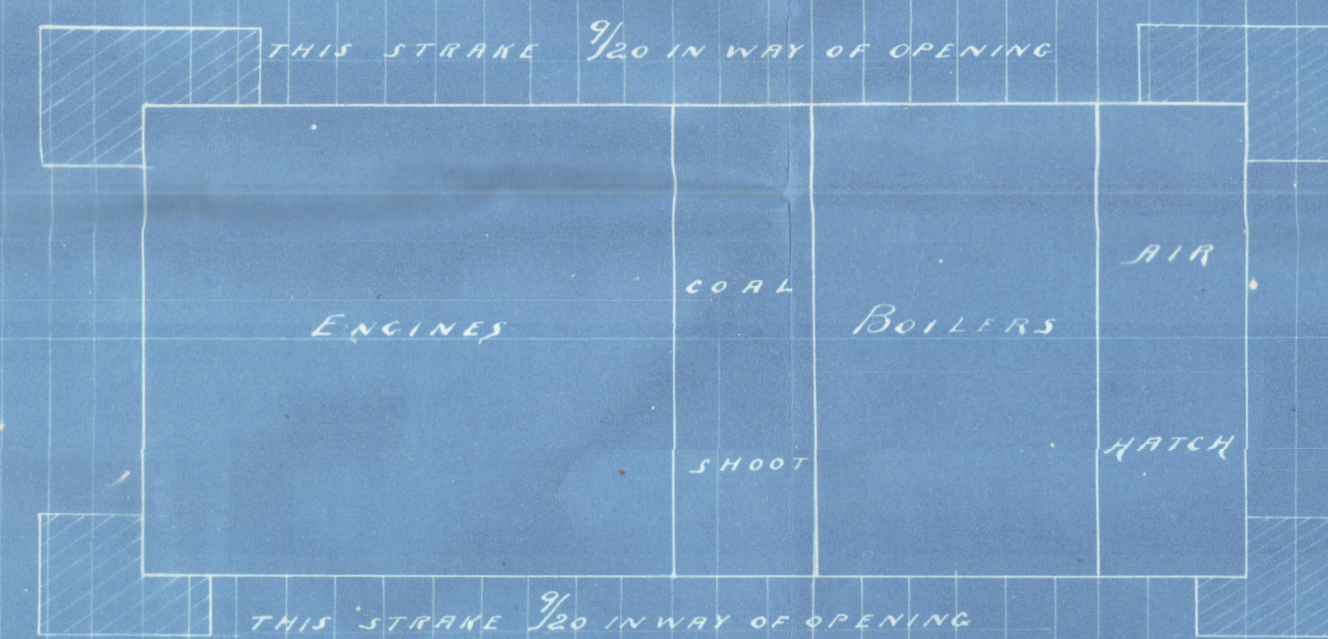
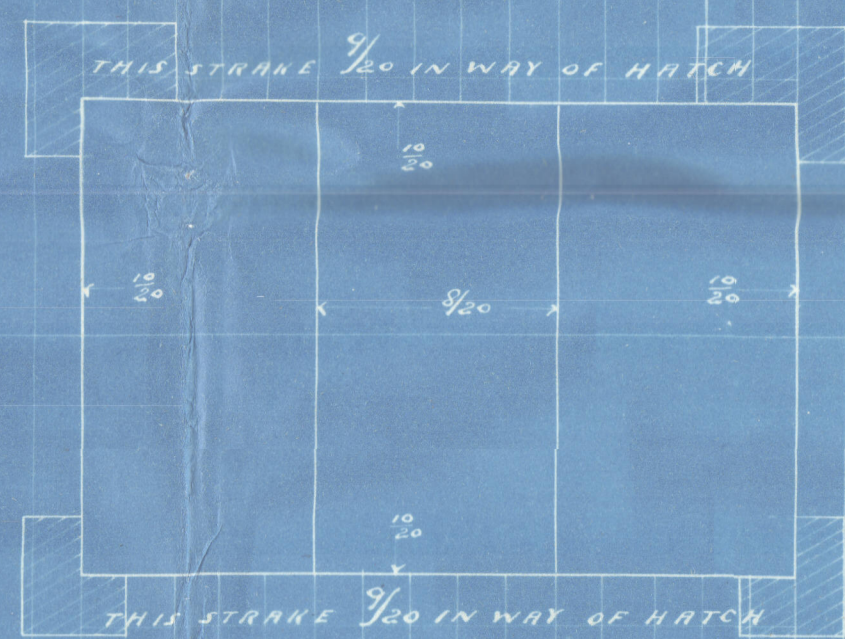
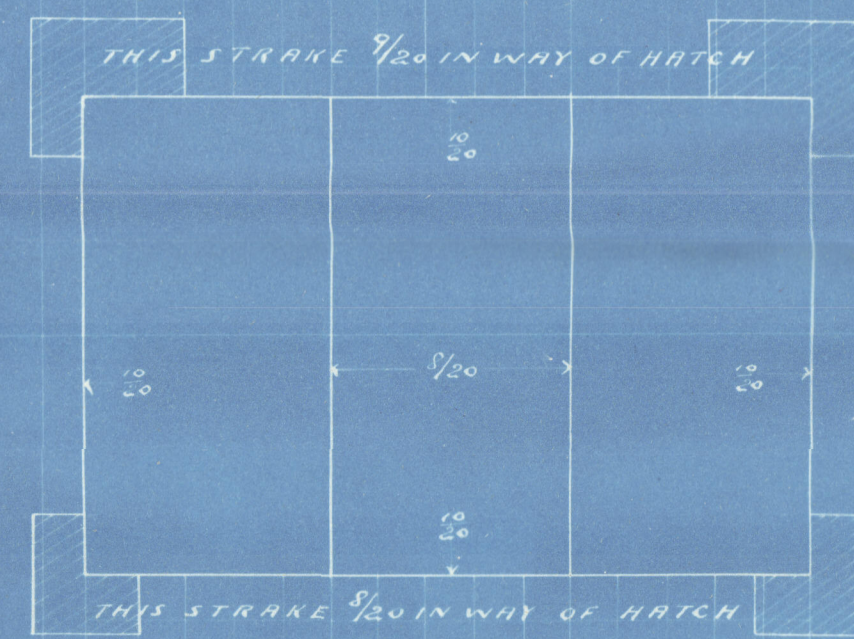
Scale 1/8" = 1 foot



SPRUE DECK

STRINGER 56" x 7/16" FOR 1/2 LTH TO 43" x 7/16" + 1/2" FOR 1/4 LTH

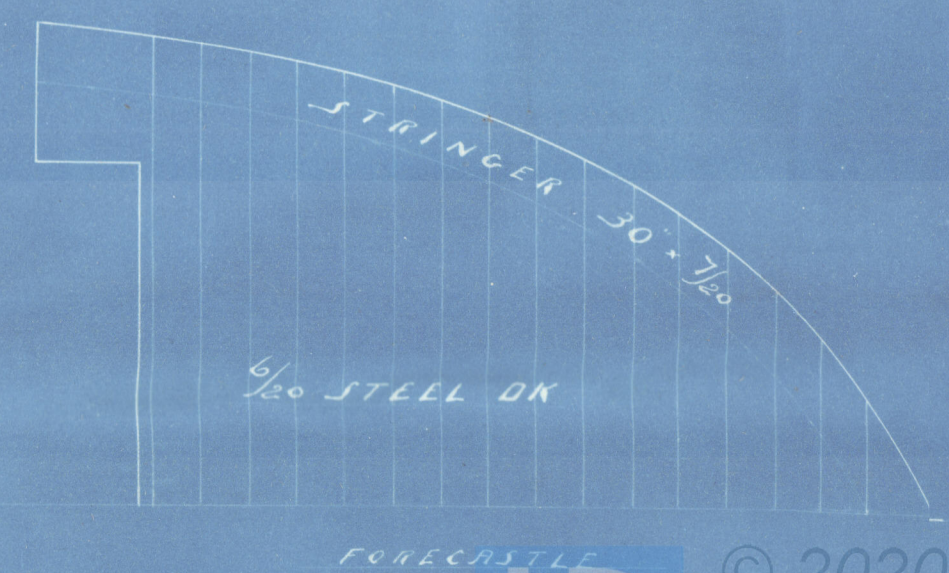
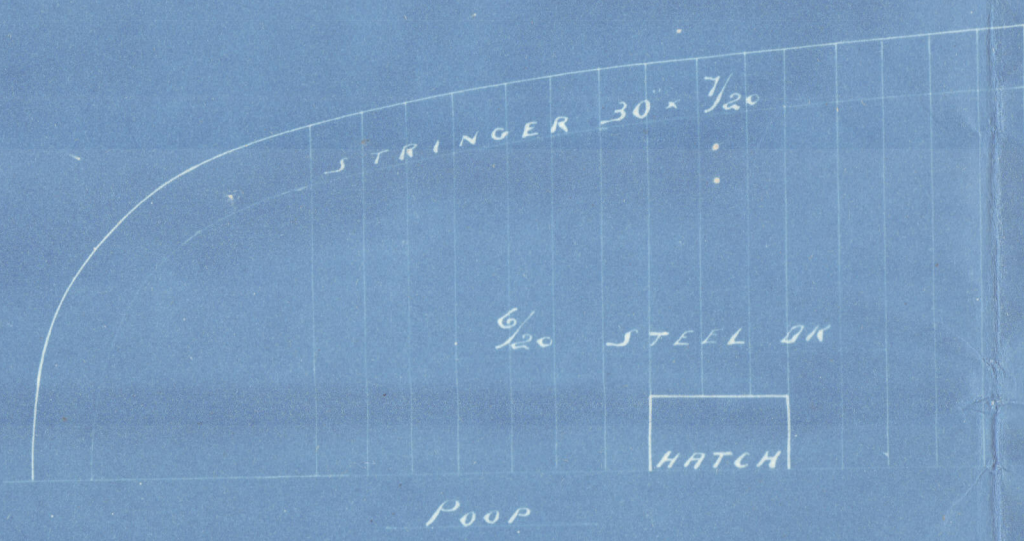
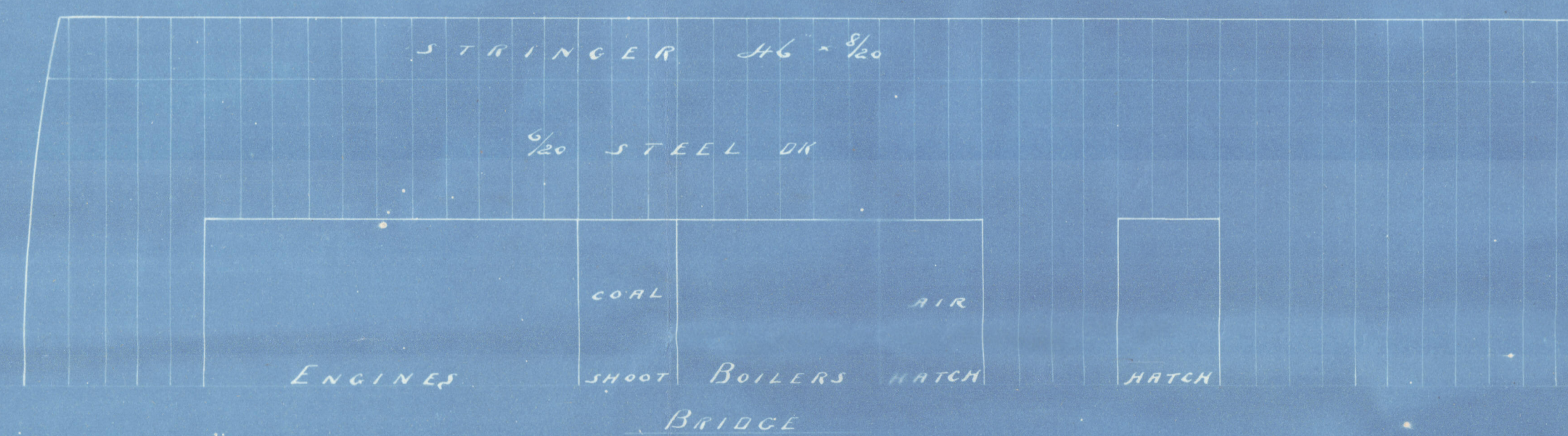
COMPLETE STEEL DECK FOR 1/2 LTH TO 1/4 LTH



COMPLETE STEEL DECK FOR 1/2 LTH TO 1/4 LTH

STRINGER 56" x 7/16" FOR 1/2 LTH TO 43" x 7/16" + 1/2" FOR 1/4 LTH

MAIN DECK



Profile & Deck Plan
Craig Taylor & Co
No 63

(Duplicate of 56134)

S.S. "Ormsley"
Mo Report - No 2668

sister vessel to
S.S. Sylviana
No 5321

S.S. Mayflower
No 2476

© 2020

Lloyd's Register
Foundation

MDB 763-0073