

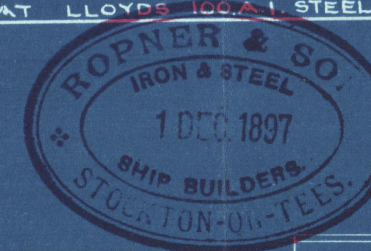
7.12.97

PROFILE.

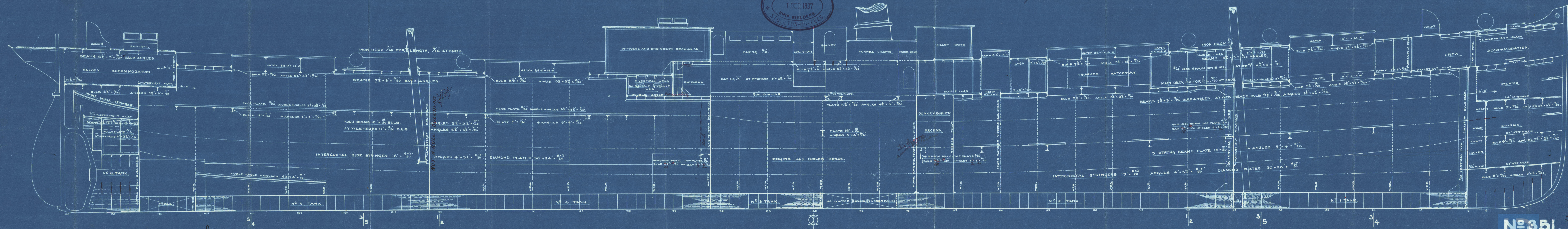
DIMENSIONS 322'0" x 41'6" x 24'0" MLD.

SCALE 1/8" = 1'0"

TO CLASS AT LLOYD'S 100% STEEL PARTAWNING DECK



Hatchings doubled at corners



7.12.97

No 351.

Lloyd's Register

MOB760-0141



MD8760-0141

W. J. St. J.
Answer Report No. 2441
U.S. No. 351

Report done
W. J. St. J.
© 2020
Lloyd's Register
Foundation