

# MIDSHIP SECTION

OF A STEEL SCREW  
STEAMER

DIMENSIONS  
LENGTH B.P. 352'-0" DEPTH MLD 26'-0"  
BREADTH EX 44'-0" CLASS AT LLOYDS 100A-1.

THREE DECKED RULE

SCALE 1/2 INCH = 1 FOOT

## EQUIPMENT

|  |                                    |                    |
|--|------------------------------------|--------------------|
| 2 BOWER ANCHORS                        | EX STOCK                           | 40 CWT             |
| 1 STREAM                               |                                    | 34 CWT             |
| 1 KEDGE                                |                                    | 12 CWT             |
|  |                                    | 6 CWT              |
| 270 FATHOMS OF 2 1/2" STUD CHAIN CABLE |                                    |                    |
| 90                                     | 1 1/2" STREAM CHAIN                | 22 1/2" STEEL WIRE |
| 120                                    | 1 1/2" TOWING OR 1 1/2" STEEL WIRE |                    |
| 30                                     | 10 HAWSER                          |                    |
| 90                                     | 9 MORA                             |                    |

17.12.96

13.8.97 LLOYDS NUMERALS

26.5.97 BREADTH 21.90

4.6.97 DEPTH 26.91

13.8.97 GIRTH 45.12

22.4.97 93.98

13.8.97 7.0

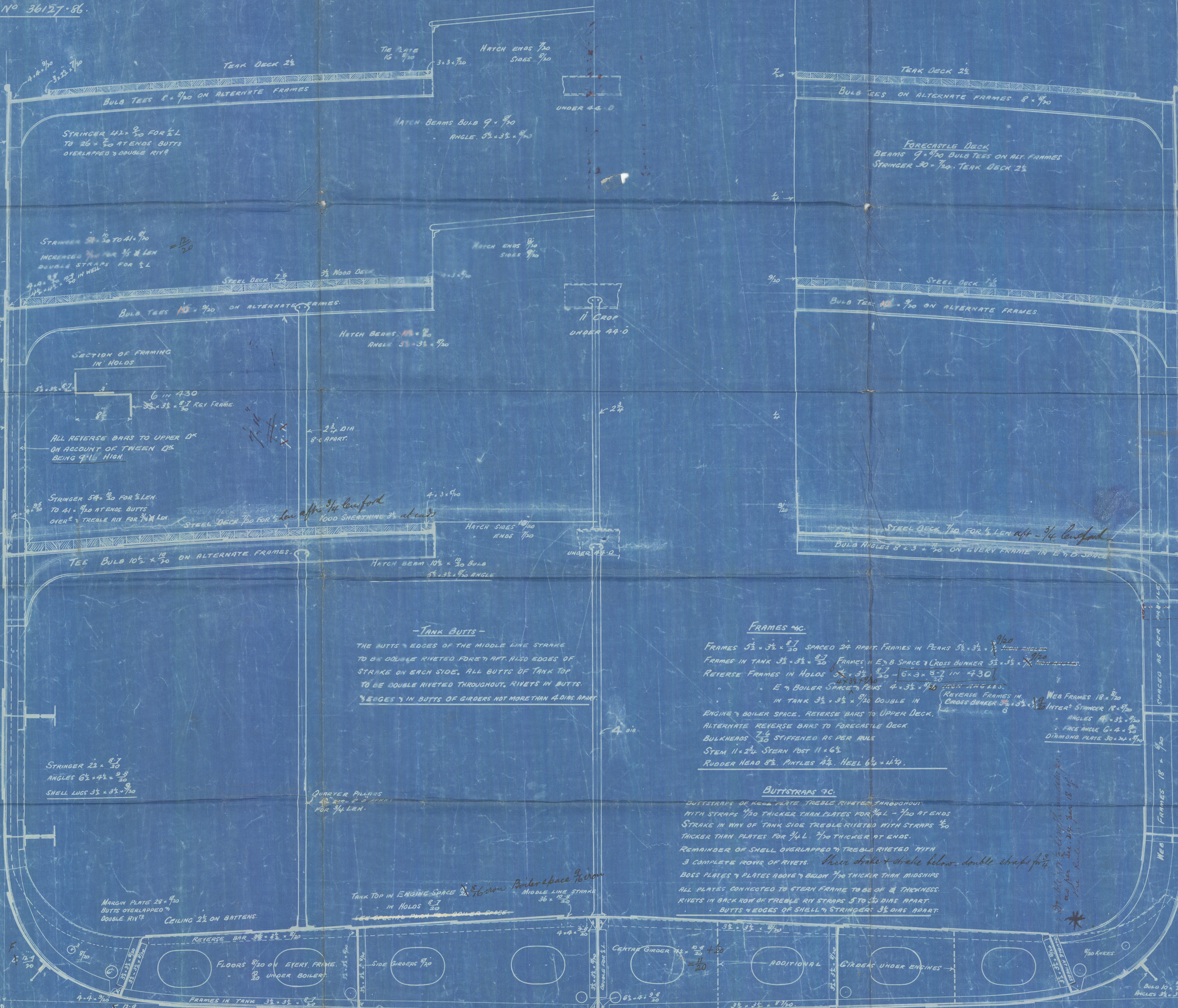
FRAME NO 86.93

349.66

PLATING NO 30395-9438

DEPTH TO LENGTH 12.99 U.D.

EQUIPMENT NO 36127-86.



Nº 447.

+No. 449 app. 100  
better 27/7/97

SAFEBORD STRAKE  
FLAT PLATE KEEL  
KEEL PLATE INCREASED 7/20  
SAFEBORD STRAKE 7/20  
FOR 1/2 LEN. IN LIEU OF FITTING DOUGLAS  
TO KEEL PLATES.

SHELL PLATING IN WAY OF TANK  
REDUCED 30 WHERE 1/2 OR ABOVE  
Roller space

SIR RAYLTON DIXON & CO  
SHIPBUILDERS & ENGINEERS  
11 DEC 98  
CLEVELAND DOCKYARD  
MIDDLESBROUGH

SIR RAYLTON DIXON & CO  
IRON SHIPBUILDERS  
CLEVELAND DOCKYARD  
MIDDLESBROUGH ON TEE

Lloyd's Register  
of Shipping



LLOYD'S REGISTER OF SHIPPING  
RECEIVED  
21 APR. 98  
LONDON

LLOYD'S REGISTER OF SHIPPING  
RECEIVED  
15 MAY 1897  
LONDON

LLOYD'S REGISTER OF SHIPPING  
RECEIVED  
5 MAY 1897  
LONDON

LLOYD'S REGISTER OF SHIPPING  
RECEIVED  
8 JUL 1897  
LONDON

LLOYD'S REGISTER OF SHIPPING  
RECEIVED  
25 MAY 1897  
LONDON

LLOYD'S REGISTER OF SHIPPING  
RECEIVED  
31 MAY 1897  
LONDON

LLOYD'S REGISTER OF SHIPPING  
RECEIVED  
2 JUN 1897  
LONDON

LLOYD'S REGISTER OF SHIPPING  
RECEIVED  
22 JUL 1897  
LONDON

LLOYD'S REGISTER OF SHIPPING  
RECEIVED  
22 JUL 1897  
LONDON

LLOYD'S REGISTER OF SHIPPING  
RECEIVED  
12 AUG 1897  
LONDON



Lloyd's Register  
Foundation



Sir Raylton Dixon & Co

N-447

Midship Section.

& No. 449 appd. See  
letter 22/7/97

4/2 "Bruxellesville"  
Intro report No. 2301

N-449. "Albertville"  
Intro report No. 2406



MDR 759-0184

Lloyd's Register  
Foundation