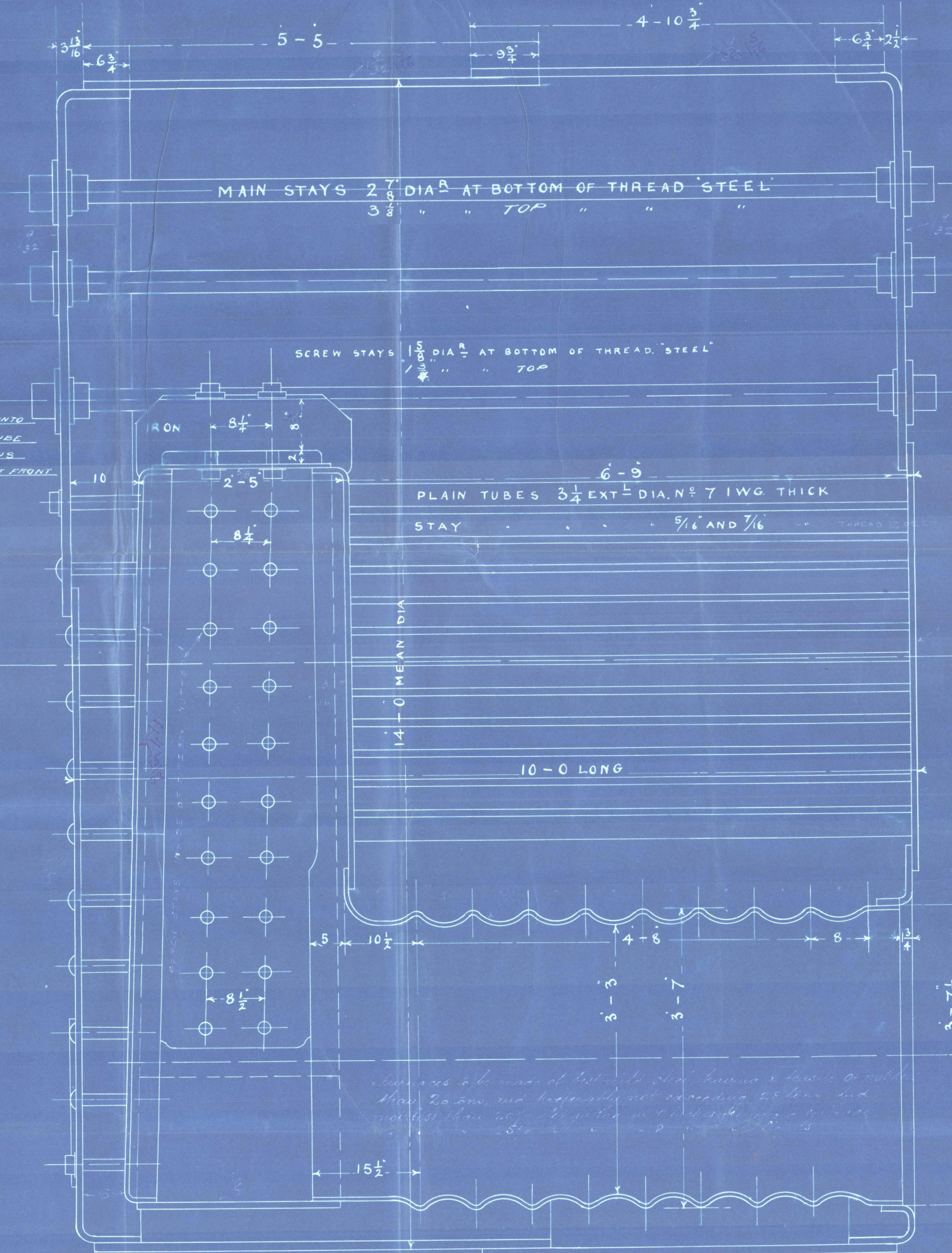
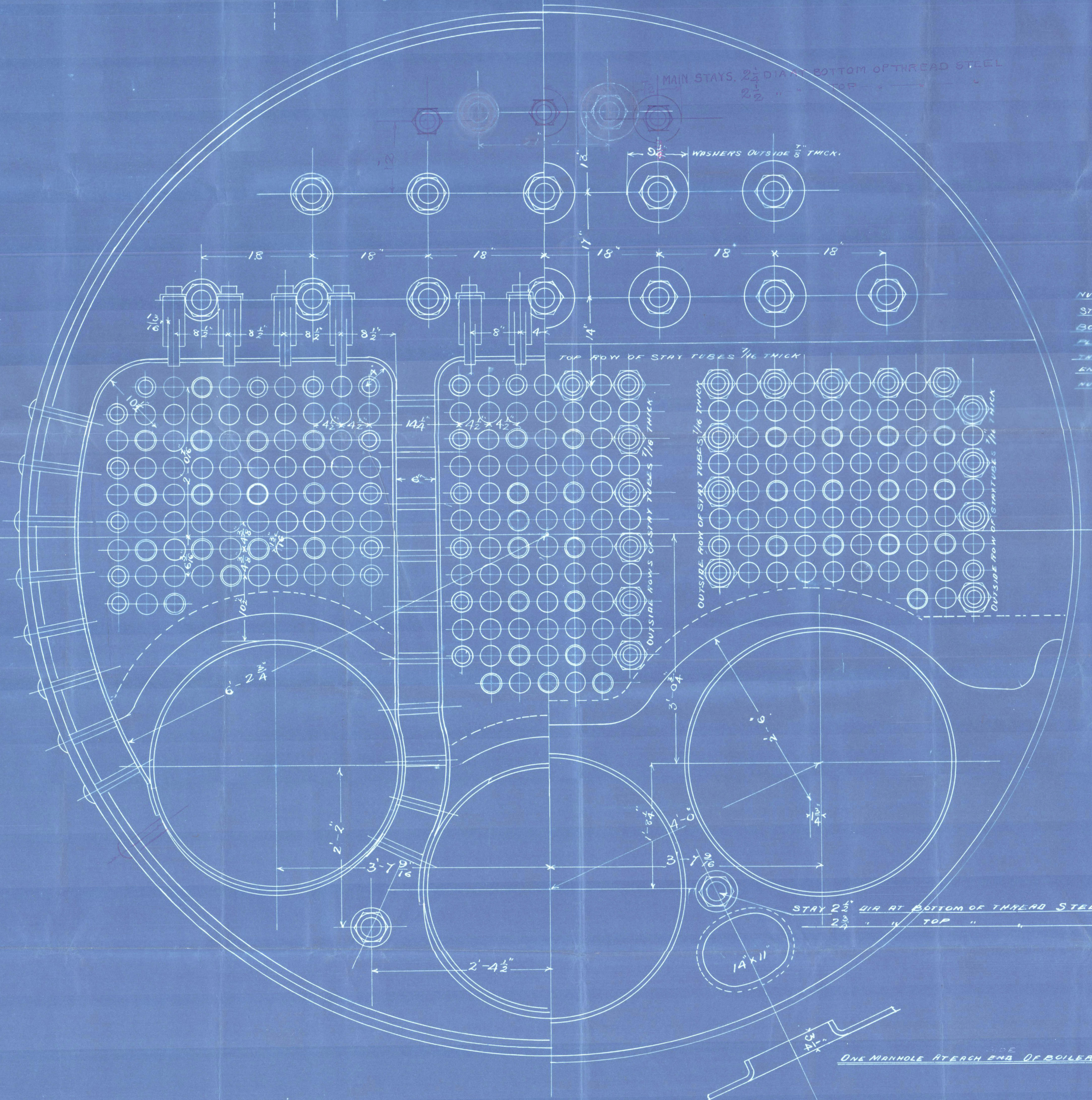
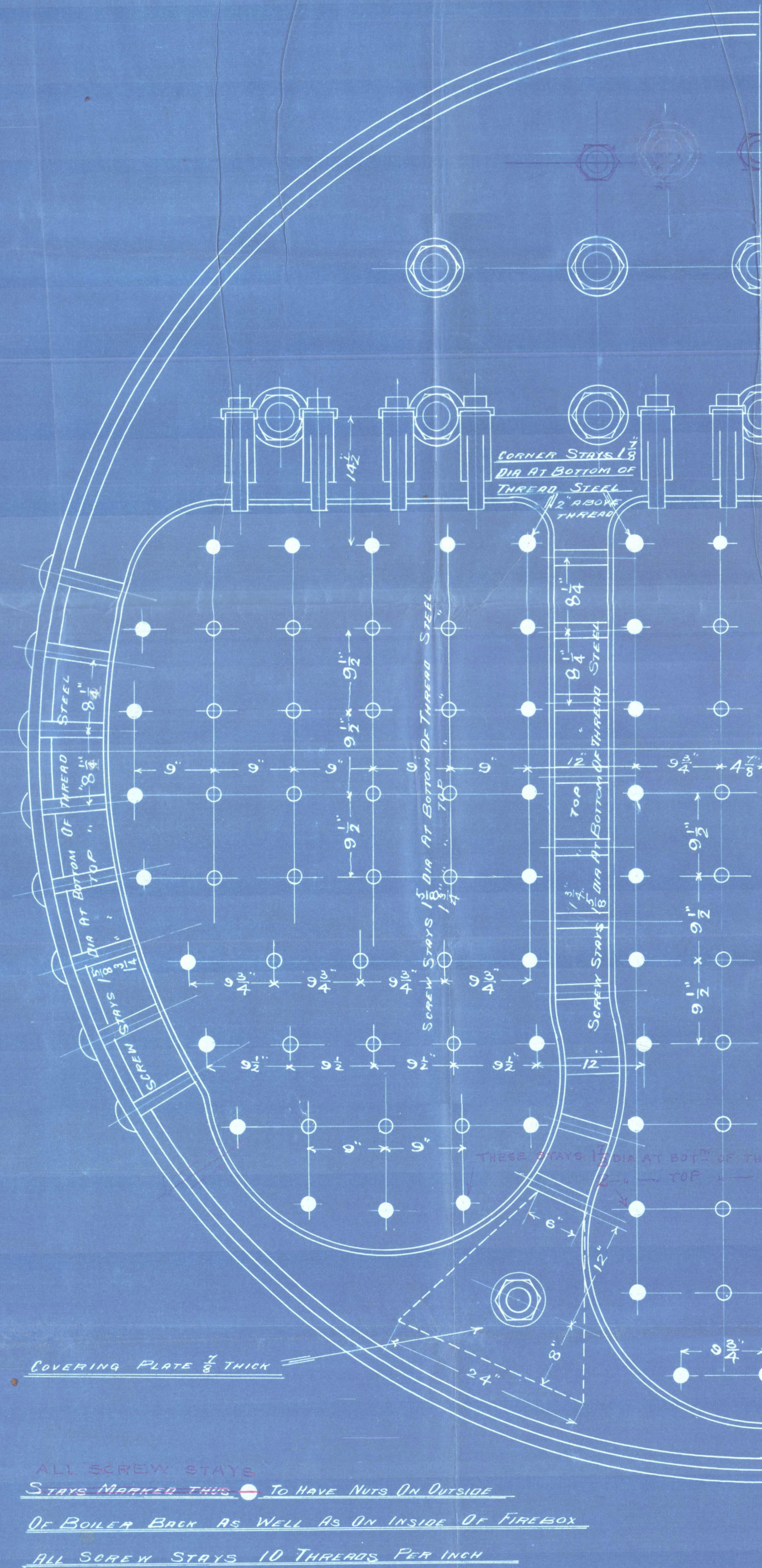
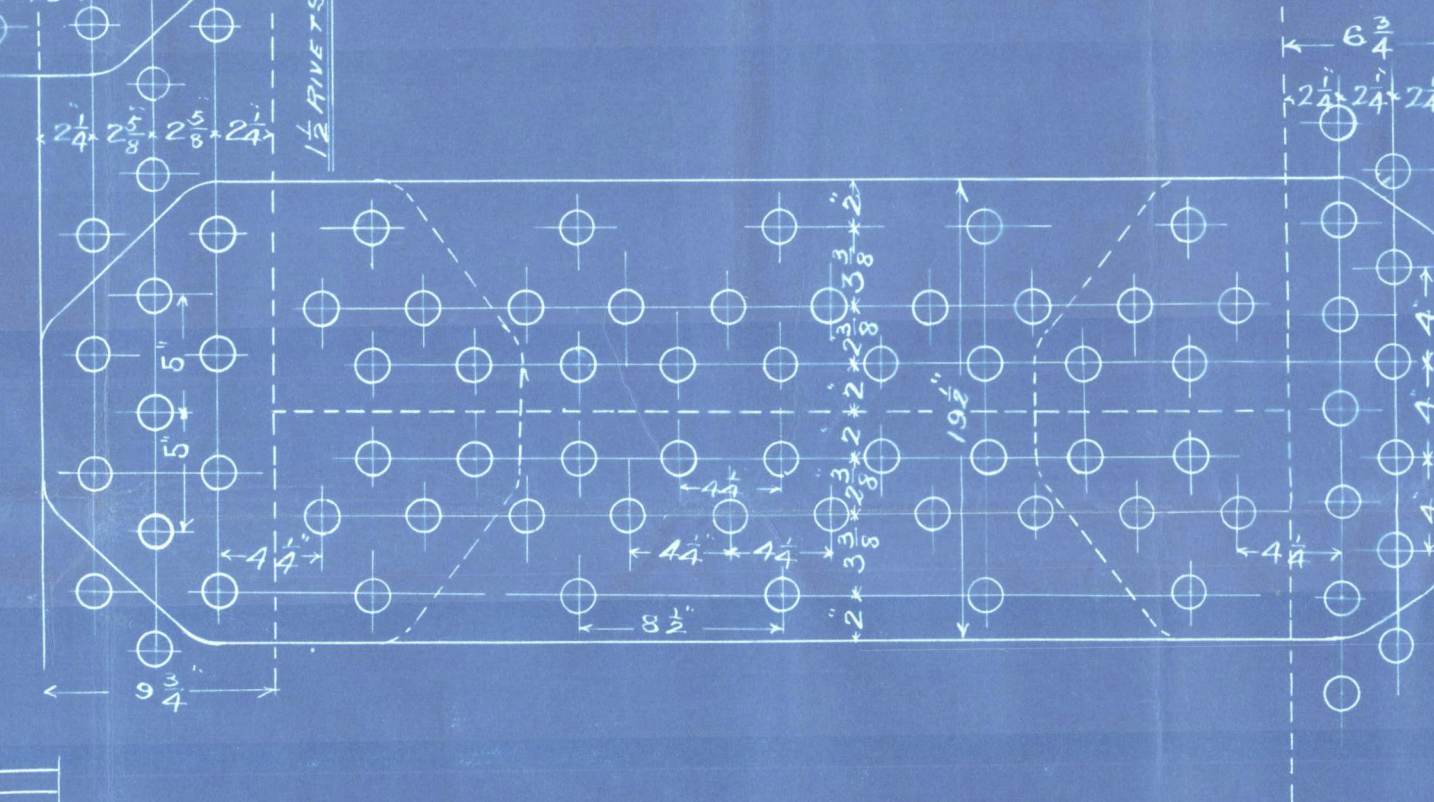
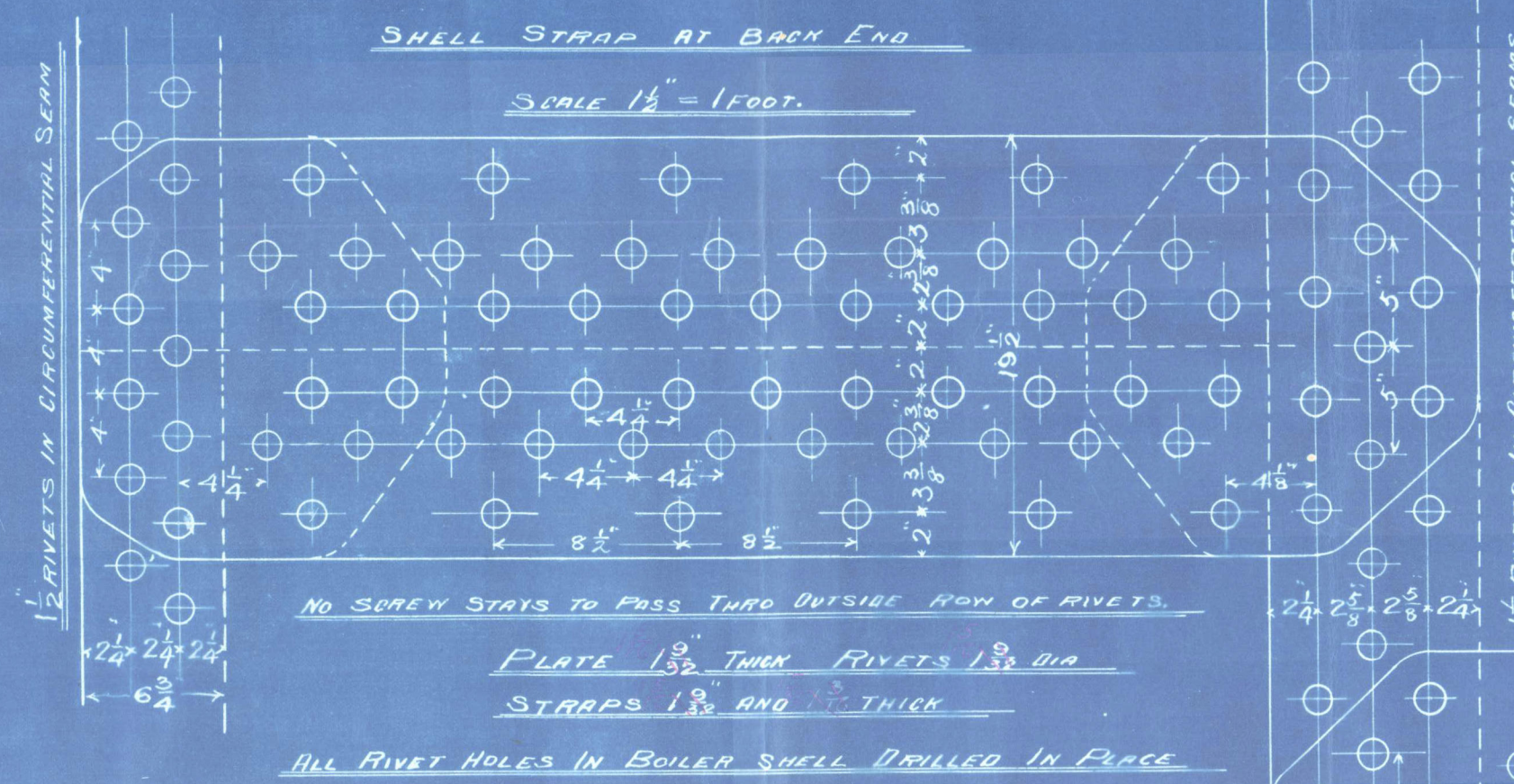


BOILERS N° 1043

TO BE FITTED TO MESSRS DIXON & CO'S SS 444
TO PASS BOARD OF TRADE FOR A WORKING PRESSURE OF 150 LBS PER SQUARE INCH
LLOYDS

SCALE 1" = 1 FOOT.

MANHOLE 13" x 16 1/2"
DETAILS OF MANHOLE COVERING PLATE
SAME AS IN DOUBLE ENDED BOILERS.

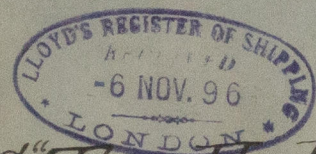


No. of Tracing	5730
No. of Drawing	B 1043
Where Sent	LLOYDS
Examined by	JM. SEAT
Date	Oct 4 th 1896
THOMAS RICHARDSON & SONS, Limited	

Alterations in Rds
11th Nov 1896 J.B.H.



Li R. Union 8072
No. H H H
@ 10243
S.E. 180 lbs



S.S. "Tai-Ho Ku."

W. W. M. Report No. 10,286.

No. 2560
Lloyd's test
360 lbs
RM
25.3.97

Single



© 2020

Lloyd's Register
Foundation

MOB757-0047