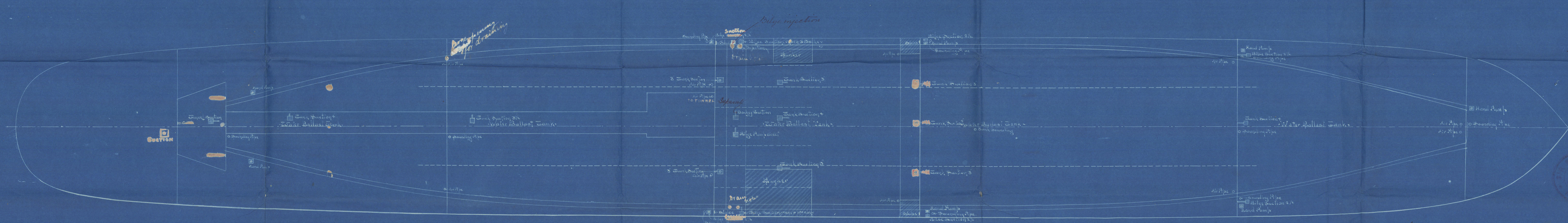
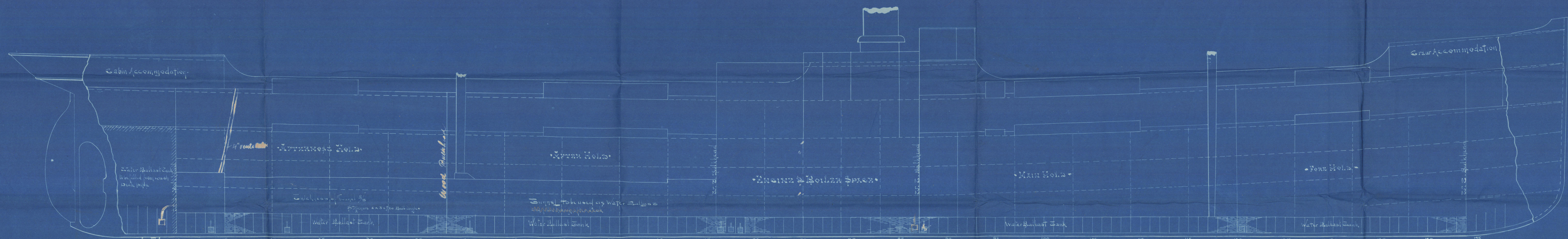


See dem' book  
20.10.91

# PUMPING ARRANGEMENTS

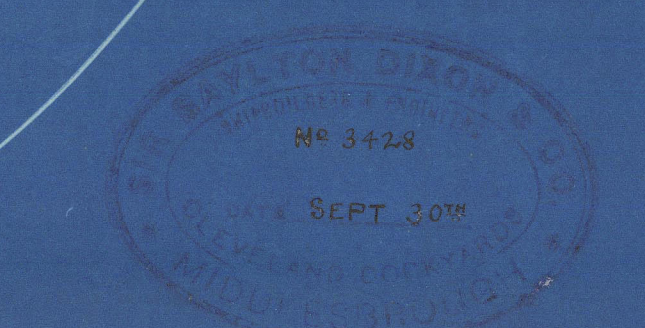
Scale 1/8" = 1' 0"



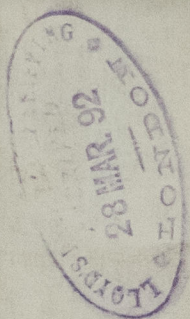
S S N° 360-1-2-3

N.A.  
24.10.91

Sir Raylton Dixon & Co  
IRON & STEEL ENGINEERS  
MIDDLERHONGH, ONTARIO







R. Discont. Co.  
Middlesbrough

LL No 360-1-2-3

no 360. % Kaffer

no 361. % Afrikander report no 643

no 362. % Transvaal

no 363. % Zulu

Pumping Plan

Rept No



J Richardson & Sons  
Engineers  
Hartlepool

MOB 745-0003



© 2021

Lloyd's Register  
Foundation