

MIDSHIP SECTION

OF A STEEL SPAR DE STEAMER.

SCALE 1/2 INCH TO ONE FOOT.

DIMENSIONS.

LENGTH OVER ALL 322.6 DEPTH TO TANK TOP 25.6
 DO B.P. 308.1 DO MOULDED 28.0
 BREADTH EXTREME 40.6 CLASS AT LLOYDS 100 A.1.

SPAR DECK RULE.

EQUIPMENT.

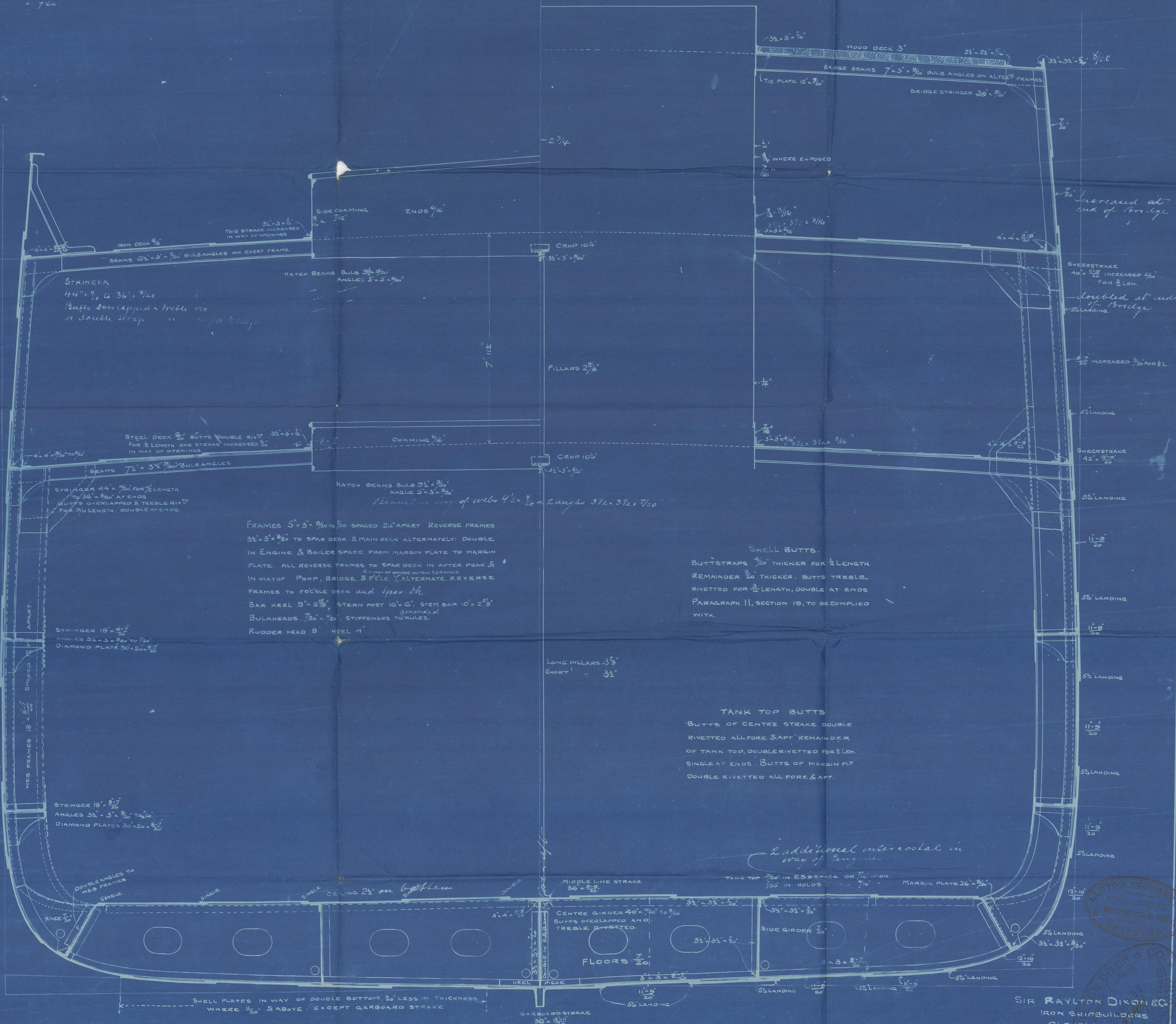
2 BOWER ANCHORS EX STOCK = 36 1/2 CWT.
 1 DO DO DO = 31 "
 1 STREAM DO DO = 11 1/4 "
 1 KEDGE DO DO = 5 1/2 "
 1 DO DO DO = 2 1/4 "
 300 FATHOMS OF 1 1/8" STUD CHAIN CABLE
 30 DO 1 1/2" STREAM CHAIN OR 1 1/2" STEEL WIRE.
 100 DO 12" HEMP OR 1 1/2" STEEL WIRE.
 50 DO 10" HAWSER
 90 DO 8 1/2" WARP.

NUMERALS
 1 GIRTH 37.46
 1 BREADTH 20.16
 DEPTH 20.83
 78.45
 308.08
 627.60
 2353.600
 2468.3760

PROPORTIONS.

DEPTH TO LENGTH SPAR DE = 10/70
 DO DO MAIN DECK = 14/78
 BREADTH DO = 7/64

EQUIPMENT NO. = 30178-30296.



Nº363

SIR RAYLTON DIXON & CO.
 IRON SHIPBUILDERS
 CLEVELAND DOCKYARD
 MIDDLESBROUGH-TEES

Corrected to Lloyd's
 21/1/11

MDB744-0192

Sir Raylton Dixon & Co:

S.S. N° 363

Open Decked.

S.S. "Zulu".

Midship Section.

N° 360 s/s "Raffin"	Report N°	
N° 361 s/s "Afrikaner"	"	62/3
N° 362 s/s "Transvaal"	"	
N° 363 s/s " <u>Zulu</u> "	"	404



MDB744 0192

